

## Single Pack PL20F 220-240V 50Hz RSIR

Single pack code number: **195B4079**

Position	Title	Code	Amount
1	Compressor PL20F	101G0100	1
2	PTC starting device (220V, 250hm, 6.3mm)	103N0011	1
3	Protection screen for PTC	103N0476	1
4	Cord relief	103N1010	1
5	Cover	103N0491	1
6	Bolt joint for one compressor   M6   ø16mm	118-1917	1

**Secop GmbH** • Lise-Meitner-Straße 29 • 24941 Flensburg, Germany • Tel: +49 461 4941 0 • [www.secop.com](http://www.secop.com)

Secop accepts no responsibility for possible errors in catalogs, brochures, and other printed material. Secop reserves the right to alter its products without notice. This also applies to products already on order provided that such alterations can be made without subsequent changes being necessary to specifications already agreed. All trademarks in this material are the property of the respective companies. Secop and the Secop logotype are trademarks of Secop GmbH. All rights reserved.

## PL20F Standard Compressor R134a 220-240V 50Hz

### General

Code number	101G0100
Approvals	EN 60335-2-34 with Annex AA
Compressors on pallet	150

### Application

Application	MBP		
Frequency	Hz	50	60
Evaporating temperature	°C	-25 to 0	–
Voltage range	V	198 - 254	–
Max. condensing temperature continuous (short)	°C	60 (70)	–
Max. winding temperature continuous (short)	°C	125 (135)	–

### Cooling requirements

Frequency	Hz	50			60		
Application		LBP	MBP	HBP	LBP	MBP	HBP
32°C		–	S	–	–	–	–
38°C		–	S	–	–	–	–
43°C		–	–	–	–	–	–
Remarks on application:							

### Motor

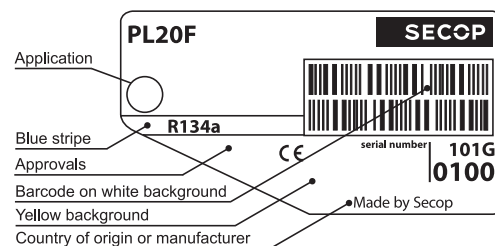
Motor type	RSIR		
LRA (rated after 4 sec. UL984), HST   LST	A	–	1.2
Cut in Current, HST   LST	A	–	5.7
Resistance, main   start winding (25°C)	Ω	84.0	19.0

### Design

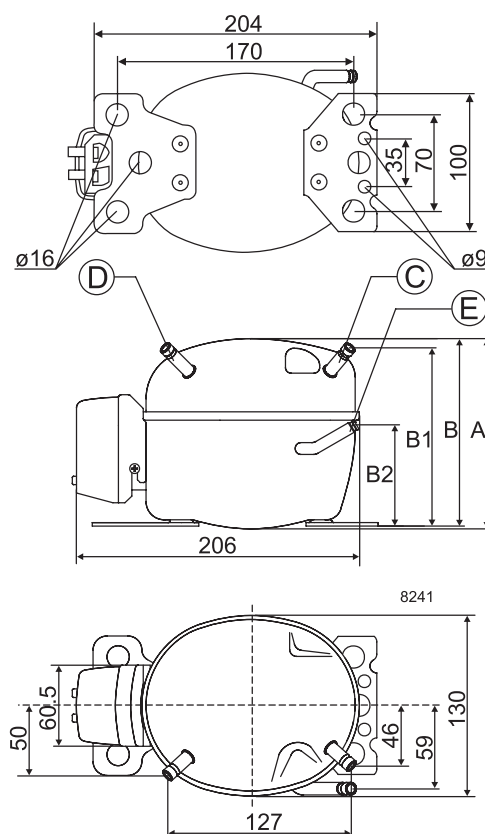
Displacement	cm³	1.41
Oil quantity (type)	cm³	150 (polyolester)
Maximum refrigerant charge	g	300
Free gas volume in compressor	cm³	800
Weight without electrical equipment	kg	3.8

### Dimensions

Height	mm	A	129
		B	127
		B1	128
		B2	73
Suction connector	location/I.D. mm   angle	C	6.2   40°
	material   comment	Cu-plated steel   Al cap	
Process connector	location/I.D. mm   angle	D	6.2   45°
	material   comment	Cu-plated steel   Al cap	
Discharge connector	location/I.D. mm   angle	E	5.0   21°
	material   comment	Cu-plated steel   Al cap	
Oil cooler connector	location/I.D. mm   angle	F	–
	material   comment	–	
Connector tolerance	I.D. mm	±0.09, on 5.0 +0.12/+0.20	
Remarks:			



- S = Static cooling normally sufficient
- O = Oil cooling
- F<sub>1</sub> = Fan cooling 1.5 m/s (compressor compartment temperature equal to ambient temperature)
- F<sub>2</sub> = Fan cooling 3.0 m/s necessary
- SG = Suction gas cooling normally sufficient
- = not applicable in this area



**EN 12900 Household (CECOMAF)**

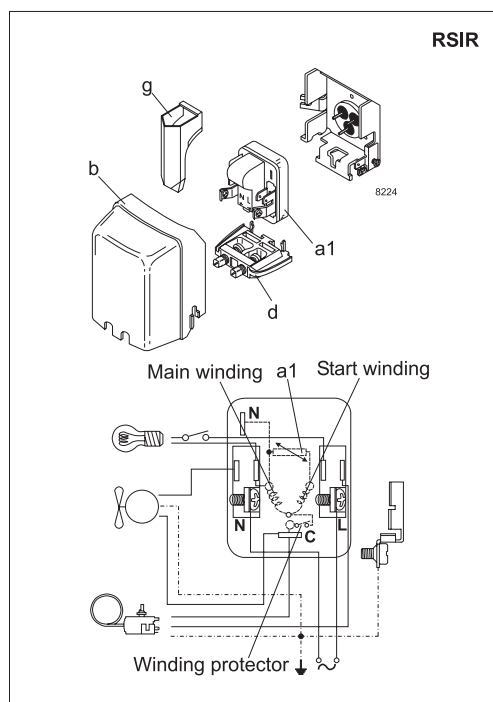
220V, 50Hz, static cooling, PTC consumption incl.

Evap. temp. in °C	-45	-40	-35	-30	-25	-23.3	-20	-15	-10	-6.7	-5	0	5	7.2	10	15	20
Capacity in W					16.0	19.0	25.4	36.5	49.6	59.0	64.9	82.6					
Power cons. in W					42.0	43.4	46.4	51.5	57.2	61.0	63.3	69.7					
Current cons. in A					0.35	0.35	0.36	0.37	0.39	0.40	0.41	0.43					
COP in W/W					0.38	0.44	0.55	0.71	0.87	0.97	1.03	1.19					

**ASHRAE LBP**

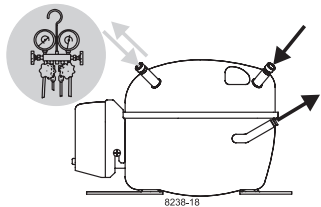
220V, 50Hz, static cooling, PTC consumption incl.

Evap. temp. in °C	-45	-40	-35	-30	-25	-23.3	-20	-15	-10	-6.7	-5	0	5	7.2	10	15	20
Capacity in W					19.7	23.4	31.3	45	61.3	74.0	80.3	102					
Power cons. in W					42.0	43.4	46.4	51.5	57.2	61.0	63.3	69.7					
Current cons. in A					0.35	0.35	0.36	0.37	0.39	0.40	0.41	0.43					
COP in W/W					0.47	0.54	0.67	0.87	1.07	1.21	1.27	1.47					



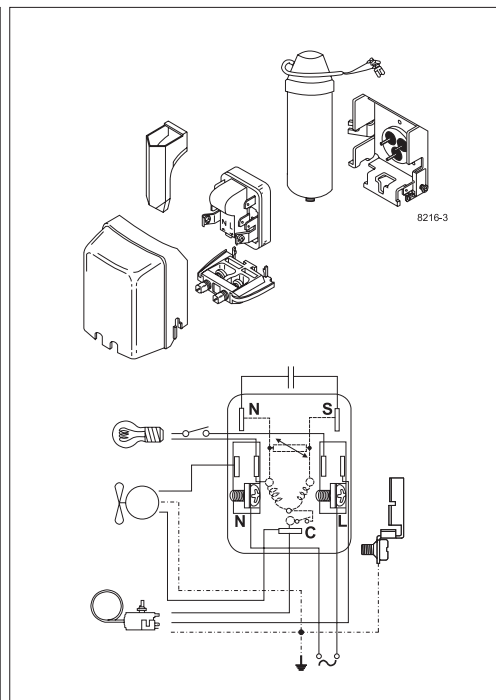
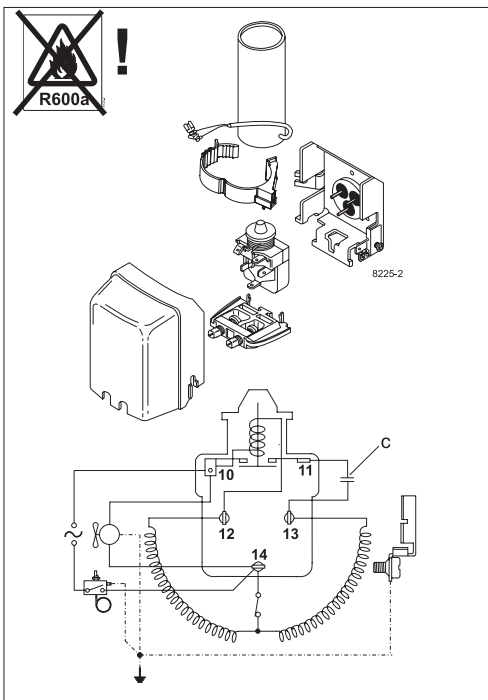
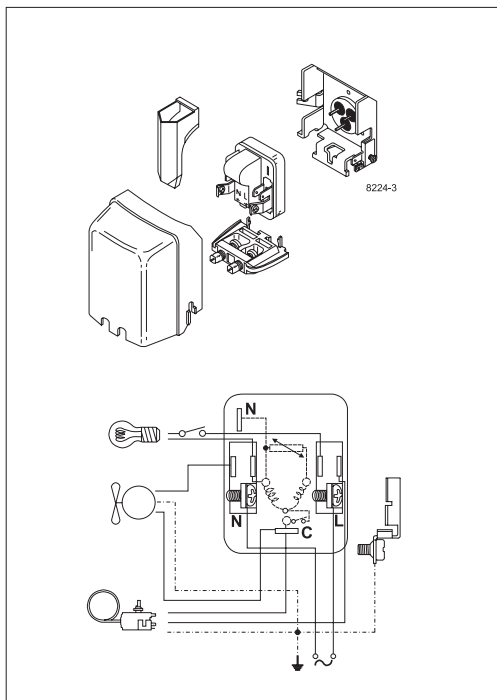
Accessories for PL20F		Figure	Code number	Test conditions	EN 12900/ CECOMAF	ASHRAE												
PTC starting device	6.3 mm spade connectors	a1	103N0011	Condensing temperature	55°C	54.4°C												
	4.8 mm spade connectors		103N0018	Ambient temperature	32°C	32°C												
Starting relay	6.3 mm spade connectors	a2	–	Suction gas temperature	32°C	32°C												
Start. capacitor 60 µF	6.3 mm spade connectors	c	–	Liquid temperature	no subcooling	32°C												
Cover		b	103N0491	<table><tr><th colspan="2">Mounting accessories</th><th>Code number</th></tr><tr><td>Bolt joint for one comp.</td><td>Ø: 16 mm</td><td>118-1917</td></tr><tr><td>Bolt joint in quantities</td><td>Ø: 16 mm</td><td>118-1918</td></tr><tr><td>Snap-on in quantities</td><td>Ø: 16 mm</td><td>118-1919</td></tr></table>			Mounting accessories		Code number	Bolt joint for one comp.	Ø: 16 mm	118-1917	Bolt joint in quantities	Ø: 16 mm	118-1918	Snap-on in quantities	Ø: 16 mm	118-1919
Mounting accessories		Code number																
Bolt joint for one comp.	Ø: 16 mm	118-1917																
Bolt joint in quantities	Ø: 16 mm	118-1918																
Snap-on in quantities	Ø: 16 mm	118-1919																
Cord relief		d	103N1010															
Protection screen for PTC		g	103N0476															

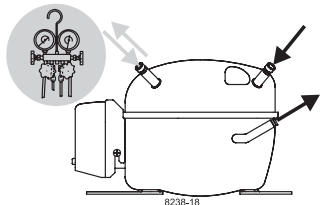
Secop accepts no responsibility for possible errors in catalogs, brochures, and other printed material. Secop reserves the right to alter its products without notice. This also applies to products already on order provided that such alterations can be made without subsequential changes being necessary to specifications already agreed. All trademarks in this material are the property of the respective companies. Secop and the Secop logotype are trademarks of Secop GmbH. All rights reserved. [www.secop.com](http://www.secop.com)



# PL Compressors

**SECOP**

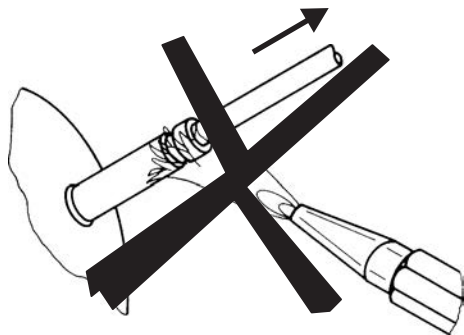




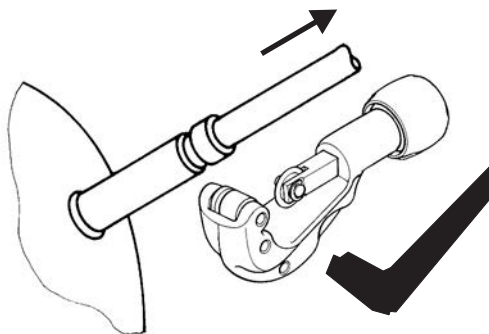
# PL Compressors

## Service/Repair – R600a

**SECO**P



8545



Secop accepts no responsibility for possible errors in catalogs, brochures, and other printed material. Secop reserves the right to alter its products without notice. This also applies to products already on order provided that such alterations can be made without subsequential changes being necessary to specifications already agreed. All trademarks in this material are the property of the respective companies. Secop and the Secop logotype are trademarks of Secop GmbH. All rights reserved. [www.secop.com](http://www.secop.com)