

## Model

Designation	<b>GS26GHX</b>	220-240V/50Hz 1~	Sales code:	<b>107B0702</b>
-------------	----------------	------------------	-------------	-----------------

## Compressor design

Oil type	Polyolester	Refrigerant(s)	<b>R134a, R513A</b>
Oil viscosity	32,5cSt	Displacement	26,3cm <sup>3</sup> / 1,6cu.in
Oil quantity	902cm <sup>3</sup> / 30,5fl.oz	Compressors on pallet	48
Refr. charge - tech. limit	2000g / 70,5oz		
Free gas volume comp.	3350cm <sup>3</sup> / 113,3fl.oz		
Weight	19,1kg / 42,1lbs		
Motor protection	1# internal		
Winding resistance main	2,5Ω (at 25°C)		
Winding resistance aux	6,7Ω (at 25°C)		
Max. winding temp.			
Max. discharge temp.	130°C / 266°F		



## General - Configurations with GS26GHX

	<b>Conf. 1</b>	<b>Conf. 2</b>
Motorconfiguration	CSCR	CSCR
Power supply (nominal)	220-240V/50Hz	220-240V/50Hz
Number of phases	1	1
Voltage range	198-254V	198-254V
Approvals	VDE	VDE
Starting torque	HST	HST
Note	Cover, clamp, gasket: pre-assembled to compressor.	

## Applications with GS26GHX

	<b>Conf. 1</b>	<b>Conf. 2</b>
Refrigerant	R134a	R513A
Application	MBP+HBP	MBP+HBP
System cooling	fan 3m/s	fan 3m/s
Hot gas defrost	OK	OK
Long interval pull down	OK	OK

## Electrical data - Configurations with GS26GHX

	<b>Conf. 1</b>	<b>Conf. 2</b>
Starting device type	relay	relay
Run capacitor	20μF	20μF
Start capacitor	80μF	80μF
LRA (locked rotor amps / 4s/ U(N))	40A	40A
RLA (rated load amps / 1s/ U(N))	5,6A	5,6A
Cut in current (U(N))	40A	40A

## Model

Designation

**GS26GHX**

220-240V/50Hz 1~

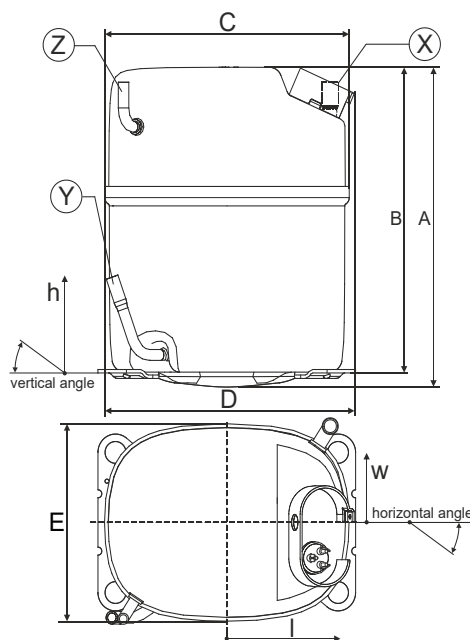
Sales code:

**107B0702**

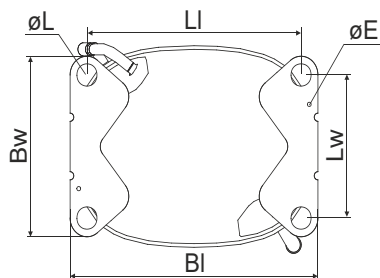
## Compressor dimensions

Housing	A Height	259mm / 10,2in
	B Height	247mm / 9,72in
	C Length shell	224mm / 8,82in
	D Length w. cover	232mm / 9,13in
	E Width	173mm / 6,81in

Connectors		Suction	Discharge	Process
		X	Y	Z
Diameter	[mm]	øi 12,75-13,05	øi 8,15-8,25	øi 6,4-6,6
	(i:inside, o:outside) [in]	øi 0,5-0,51	øi 0,32-0,32	øi 0,25-0,26
Material		copper	copper	copper
Horizontal angle	±2°	0°	0°	0°
Vertical angle	±2°	90°	71°	90°
Position l/h/w	[mm]	-95/234/-84	-105/84/-84	95/234/84
	[in]	-3,7/9,2/-3,3	-4,1/3,3/-3,3	3,7/9,2/3,3
Straight tube l.	[mm]	18	23	15
	[in]	0,7	0,9	0,6

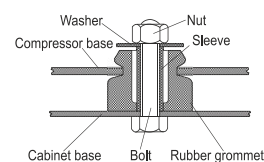


## Compressor fixation



Baseplate	[mm]	[inch]
BI	235	9.25
Bw	154	6.06
øE	ø 3.6	ø 0.14
Large holes	[mm]	[inch]
LI	203	7.99
Lw	122	4.80
øL	ø 19	ø 0.75

## Bolt joint



## Mounting accessories

Bolt joint | M8 | ø19mm

one comp.

107B9150

## Application notes

Provision for PE Grounding is located at the PE Stamp on the compressor

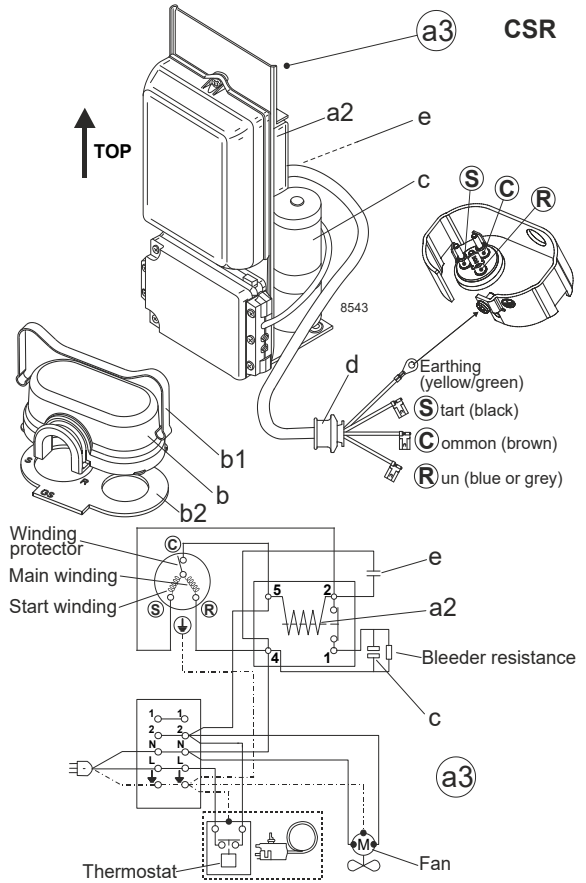
## Model

Designation	<b>GS26GHX</b>	<b>220-240V/50Hz</b>	<b>Conf. 1</b>	Sales code:	<b>107B0702</b>
-------------	----------------	----------------------	----------------	-------------	-----------------

## Configuration

Motor configuration	CSCR
Power supply (nominal)	220-240V/50Hz 1~
Refrigerant	R134a
Application	MBP+HBP
Voltage range	198-254V
Starting torque	HST
Approvals	VDE

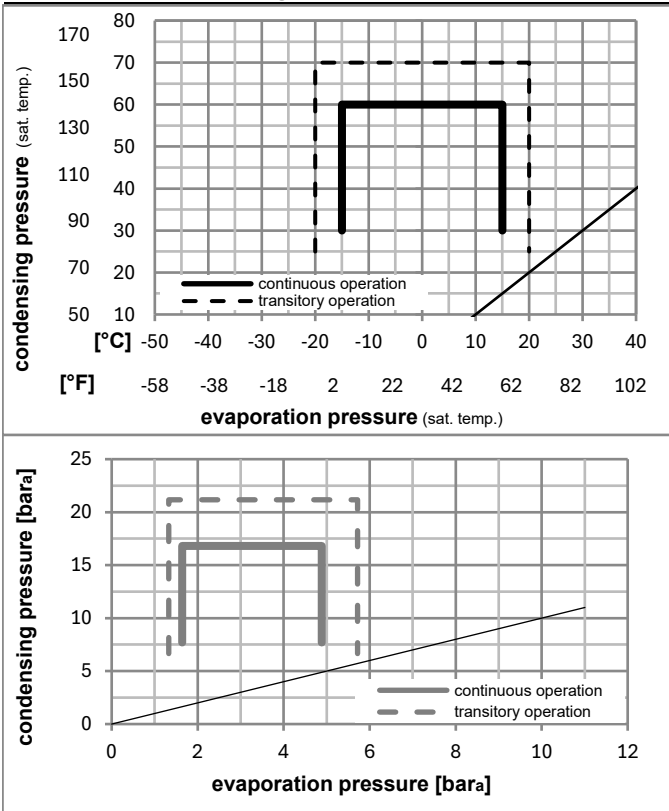
## Electrical accessories / wiring diagram



## Ambient/ machine room temperatures minimum /maximum

Ambient temperature range:	10 - 43°C / 50 - 110°F
Machine room temperature range:	10 - 48°C / 50 - 119°F
Compressor cooling:	fan 3m/s

## Operation pressure range



## Components (cover, clamp, gasket: incl. and pre assembl.)

a3	GS starter kit (600mm)	117-7070
b	cover	107B9101
b2	gasket	107B9100
b1	clamp	107B9104

## Model

Designation **GS26GHX** **220-240V/50Hz** Conf. 1 Sales code: **107B0702**

## Optimization + standard conditions

R134a, 220V/50Hz, CSCR, fan 3m/s, VDE

		Evaporating pressure (saturation temperature)				Condensing pressure (saturation temperature)			Return gas temp.		Liquid temp.		Cooling capacity			COP	EER	Power consumption		
		pe	pc	RGT	Tliq	[W]	[Btu/h]	[kcal/h]	[W/W]	[Btu/Wh]	[kcal/Wh]	P1	I	Ref. mass flow						
[°C]	[°F]											[W]	[A]	[kg/h]						
[°C]	[°F]	7	54	35	46	2611,8	8920	2247,8	2,50	8,53	2,15	1046,1	4,91	57,94		ASHRAE HBP				
[°C]	[°F]	45	130	95	115															
[°C]	[°F]	5	55	32	55	2151,8	7349	1851,8	2,13	7,27	1,83	1010,8	4,75	53,02		cecomaf HBP				
[°C]	[°F]	41	131	90	131															
[°C]	[°F]	5	50	20	50	2234,8	7632	1923,3	2,30	7,87	1,98	969,7	4,56	56,31		EN12900 HBP				
[°C]	[°F]	41	122	68	122															
[°C]	[°F]	-7	54	35	46	1446,7	4941	1245,1	1,79	6,11	1,54	808,7	3,84	31,56		ASHRAE MBP				
[°C]	[°F]	20	130	95	115															
[°C]	[°F]	-10	55	32	55	1119,2	3822	963,2	1,48	5,05	1,27	756,5	3,62	27,06		cecomaf MBP				
[°C]	[°F]	14	131	90	131															
[°C]	[°F]	-10	45	20	45	1273,3	4349	1095,8	1,78	6,07	1,53	716,7	3,42	29,80		EN12900 MBP				
[°C]	[°F]	14	113	68	113															

## Performance tables

R134a, 220V/50Hz, CSCR, fan 3m/s, VDE

	pe		Cooling capacity			COP	EER	P1	I	m	
	[°C]	[°F]	[W]	[Btu/h]	[kcal/h]	[W/W]	[Btu/Wh]	[kcal/Wh]	[W]	[A]	[kg/h]
[°C / °F]	-15	5	1039,9	3552	895,0	1,60	5,46	1,38	650,0	3,15	22,67
cond. pressure	-10	14	1321,0	4511	1136,9	1,84	6,29	1,59	716,7	3,42	28,91
pc= 45/113	-5	23	1656,9	5659	1426,0	2,11	7,21	1,82	784,7	3,72	36,44
return gas temp.	0	32	2055,5	7020	1769,0	2,40	8,21	2,07	855,4	4,04	45,46
RGT= 32/90	5	41	2524,4	8621	2172,6	2,71	9,27	2,34	930,1	4,38	56,20
liquid temp	10	50	3071,5	10490	2643,4	3,04	10,38	2,62	1010,2	4,75	68,92
Tliq= 45/113	15	59	3704,4	12651	3188,0	3,38	11,53	2,91	1097,2	5,14	83,91
[°C / °F]	-15	5	877,4	2996	755,1	1,30	4,44	1,12	674,6	3,29	21,12
cond. pressure	-10	14	1119,2	3822	963,2	1,48	5,05	1,27	756,5	3,62	27,06
pc= 55/131	-5	23	1407,0	4805	1210,9	1,68	5,73	1,44	838,9	3,97	34,20
return gas temp	0	32	1748,6	5972	1504,9	1,89	6,47	1,63	923,2	4,35	42,77
RGT= 32/90	5	41	2151,8	7349	1851,8	2,13	7,27	1,83	1010,8	4,75	53,02
liquid temp	10	50	2624,1	8962	2258,3	2,38	8,12	2,05	1103,1	5,18	65,23
Tliq= 55/131	15	59	3173,5	10838	2731,1	2,64	9,02	2,27	1201,5	5,62	79,71

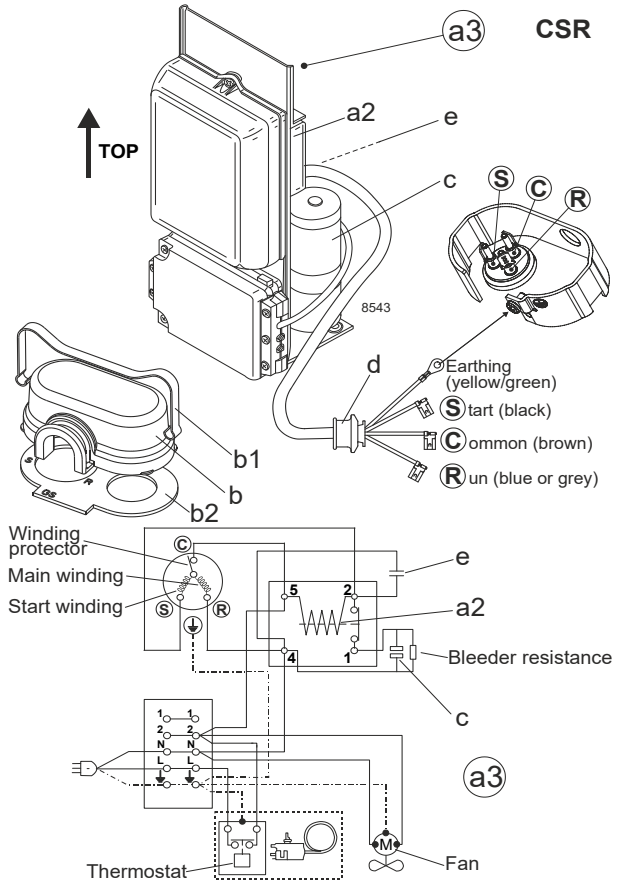
## Model

Designation	<b>GS26GHX</b>	<b>220-240V/50Hz</b>	<b>Conf. 2</b>	Sales code:	<b>107B0702</b>
-------------	----------------	----------------------	----------------	-------------	-----------------

## Configuration

Motorconfiguration	CSCR
Power supply (nominal)	220-240V/50Hz 1~
Refrigerant	R513A
Application	MBP+HBP
Voltage range	198-254V
Starting torque	HST
Approvals	VDE

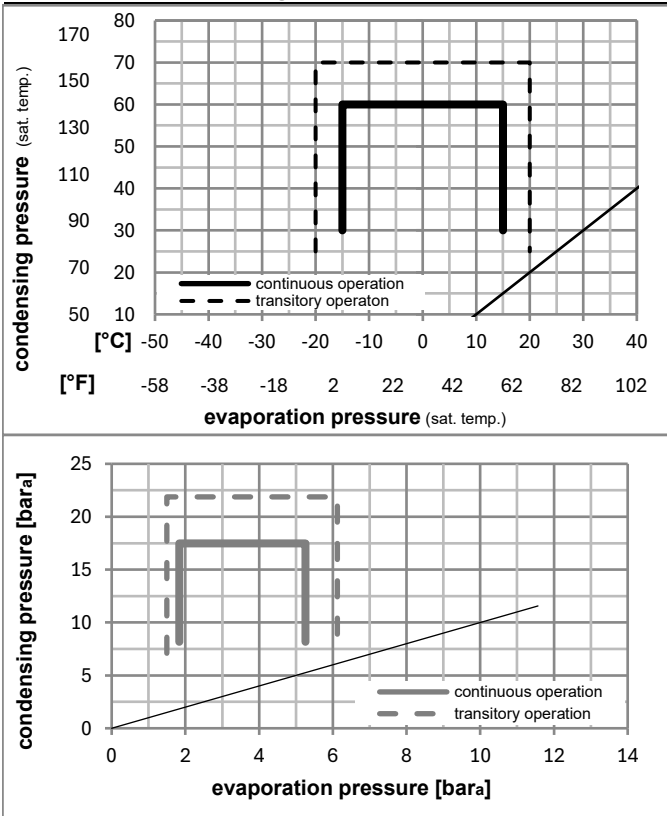
## Electrical accessories / wiring diagram



## Ambient/ machine room temperatures minimum /maximum

Ambient temperature range:	10 - 43°C / 50 - 110°F
Machine room temperature range:	10 - 48°C / 50 - 119°F
Compressor cooling:	fan 3m/s

## Operation pressure range



## Components (cover, clamp, gasket: incl. and pre assembl.)

a3	GS starter kit (600mm)	117-7070
b	cover	107B9101
b2	gasket	107B9100
b1	clamp	107B9104

## Model

Designation **GS26GHX** **220-240V/50Hz** Conf. 2 Sales code: **107B0702**

## Optimization + standard conditions

R513A, 220V/50Hz, CSCR, fan 3m/s, VDE

	Evaporating pressure (saturation temperature)				Cooling capacity	COP	EER	Power consumption			Ref. mass flow							
	pe	pc	RGT	Tliq				P1	I	m								
	[°C]	[°F]	[°C]	[°F]	[W]	[W/W]	[Btu/Wh]	[kcal/Wh]	[W]	[A]	[kg/h]							
	7,2	45	54	130	35	95	46	115	2686,3	9174	2311,8	2,48	8,46	2,13	1084,4	5,96	66,73	ASHRAE HBP
	5	41	55	131	32	90	55	131	2180,4	7447	1876,5	2,08	7,10	1,79	1049,0	5,82	61,28	cecomaf HBP
	5	41	50	122	20	68	50	122	2268,5	7747	1952,3	2,26	7,70	1,94	1005,8	5,63	65,05	EN12900 HBP
	-7	20	54	130	35	95	46	115	1518,7	5187	1307,0	1,79	6,11	1,54	848,5	4,94	37,20	ASHRAE MBP
	-10	14	55	131	32	90	55	131	1160,9	3965	999,1	1,46	4,97	1,25	797,2	4,70	32,10	cecomaf MBP
	-10	14	45	113	20	68	45	113	1330,8	4545	1145,3	1,76	6,01	1,52	755,8	4,51	35,27	EN12900 MBP

## Performance tables

R513A, 220V/50Hz, CSCR, fan 3m/s, VDE

	pe	Cooling capacity			COP	EER	P1	I	m		
		[°C]	[°F]	[W]						[Btu/h]	[kcal/h]
[°C / °F]	-15	5	1105,5	3776	951,4	1,60	5,47	1,38	689,6	4,19	27,09
cond. pressure	-10	14	1391,6	4753	1197,6	1,84	6,29	1,58	755,8	4,51	34,21
pc= 45/113	-5	23	1731,4	5913	1490,1	2,11	7,19	1,81	822,1	4,82	42,74
return gas temp.	0	32	2132,3	7282	1835,1	2,39	8,17	2,06	890,8	5,13	52,89
RGT= 32/90	5	41	2601,7	8885	2239,1	2,70	9,21	2,32	964,4	5,45	64,89
liquid temp	10	50	3147,0	10748	2708,4	3,01	10,28	2,59	1045,3	5,80	79,01
Tliq= 45/113	15	59	3775,6	12894	3249,3	3,32	11,35	2,86	1135,8	6,18	95,53
[°C / °F]	-15	5	919,2	3139	791,0	1,29	4,39	1,11	715,3	4,31	25,32
cond. pressure	-10	14	1160,9	3965	999,1	1,46	4,97	1,25	797,2	4,70	32,10
pc= 55/131	-5	23	1446,8	4941	1245,1	1,65	5,62	1,42	878,5	5,07	40,19
return gas temp	0	32	1784,2	6093	1535,5	1,86	6,34	1,60	961,7	5,44	49,83
RGT= 32/90	5	41	2180,4	7447	1876,5	2,08	7,10	1,79	1049,0	5,82	61,28
liquid temp	10	50	2642,9	9026	2274,5	2,31	7,90	1,99	1142,9	6,21	74,82
Tliq= 55/131	15	59	3179,2	10857	2736,0	2,55	8,71	2,20	1245,8	6,63	90,79