

## Model

Designation	<b>KLE6.6GFHX</b>	115-127V/60Hz 1~	Sales code:	<b>106G6703</b>
-------------	-------------------	------------------	-------------	-----------------

## Compressor design

Oil type	Polyolester	Refrigerant(s)	<b>R134a, R513A</b>
Oil viscosity	19,2cSt	Displacement	6,6cm <sup>3</sup> / 0,4cu.in
Oil quantity	200cm <sup>3</sup> / 6,8fl.oz	Compressors on pallet	100
Refr. charge - tech. limit	300g / 10,6oz		
Free gas volume comp.	1580cm <sup>3</sup> / 53,4fl.oz		
Weight	9,5kg / 20,9lbs		
Motor protection	external		
Winding resistance main	2Ω (at 25°C)		
Winding resistance aux	5,3Ω (at 25°C)		
Max. winding temp.	125°C / 257°F		
Max. discharge temp.	130°C / 266°F		
Additional note	Good robustness against liquid intake. Ice-cube maker optimization - indirect suction intake.		



## General - Configurations with KLE6.6GFHX

	<b>Conf. 1</b>
Motorconfiguration	CSIR
Power supply (nominal)	115-127V/60Hz
Number of phases	1
Voltage range	95-140V
Approvals	UL
Starting torque	HST
Note	Recommended voltage range for HBP is 103-140V/60Hz

## Applications with KLE6.6GFHX

	<b>Conf. 1</b>
Refrigerant	R134a
Application	LBP+MBP+HBP
System cooling	fan 3m/s
Hot gas defrost	OK
Long interval pull down	OK

## Electrical data - Configurations with KLE6.6GFHX

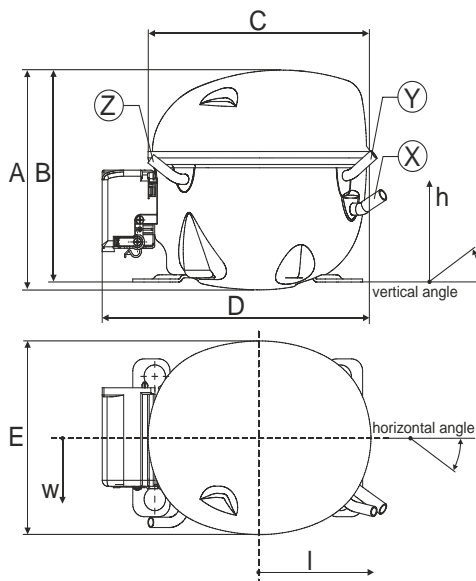
	<b>Conf. 1</b>
Starting device type	relay
Run capacitor	-/-
Start capacitor	240μF
LRA (locked rotor amps / 4s/ U(N))	31,1A
RLA (rated load amps / 1s/ U(N))	4,3A
Cut in current (U(N))	27,8A

## Model

Designation **KLE6.6GFHX** 115-127V/60Hz 1~ Sales code: **106G6703**

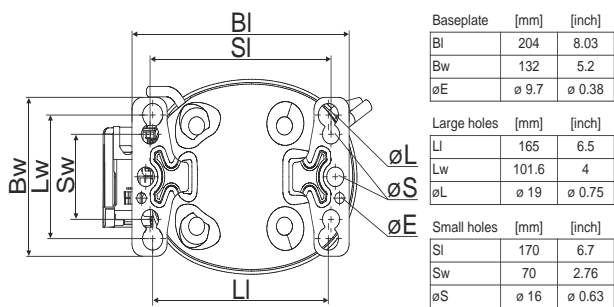
## Compressor dimensions

<b>Housing</b>	A Height	182mm / 7,17in
	B Height	175mm / 6,89in
	C Length shell	198mm / 7,8in
	D Length w. cover	238mm / 9,37in
	E Width	160mm / 6,3in

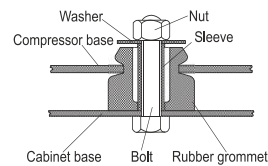


<b>Connectors</b>		<b>Suction</b>	<b>Discharge</b>	<b>Process</b>
		<b>X</b>	<b>Y</b>	<b>Z</b>
Diameter	[mm]	øi 8,11-8,29	øi 6,41-6,59	øi 6,41-6,59
(i:inside, o:outside)	[in]	øi 0,32-0,33	øi 0,25-0,26	øi 0,25-0,26
Material		copper	copper	copper
Horizontal angle	±2°	35°	13°	0°
Vertical angle	±2°	30°	40°	145°
Position l/h/w	[mm]	119/73/59	117/107/66	-88/101/71
	[in]	4,7/2,9/2,3	4,6/4,2/2,6	-3,5/4/2,8
Straight tube l.	[mm]	14	14	14
	[in]	0,5	0,5	0,5

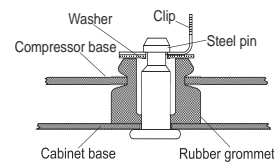
## Compressor fixation



### Bolt joint



### Snap-on



<b>Mounting accessories</b>	one comp.	multi pack
Bolt joint   M6   ø16mm	118-1917	118-1918
Bolt joint   ø1/4"   ø16mm	118-1946	
Bolt joint   ø1/4"   ø19mm	118-1949	
Snap-on   ø7,3   ø16mm	118-1947	118-1919

## Application notes

Provision for PE Grounding is located at the PE Stamp on the compressor

Suctiongas connector and Process connector can be switched (minor loss of cooling capacity)

## Model

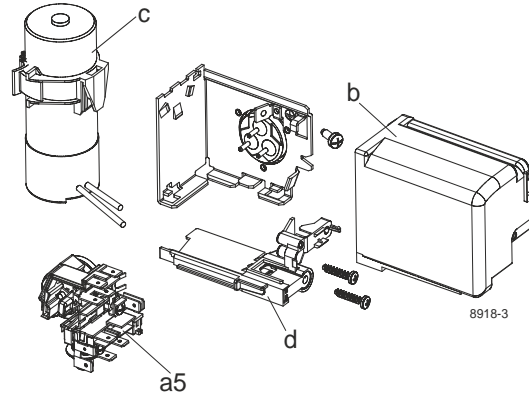
Designation	<b>KLE6.6GFHX</b>	<b>115-127V/60Hz</b>	Conf. 1	Sales code:	<b>106G6703</b>
-------------	-------------------	----------------------	---------	-------------	-----------------

## Configuration

Motorconfiguration	CSIR
Power supply (nominal)	115-127V/60Hz 1~
Refrigerant	R134a
Application	LBP+MBP+HBP
Voltage range	95-140V
Starting torque	HST
Approvals	UL

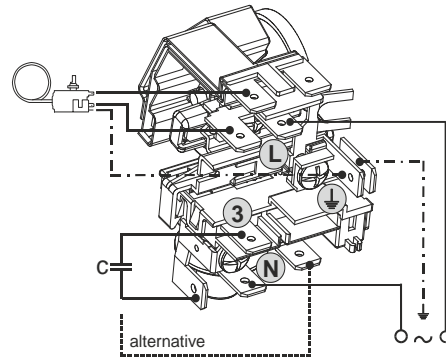
## Electrical accessories / wiring diagram

**CSIR**

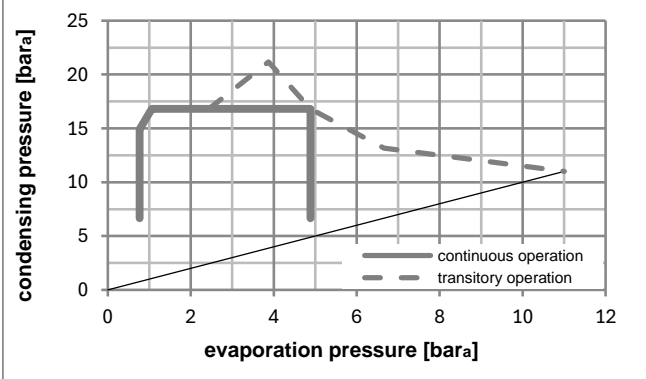
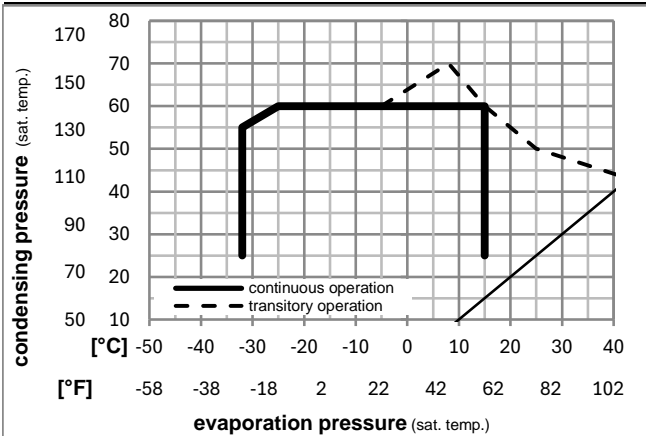


## Ambient/ machine room temperatures minimum /maximum

Ambient temperature range:	10 - 43°C / 50 - 110°F
Machine room temperature range:	10 - 48°C / 50 - 119°F
Compressor cooling:	fan 3m/s



## Operation pressure range



## Components

a5	current relay (T1246/L6)	117U7080
c	start capacitor (240µF)	117U5002
b, d	cover + clamp + screws(5VA-compl.)	103N0600

## Alternative components

b, d	100x cover + clamp + screws(5VA)	103N2060
b, d	cover + clamp + screws(5VA) in bag	103N1060

### Model

Designation **KLE6.6GFHX 115-127V/60Hz** Conf. 1 Sales code: **106G6703**

### Optimization + standard conditions

R134a, 120V/60Hz, CSIR, fan 3m/s, UL

	pe	pc	RGT	Tliq	Cooling capacity		COP	EER		P1	I	Ref. mass flow	
	[°C]	[°C]	[°C]	[°C]	[W]	[Btu/h]	[W/W]	[Btu/Wh]	[kcal/Wh]	[W]	[A]	[kg/h]	
Evaporating pressure (saturation temperature)	-23	54	32	32	234,4	801	1,34	4,57	1,15	175,1	2,59	4,55	ASHRAE LBP
Condensing pressure (saturation temperature)	-10	130	90	90									
Return gas temp.													
Liquid temp.													
	[°F]	[°F]	[°F]	[°F]									
	-7	54	35	46	482,6	1648	1,87	6,38	1,61	258,4	3,15	10,53	ASHRAE MBP
	20	130	95	115									
	[°C]	[°C]	[°C]	[°C]									
	7,2	54	35	46	853,7	2916	2,57	8,79	2,21	331,7	3,73	18,94	ASHRAE HBP
	45	130	95	115									
	[°F]	[°F]	[°F]	[°F]									
	-35	40	20	40	117,8	402	0,96	3,26	0,82	123,3	2,33	2,58	EN12900 LBP
	-31	104	68	104									
	[°C]	[°C]	[°C]	[°C]									
	-10	45	20	45	417,9	1427	1,85	6,32	1,59	225,8	2,91	9,78	EN12900 MBP
	14	113	68	113									
	[°F]	[°F]	[°F]	[°F]									
	5	50	20	50	727,1	2483	2,37	8,11	2,04	306,4	3,52	18,32	EN12900 HBP
	41	122	68	122									
	[°F]	[°F]	[°F]	[°F]									

### Performance tables

R134a, 120V/60Hz, CSIR, fan 3m/s, UL

	pe	Cooling capacity			COP	EER			P1	I	m
	[°C]	[°F]	[W]	[Btu/h]	[kcal/h]	[W/W]	[Btu/Wh]	[kcal/Wh]	[W]	[A]	[kg/h]
[°C / °F]	-23	-10	223,5	763	192,3	1,30	4,43	1,12	172,2	2,57	4,85
cond. pressure	-23	-10	223,5	763	192,3	1,30	4,43	1,12	172,2	2,57	4,85
pc= 45/113	-15	5	342,8	1171	295,0	1,67	5,69	1,43	205,7	2,77	7,47
return gas temp.	-9	15	444,7	1519	382,7	1,95	6,66	1,68	228,1	2,93	9,74
RGT= 32/90	0	32	667,5	2279	574,4	2,49	8,50	2,14	268,0	3,23	14,76
liquid temp	7,2	45	886,8	3029	763,2	2,94	10,05	2,53	301,3	3,48	19,81
Tliq= 45/113	15	59	1177,7	4022	1013,5	3,45	11,79	2,97	341,2	3,79	26,68
[°C / °F]	-23	-10	189,5	647	163,1	1,08	3,70	0,93	175,1	2,59	4,54
cond. pressure	-23	-10	189,5	647	163,1	1,08	3,70	0,93	175,1	2,59	4,54
pc= 55/131	-15	5	295,7	1010	254,5	1,36	4,65	1,17	217,3	2,86	7,12
return gas temp	-9	15	384,9	1315	331,3	1,57	5,36	1,35	245,3	3,05	9,31
RGT= 32/90	0	32	578,8	1977	498,1	1,97	6,72	1,69	294,0	3,42	14,16
liquid temp	7,2	45	769,8	2629	662,5	2,31	7,88	1,99	333,5	3,74	19,04
Tliq= 55/131	15	59	1024,2	3498	881,4	2,70	9,21	2,32	379,6	4,11	25,73