

## Model

Designation	<b>KLF5.6CNDS</b>	<b>220-240V/50Hz 1~</b>	Sales code:	<b>106h2603</b>
-------------	-------------------	-------------------------	-------------	-----------------

## Compressor design

Oil type	Polyolester	Refrigerant(s)	<b>R290</b>
Oil viscosity	10,4cSt	Displacement	5,6cm <sup>3</sup> / 0,34cu.in
Oil quantity	170cm <sup>3</sup> / 5,7fl.oz	Compressors on pallet	100
Refr. charge - tech. limit	200g / 7,1oz		
Free gas volume comp.	1605cm <sup>3</sup> / 54,3fl.oz		
Weight	9,4kg / 20,7lbs		
Motor protection	external		
Winding resistance main	10,7Ω (at 25°C)		
Winding resistance aux	17Ω (at 25°C)		
Max. winding temp.	125°C / 257°F		
Max. discharge temp.	130°C / 266°F		
Additional note	Very good robustness against liquid intake. Ice-cube maker optimization - indirect suction intake.		



## General - Configurations with KLF5.6CNDS

	<b>Conf. 1</b>
Motorconfiguration	CSIR
Power supply (nominal)	220-240V/50Hz
Number of phases	1
Voltage range	198-254V
Approvals	VDE, CCC
Starting torque	HST
Note	- / -

## Applications with KLF5.6CNDS

	<b>Conf. 1</b>
Refrigerant	R290
Application	LBP+MBP
System cooling	fan 3m/s
Hot gas defrost	OK
Long interval pull down	OK

## Electrical data - Configurations with KLF5.6CNDS

	<b>Conf. 1</b>
Starting device type	relay
Run capacitor	-/-
Start capacitor	80μF
LRA (locked rotor amps / 4s/ U(N))	11,4A
RLA (rated load amps / 1s/ U(N))	1,6A
Cut in current (U(N))	10,7A

## Model

Designation

**KLF5.6CNDS**

220-240V/50Hz 1~

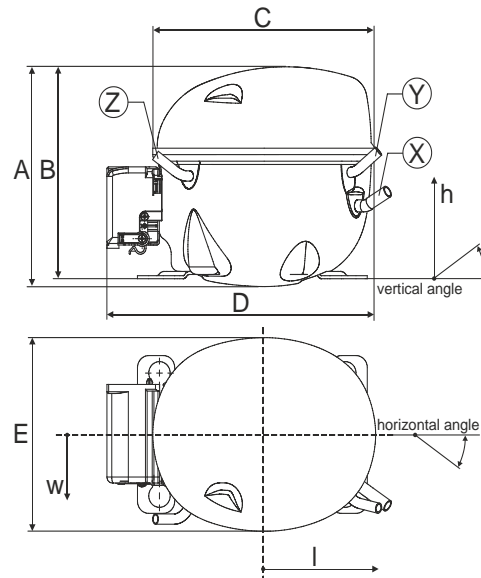
Sales code:

**106h2603**

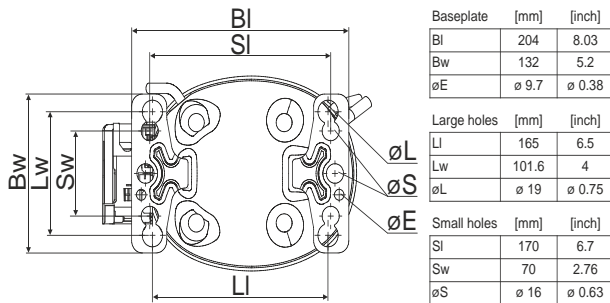
## Compressor dimensions

Housing	A Height	182mm / 7,17in
	B Height	175mm / 6,89in
	C Length shell	198mm / 7,8in
	D Length w. cover	238mm / 9,37in
	E Width	160mm / 6,3in

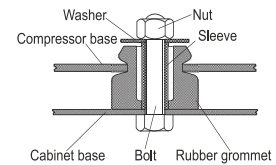
Connectors		Suction	Discharge	Process
		X	Y	Z
Diameter	[mm]	øi 8,11-8,29	øi 6,11-6,29	øi 6,11-6,29
(i:inside, o:outside)	[in]	øi 0,32-0,33	øi 0,24-0,25	øi 0,24-0,25
Material		copper	copper	copper
Horizontal angle	±2°	35°	13°	0°
Vertical angle	±2°	30°	40°	145°
Position l/h/w	[mm]	119/73/59	117/107/66	-88/101/71
	[in]	4,7/2,9/2,3	4,6/4,2/2,6	-3,5/4/2,8
Straight tube l.	[mm]	14	14	14
	[in]	0,5	0,5	0,5



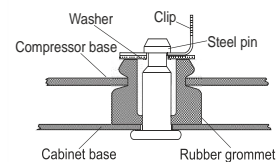
## Compressor fixation



### Bolt joint



### Snap-on



Mounting accessories	one comp.	multi pack
Bolt joint   M6   ø16mm	118-1917	118-1918
Bolt joint   ø1/4"   ø16mm	118-1946	
Bolt joint   ø1/4"   ø19mm	118-1949	
Snap-on   ø7,3   ø16mm	118-1947	118-1919

## Application notes

Provision for PE Grounding is located at the PE Stamp on the compressor

## Model

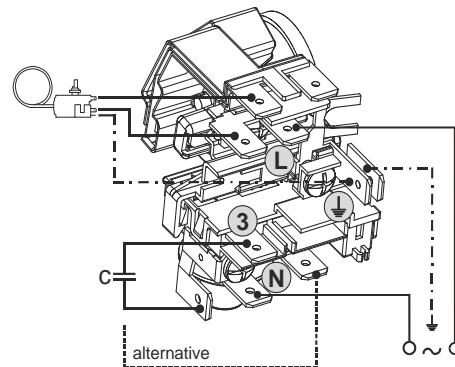
Designation **KLF5.6CNDS** **220-240V/50Hz** Conf. 1 Sales code: **106h2603**

## Configuration

Motorconfiguration CSIR  
 Power supply (nominal) 220-240V/50Hz 1~  
 Refrigerant R290  
 Application LBP+MBP  
 Voltage range 198-254V  
 Starting torque HST  
 Approvals VDE  
 CCC

## Electrical accessories / wiring diagram

CSIR



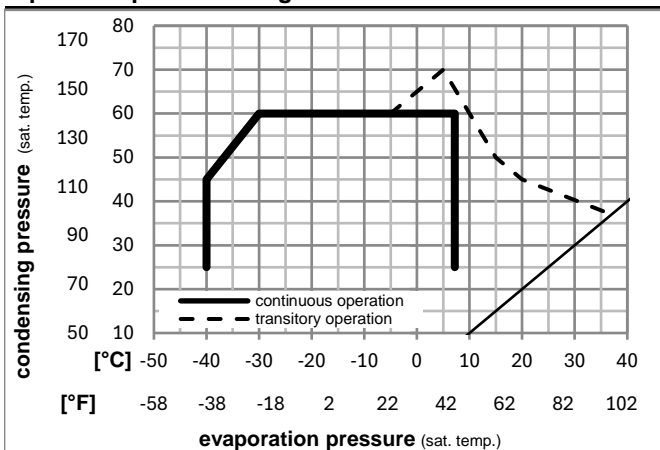
## Ambient/ machine room temperatures minimum /maximum

Ambient temperature range: 10 - 43°C / 50 - 110°F

Machine room temperature range: 10 - 48°C / 50 - 119°F

Compressor cooling: fan 3m/s

## Operation pressure range



## Components

a5	current relay (T0089/L6-S2)	117U7070
c	start capacitor (80µF, 6.3mm)	117U5001
b, d	cover + clamp + screws(5VA-compl.)	103N0600

## Alternative components

b, d	100x cover + clamp + screws(5VA)	103N2060
b, d	cover + clamp + screws(5VA) in bag	103N1060

## Model

Designation **KLF5.6CNSD** **220-240V/50Hz** Conf. 1 Sales code: **106h2603**

## Optimization + standard conditions

R290, 220V/50Hz, CSIR, fan 3m/s, VDE, CCC

pe	pc	RGT	Tliq	Cooling capacity			COP	EER	Power consumption			Ref. mass flow	ASHRAE LBP	
				[W]	[Btu/h]	[kcal/h]			P1 [W]	I [A]	m [kg/h]			
[°C]	-23	54	32	32	264,1	902	227,3	1,51	5,14	1,30	175,3	1,21	2,67	ASHRAE LBP
[°F]	-10	130	90	90										
[°C]	-25	55	32	55	196,6	671	169,2	1,16	3,97	1,00	169,2	1,19	2,45	cecomaf LBP
[°F]	-13	131	90	131										
[°C]	-35	40	20	40	143,9	491	123,8	1,18	4,02	1,01	122,2	1,06	1,64	EN12900 LBP
[°F]	-31	104	68	104										
[°C]	-7	54	35	46	477,4	1631	410,9	2,02	6,90	1,74	236,4	1,42	5,45	ASHRAE MBP
[°F]	20	130	95	115										
[°C]	-10	55	32	55	378,5	1293	325,7	1,67	5,72	1,44	226,0	1,38	4,79	cecomaf MBP
[°F]	14	131	90	131										
[°C]	-10	45	20	45	419,9	1434	361,3	2,04	6,96	1,75	205,9	1,31	5,16	EN12900 MBP
[°F]	14	113	68	113										

## Performance tables

R290, 220V/50Hz, CSIR, fan 3m/s, VDE, CCC

	pe		Cooling capacity			COP	EER		P1	I	m
	[°C]	[°F]	[W]	[Btu/h]	[kcal/h]		[W/W]	[Btu/Wh]			
[°C / °F]	-35	-31	143,2	489	123,2	1,11	3,78	0,95	129,3	1,08	1,60
cond. pressure	-35	-31	143,2	489	123,2	1,11	3,78	0,95	129,3	1,08	1,60
pc= 45/113	-25	-13	232,6	794	200,2	1,45	4,95	1,25	160,5	1,16	2,62
return gas temp.	-15	5	357,8	1222	308,0	1,87	6,38	1,61	191,6	1,26	4,07
RGT= 32/90	-5	23	529,1	1807	455,4	2,42	8,26	2,08	218,8	1,35	6,09
liquid temp	0	32	635,2	2169	546,7	2,77	9,44	2,38	229,7	1,39	7,37
Tliq= 45/113	7,2	45	815,3	2784	701,7	3,38	11,55	2,91	241,1	1,43	9,58
[°C / °F]	-35	-31	110,0	376	94,7	0,83	2,85	0,72	132,0	1,08	1,36
cond. pressure	-35	-31	110,0	376	94,7	0,83	2,85	0,72	132,0	1,08	1,36
pc= 55/131	-25	-13	196,6	671	169,2	1,16	3,97	1,00	169,2	1,19	2,45
return gas temp	-15	5	309,2	1056	266,1	1,49	5,09	1,28	207,6	1,31	3,89
RGT= 32/90	-5	23	458,2	1565	394,3	1,88	6,43	1,62	243,3	1,44	5,84
liquid temp	0	32	549,5	1877	472,9	2,12	7,25	1,83	259,0	1,50	7,06
Tliq= 55/131	7,2	45	704,0	2404	605,9	2,53	8,66	2,18	277,7	1,57	9,17