

## Model

Designation	<b>NF6FK</b>	115-127V/60Hz 1~	Sales code:	<b>105G5629</b>
-------------	--------------	------------------	-------------	-----------------

## Compressor design

Oil type	Polyolester	Refrigerant(s)	<b>R134a</b>
Oil viscosity	32cST	Displacement	6,13cm <sup>3</sup> / 0,37cu.in
Oil quantity	268cm <sup>3</sup> / 9,1fl.oz	Compressors on pallet	80
Refr. charge - tech. limit	400g / 14,1oz		
Free gas volume comp.	2360cm <sup>3</sup> / 79,8fl.oz		
Weight	10,5kg / 23,1lbs		
Motor protection	1# internal		
Winding resistance main	2,04Ω (at 25°C)		
Winding resistance aux	9,13Ω (at 25°C)		
Max. winding temp.	125°C / 257°F		
Max. discharge temp.	130°C / 266°F		



## General - Configurations with NF6FK

	<b>Conf. 1</b>	<b>Conf. 2</b>
Motorconfiguration	CSIR	RSIR
Power supply (nominal)	115-127V/60Hz	115-127V/60Hz
Number of phases	1	1
Voltage range	95-135V	95-135V
Approvals	UL	UL
Starting torque	HST	LST
Note	- / -	

## Applications with NF6FK

	<b>Conf. 1</b>	<b>Conf. 2</b>
Refrigerant	R134a	R134a
Application	LBP+MBP	LBP+MBP
System cooling	static	static
Hot gas defrost	- / -	- / -
Long interval pull down	OK	OK

## Electrical data - Configurations with NF6FK

	<b>Conf. 1</b>	<b>Conf. 2</b>
Starting device type	relay	PTC
Run capacitor	- / -	- / -
Start capacitor	320μF	- / -
LRA (locked rotor amps / 4s)	24A	
RLA (rated load amps / 1s)	3,6A	- / A
Cut in current		

## Model

Designation

**NF6FK**

115-127V/60Hz 1~

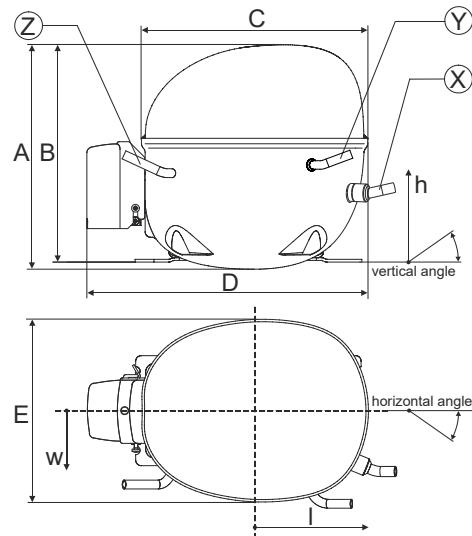
Sales code:

**105G5629**

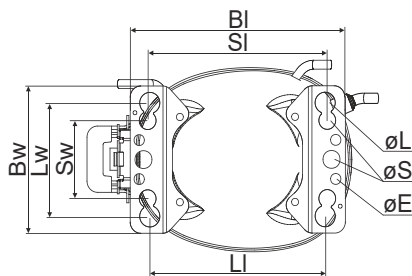
## Compressor dimensions

<b>Housing</b>	A Height	197mm / 7,76in
	B Height	191mm / 7,52in
	C Length shell	205mm / 8,07in
	D Length w. cover	254mm / 10in
	E Width	166mm / 6,54in

Connectors		Suction	Discharge	Process
		X	Y	Z
Diameter	[mm]	øi 8,11-8,29	øi 6,41-6,59	øi 6,41-6,59
	(i:inside, o:outside) [in]	øi 0,32-0,33	øi 0,25-0,26	øi 0,25-0,26
Material		copper	copper	copper
Horizontal angle	±2°	0°	0°	0°
Vertical angle	±2°	15°	35°	155°
Position l/h/w	[mm]	126/76/78	133/103/54	-107/94/72
	[in]	4,9/3/3,1	5,2/4/2,1	-4,2/3,7/2,8
Straight tube l.	[mm]	12	12	12
	[in]	0,5	0,5	0,5

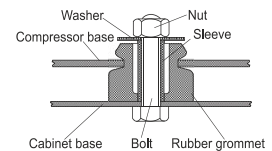


## Compressor fixation

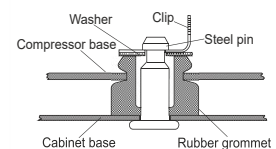


Baseplate	[mm]	[inch]
BI	204	8.03
BW	132	5.2
øE	ø 9.7	ø 0.38
Large holes		
LI	165	6.5
Lw	101.6	4
øL	ø 19	ø 0.75
Small holes		
SI	170	6.7
Sw	70	2.76
øS	ø 16	ø 0.63

### Bolt joint



### Snap-on



## Mounting accessories

	one comp.	multi pack
Bolt joint   M6   ø16mm	118-1917	118-1918
Bolt joint   ø1/4"   ø16mm	118-1946	
Bolt joint   ø1/4"   ø19mm	118-1949	
Snap-on   ø7,3   ø16mm	118-1947	118-1919

## Application notes

LRA value on compressor label and datasheet may differ due to different test conditions for UL approval.

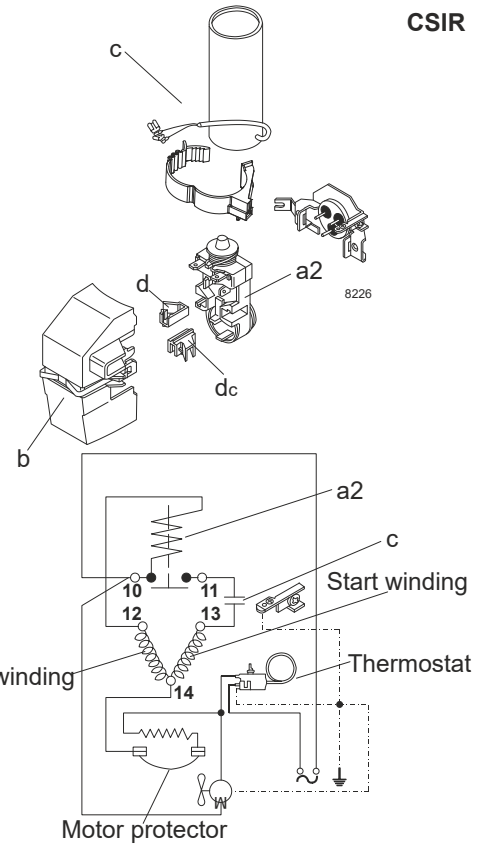
## Model

Designation	<b>NF6FK</b>	<b>115-127V/60Hz</b>	<b>Conf. 1</b>	Sales code:	<b>105G5629</b>
-------------	--------------	----------------------	----------------	-------------	-----------------

## Configuration

Motor configuration	CSIR
Power supply (nominal)	115-127V/60Hz 1~
Refrigerant	R134a
Application	LBP+MBP
Voltage range	95-135V
Starting torque	HST
Approvals	UL

## Electrical accessories / wiring diagram

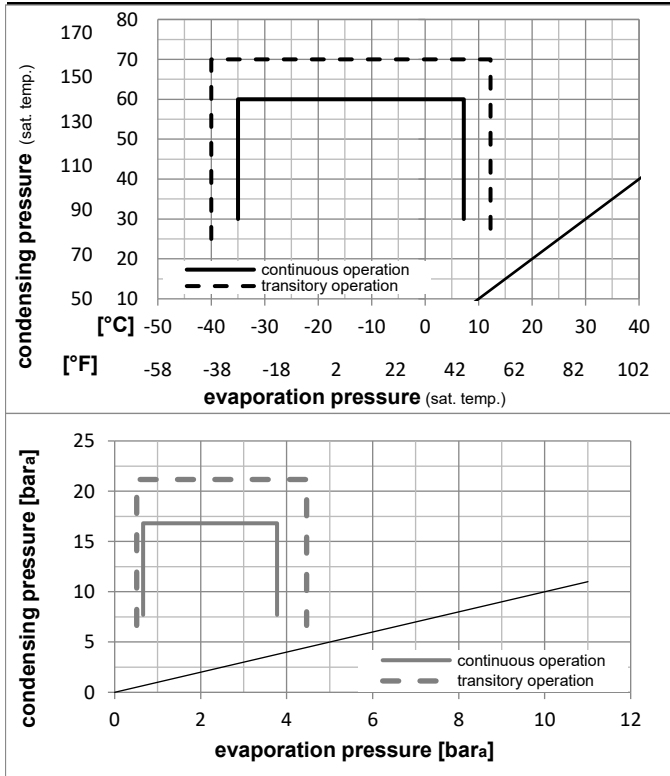


## Ambient temperatures / system cooling

Ambient temperature min.:	10°C / 50°F
Ambient temperature max.:	43°C / 110°F

System cooling (n/a: outside limits)			
T ambient	LBP	MBP	HBP
32°C / 90°F	static	static	n/a
38°C / 100°F	static	static	n/a
43°C / 110°F	fan 1,5m/s	fan 1,5m/s	n/a

## Operation pressure range



## Components

a2	current relay	117U4132
c	start capacitor (320µF)	117U5022
b	plastic cover	117U1021
d/dc	cord relief	117U0349

### Model

Designation **NF6FK** **115-127V/60Hz** Conf. 1 Sales code: **105G5629**

### Optimization + standard conditions

R134a, 115V/60Hz, CSIR, fan 3m/s, UL

	Evaporating pressure (saturation temperature)				Condensing pressure (saturation temperature)			Return gas temp.	Liquid temp.	Cooling capacity	COP	EER	Power consumption			ASHRAE LBP
	pe	pc	RGT	Tliq	[W]	[Btu/h]	[kcal/h]						P1	I	Ref. mass flow	
[°C]																
[°F]																
	-23	54	32	32	195,7	668	168,5	1,14	3,88	0,98	172,3	2,65	3,80			
	-10	130	90	90												
	-25	55	32	55	142,5	487	122,6	0,88	3,00	0,76	162,2	2,60	3,41			
	-13	131	90	131												
	-35	40	20	40	96,9	331	83,4	0,89	3,03	0,76	109,3	2,41	2,13			
	-31	104	68	104												
	-7	54	35	46	408,8	1396	351,8	1,58	5,38	1,36	259,5	3,19	8,92			
	20	130	95	115												
	-10	55	32	55	317,1	1083	272,9	1,30	4,44	1,12	244,0	3,08	7,67			
	14	131	90	131												
	-10	45	20	45	360,4	1231	310,2	1,56	5,34	1,35	230,3	2,98	8,44			
	14	113	68	113												

### Performance tables

R134a, 115V/60Hz, CSIR, fan 3m/s, UL

	pe		Cooling capacity			COP	EER	P1	I	m	
	[°C]	[°F]	[W]	[Btu/h]	[kcal/h]	[W/W]	[Btu/Wh]	[kcal/Wh]	[W]	[A]	[kg/h]
[°C / °F]	-35	-31	87,4	298	75,2	0,82	2,81	0,71	106,3	2,37	1,88
cond. pressure	-23	-10	191,5	654	164,8	1,12	3,84	0,97	170,4	2,64	4,15
pc= 45/113	-15	5	295,7	1010	254,5	1,42	4,83	1,22	209,0	2,85	6,45
return gas temp.	-9	15	383,5	1310	330,0	1,65	5,63	1,42	232,6	3,00	8,40
RGT= 32/90	-4	25	488,5	1668	420,4	1,91	6,53	1,65	255,4	3,15	10,75
liquid temp	0	32	573,6	1959	493,6	2,12	7,23	1,82	271,1	3,27	12,68
Tliq= 45/113	7,2	45	759,7	2595	653,8	2,53	8,63	2,17	300,7	3,49	16,97
[°C / °F]	-35	-31	63,3	216	54,5	0,67	2,28	0,57	94,9	2,31	1,51
cond. pressure	-23	-10	158,0	540	136,0	0,92	3,13	0,79	172,3	2,65	3,78
pc= 55/131	-15	5	249,2	851	214,5	1,14	3,89	0,98	218,7	2,92	6,00
return gas temp	-9	15	325,4	1111	280,0	1,32	4,50	1,13	246,8	3,10	7,87
RGT= 32/90	-4	25	416,5	1422	358,4	1,52	5,20	1,31	273,3	3,30	10,14
liquid temp	0	32	490,4	1675	422,1	1,68	5,75	1,45	291,3	3,44	12,00
Tliq= 55/131	7,2	45	652,9	2230	561,9	2,01	6,87	1,73	324,4	3,71	16,15

## Model

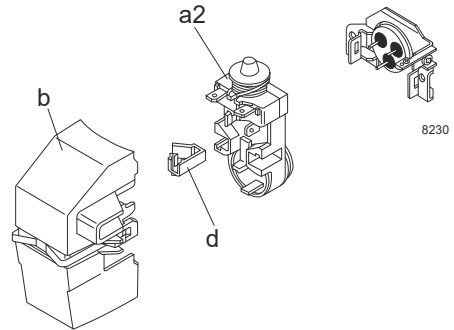
Designation	<b>NF6FK</b>	<b>115-127V/60Hz</b>	<b>Conf. 2</b>	Sales code:	<b>105G5629</b>
-------------	--------------	----------------------	----------------	-------------	-----------------

## Configuration

Motorconfiguration	RSIR
Power supply (nominal)	115-127V/60Hz 1~
Refrigerant	R134a
Application	LBP+MBP
Voltage range	95-135V
Starting torque	LST
Approvals	UL

## Electrical accessories / wiring diagram

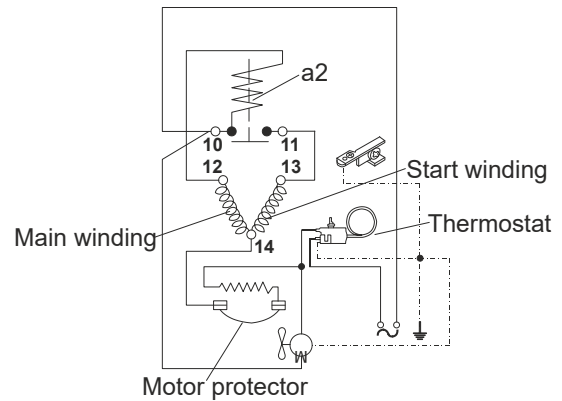
RSIR



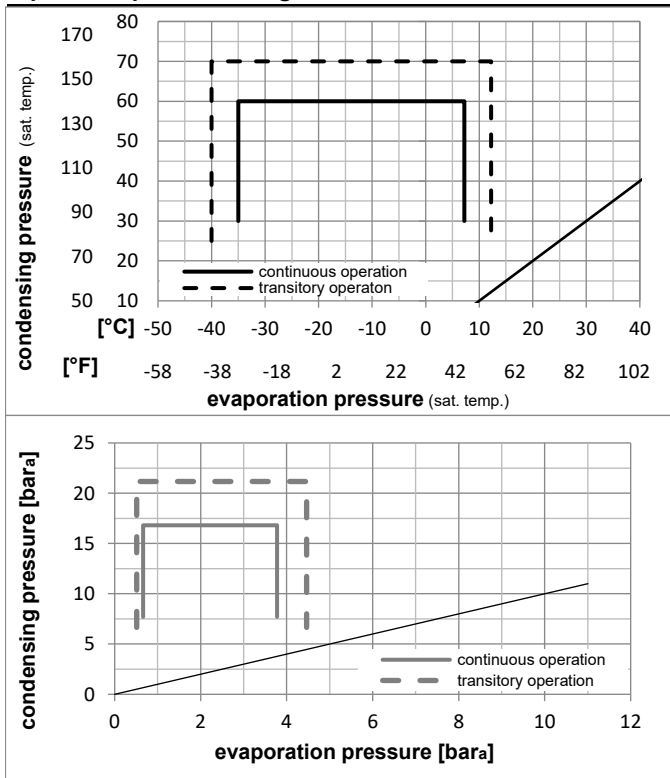
## Ambient temperatures / system cooling

Ambient temperature min.:	10°C / 50°F
Ambient temperature max.:	43°C / 110°F

System cooling (n/a: outside limits)			
T ambient	LBP	MBP	HBP
32°C / 90°F	static	static	n/a
38°C / 100°F	static	static	n/a
43°C / 110°F	fan 1,5m/s	fan 1,5m/s	n/a



## Operation pressure range



## Components

starter kit	117U4131
b plastic cover	117U1021
d/dc cord relief	117U0349

### Model

Designation **NF6FK** **115-127V/60Hz** Conf. 2 Sales code: **105G5629**

### Optimization + standard conditions

R134a, 115V/60Hz, RSIR, fan 3m/s, UL

	Evaporating pressure (saturation temperature)				Cooling capacity			COP	EER	P1	Power consumption			ASHRAE LBP
	pe	pc	RGT	Tliq	[W]	[Btu/h]	[kcal/h]				l	Current consumption	Ref. mass flow	
	[°C]	[°F]	[°C]	[°F]	[W]	[Btu/h]	[kcal/h]	[W/W]	[Btu/Wh]	[kcal/Wh]	[W]	[A]	[kg/h]	
	-23	54	32	32	195,7	668	168,5	1,14	3,88	0,98	172,3	2,65	3,80	ASHRAE LBP
	[-10]	[130]	[90]	[90]										
	-25	55	32	55	142,5	487	122,6	0,88	3,00	0,76	162,2	2,60	3,41	cecomaf LBP
	[-13]	[131]	[90]	[131]										
	-35	40	20	40	96,9	331	83,4	0,89	3,03	0,76	109,3	2,41	2,13	EN12900 LBP
	[-31]	[104]	[68]	[104]										
	-7	54	35	46	408,8	1396	351,8	1,58	5,38	1,36	259,5	3,19	8,92	ASHRAE MBP
	[20]	[130]	[95]	[115]										
	-10	55	32	55	317,1	1083	272,9	1,30	4,44	1,12	244,0	3,08	7,67	cecomaf MBP
	[-14]	[131]	[90]	[131]										
	-10	45	20	45	360,4	1231	310,2	1,56	5,34	1,35	230,3	2,98	8,44	EN12900 MBP
	[-14]	[113]	[68]	[113]										

### Performance tables

R134a, 115V/60Hz, RSIR, fan 3m/s, UL

	pe		Cooling capacity			COP	EER	P1	l	m	
	[°C]	[°F]	[W]	[Btu/h]	[kcal/h]						
[°C / °F]	-35	-31	87,4	298	75,2	0,82	2,81	0,71	106,3	2,37	1,88
cond. pressure	-23	-10	191,5	654	164,8	1,12	3,84	0,97	170,4	2,64	4,15
pc= 45/113	-15	5	295,7	1010	254,5	1,42	4,83	1,22	209,0	2,85	6,45
return gas temp.	-9	15	383,5	1310	330,0	1,65	5,63	1,42	232,6	3,00	8,40
RGT= 32/90	-4	25	488,5	1668	420,4	1,91	6,53	1,65	255,4	3,15	10,75
liquid temp	0	32	573,6	1959	493,6	2,12	7,23	1,82	271,1	3,27	12,68
Tliq= 45/113	7,2	45	759,7	2595	653,8	2,53	8,63	2,17	300,7	3,49	16,97
[°C / °F]	-35	-31	63,3	216	54,5	0,67	2,28	0,57	94,9	2,31	1,51
cond. pressure	-23	-10	158,0	540	136,0	0,92	3,13	0,79	172,3	2,65	3,78
pc= 55/131	-15	5	249,2	851	214,5	1,14	3,89	0,98	218,7	2,92	6,00
return gas temp	-9	15	325,4	1111	280,0	1,32	4,50	1,13	246,8	3,10	7,87
RGT= 32/90	-4	25	416,5	1422	358,4	1,52	5,20	1,31	273,3	3,30	10,14
liquid temp	0	32	490,4	1675	422,1	1,68	5,75	1,45	291,3	3,44	12,00
Tliq= 55/131	7,2	45	652,9	2230	561,9	2,01	6,87	1,73	324,4	3,71	16,15