

## Model

Designation	<b>NL7.3CNX.2</b>	115V/60Hz 1~	Sales code:	<b>105H6790</b>
-------------	-------------------	--------------	-------------	-----------------

## Compressor design

Oil type	Polyolester	Refrigerant(s)	<b>R290</b>
Oil viscosity	32cST	Displacement	7,27cm <sup>3</sup> / 0,44cu.in
Oil quantity	268cm <sup>3</sup> / 9,1fl.oz	Compressors on pallet	80
Refr. charge - tech. limit	150g / 5,3oz		
Free gas volume comp.	2360cm <sup>3</sup> / 79,8fl.oz		
Weight	10,5kg / 23,1lbs		
Motor protection	1# internal		
Winding resistance main	1,3Ω (at 25°C)		
Winding resistance aux	7Ω (at 25°C)		
Max. winding temp.	125°C / 257°F		
Max. discharge temp.	130°C / 266°F		



## General - Configurations with NL7.3CNX.2

	<b>Conf. 1</b>
Motorconfiguration	CSIR
Power supply (nominal)	115V/60Hz
Number of phases	1
Voltage range	95-135V
Approvals	CCC, UL
Starting torque	HST
Note	- / -

## Applications with NL7.3CNX.2

	<b>Conf. 1</b>
Refrigerant	R290
Application	LBP+MBP
System cooling	fan 3m/s
Hot gas defrost	- / -
Long interval pull down	OK

## Electrical data - Configurations with NL7.3CNX.2

	<b>Conf. 1</b>
Starting device type	relay
Run capacitor	- / -
Start capacitor	125μF
LRA (locked rotor amps / 4s)	26,4A
RLA (rated load amps / 1s)	5,3A
Cut in current	26,4A

## Model

Designation

**NL7.3CNX.2**

115V/60Hz 1~

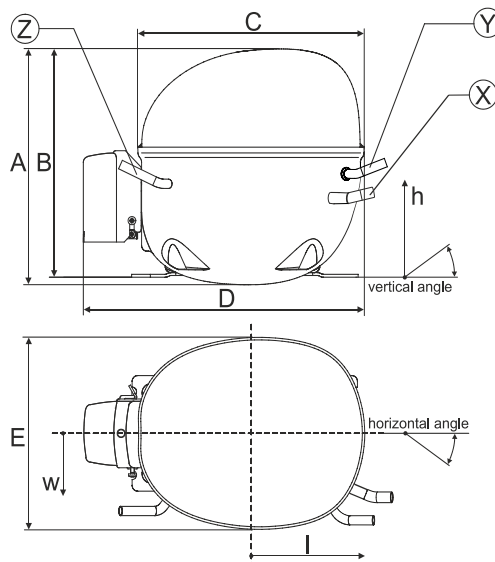
Sales code:

**105H6790**

## Compressor dimensions

Housing	A Height	203mm / 7,99in
	B Height	197mm / 7,76in
	C Length shell	205mm / 8,07in
	D Length w. cover	254mm / 10in
	E Width	166mm / 6,54in

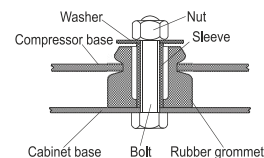
Connectors		Suction	Discharge	Process
		X	Y	Z
Diameter	[mm]	øi 8,11-8,29	øi 6,41-6,59	øi 6,41-6,59
	(i:inside, o:outside) [in]	øi 0,32-0,33	øi 0,25-0,26	øi 0,25-0,26
Material		copper	copper	copper
Horizontal angle	±2°	0°	0°	0°
Vertical angle	±2°	15°	35°	155°
Position l/h/w	[mm]	126/76/78	133/103/54	-107/94/72
	[in]	4,9/3/3,1	5,2/4/2,1	-4,2/3,7/2,8
Straight tube l.	[mm]	12	12	12
	[in]	0,5	0,5	0,5



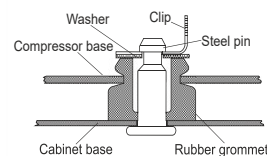
## Compressor fixation



### Bolt joint



### Snap-on



## Mounting accessories

	one comp.	multi pack
Bolt joint   M6   ø16mm	118-1917	118-1918
Bolt joint   ø1/4"   ø16mm	118-1946	
Bolt joint   ø1/4"   ø19mm	118-1949	
Snap-on   ø7,3   ø16mm	118-1947	118-1919

## Application notes

LRA value on compressor label and datasheet may differ due to different test conditions for UL approval.

Provision for PE Grounding is located at the PE Stamp on the compressor

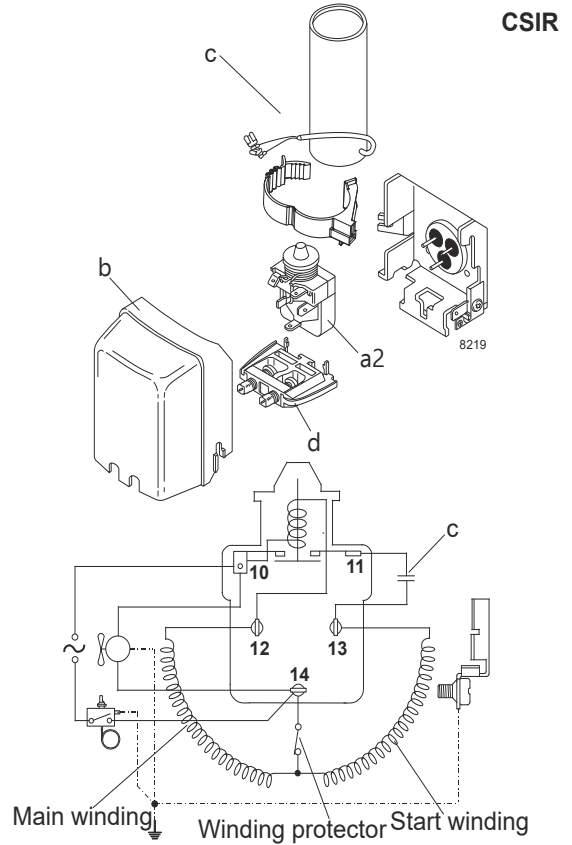
### Model

Designation	<b>NL7.3CNX.2</b>	<b>115V/60Hz</b>	<b>Conf. 1</b>	Sales code:	<b>105H6790</b>
-------------	-------------------	------------------	----------------	-------------	-----------------

### Configuration

Motorconfiguration	CSIR
Power supply (nominal)	115V/60Hz 1~
Refrigerant	R290
Application	LBP+MBP
Voltage range	95-135V
Starting torque	HST
Approvals	CCC
	UL

### Electrical accessories / wiring diagram



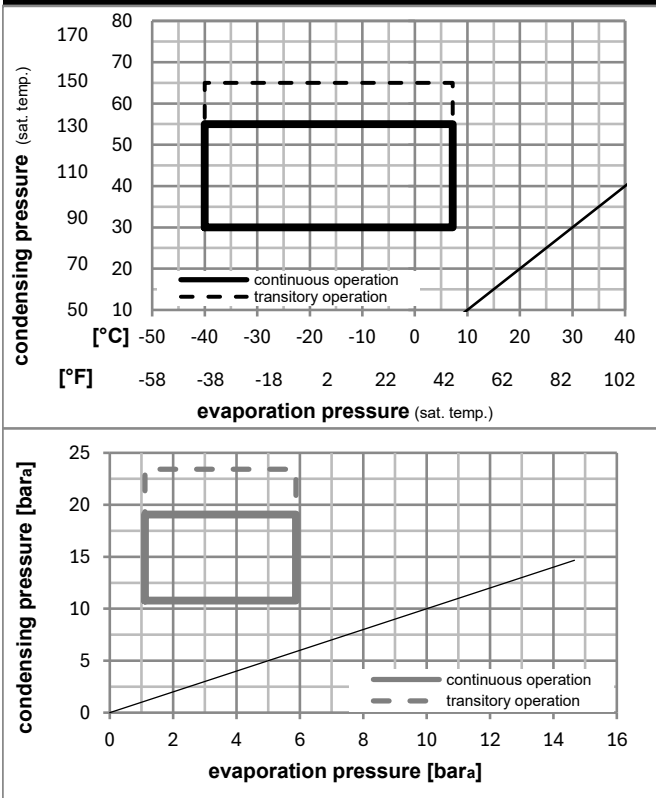
### Ambient/ machine room temperatures minimum /maximum

Ambient temperature range: 10 - 43°C / 50 - 110°F

Machine room temperature range: 10 - 48°C / 50 - 119°F

Compressor cooling: fan 3m/s

### Operation pressure range



### Components

a2	relay	117U7013
c	start capacitor (125μF, 6,3mm)	117U5035
b	plastic cover	103N2011
d	cord relief	103N1010

## Model

Designation **NL7.3CNX.2** **115V/60Hz** Conf. 1 Sales code: **105H6790**

## Optimization + standard conditions

R290, 115V/60Hz, CSIR, fan 3m/s, CCC, UL

	Evaporating pressure (saturation temperature)				Cooling capacity			COP	EER	P1	Power consumption		ASHRAE LBP	
	pe	pc	RGT	Tliq	[W]	[Btu/h]	[kcal/h]				I	m		
	[°C]	[°F]	[°C]	[°F]	[W]	[Btu/h]	[kcal/h]	[W/W]	[Btu/Wh]	[kcal/Wh]	[W]	[A]	[kg/h]	
	-23	54	32	32	420,6	1436	361,9	1,43	4,89	1,23	293,6	3,82	4,26	ASHRAE LBP
	-10	130	90	90										
	-25	55	32	55	314,7	1075	270,9	1,11	3,79	0,96	283,3	3,75	3,92	cecomaf LBP
	-13	131	90	131										
	-35	40	20	40	230,6	788	198,5	1,01	3,45	0,87	228,3	3,41	2,63	EN12900 LBP
	-31	104	68	104										
	-23	49	4,4	49	342,9	1171	295,1	1,18	4,03	1,01	290,8	3,79	4,75	ARI540 LBP
	-10	120	40	120										
	-23	41	32	32	451,9	1543	389,0	1,60	5,47	1,38	282,0	3,73	4,58	AHAM LBP
	-10	105	90	90										
	-35	45	32	45	226,4	773	194,8	0,99	3,38	0,85	229,0	3,41	2,54	opt
	-31	113	90	113										

## Performance tables

R290, 115V/60Hz, CSIR, fan 3m/s, CCC, UL

	pe		Cooling capacity			COP	EER		P1	I	m
	[°C]	[°F]	[W]	[Btu/h]	[kcal/h]		[Btu/Wh]	[kcal/Wh]			
[°C / °F]	-40	-40	178,2	609	153,4	0,88	2,99	0,75	203,7	3,30	1,99
cond. pressure	-34	-30	232,7	795	200,2	1,00	3,43	0,86	231,9	3,43	2,61
pc= 45/113	-23	-10	398,7	1362	343,2	1,39	4,74	1,19	287,5	3,77	4,50
return gas temp.	-15	5	576,9	1970	496,5	1,76	6,02	1,52	327,2	4,05	6,56
RGT= 32/90	-4	25	891,7	3045	767,4	2,38	8,11	2,04	375,3	4,42	10,28
liquid temp	0	32	1023,9	3497	881,2	2,62	8,96	2,26	390,3	4,53	11,88
Tliq= 45/113	7,2	45	1301,3	4444	1119,9	3,13	10,70	2,70	415,2	4,70	15,29
[°C / °F]	-40	-40	159,8	546	137,5	0,84	2,88	0,73	189,6	3,24	1,97
cond. pressure	-34	-30	202,3	691	174,1	0,90	3,08	0,78	224,1	3,40	2,50
pc= 55/131	-23	-10	340,1	1161	292,7	1,16	3,95	1,00	293,7	3,82	4,24
return gas temp	-15	5	493,2	1684	424,5	1,43	4,88	1,23	345,1	4,18	6,20
RGT= 32/90	-4	25	769,4	2628	662,2	1,88	6,41	1,61	410,2	4,68	9,82
liquid temp	0	32	886,8	3028	763,2	2,05	7,02	1,77	431,6	4,85	11,39
Tliq= 55/131	7,2	45	1134,6	3875	976,5	2,42	8,26	2,08	469,0	5,13	14,78