

Model

Designation	SC15CL	220-240V/50Hz 1~	Sales code:	104L2875
-------------	---------------	-------------------------	-------------	-----------------

Compressor design

Oil type	Polyolester	Refrigerant(s)	R404A, R507
Oil viscosity	32cST	Displacement	15,28cm ³ / 0,93cu.in
Oil quantity	555cm ³ / 18,8fl.oz	Compressors on pallet	80
Refr. charge - tech. limit	1300g / 45,9oz		
Free gas volume comp.	1510cm ³ / 51,1fl.oz		
Weight	13,8kg / 30,4lbs		
Motor protection	1# internal		
Winding resistance main	3,7Ω (at 25°C)		
Winding resistance aux	14Ω (at 25°C)		
Max. winding temp.	125°C / 257°F		
Max. discharge temp.	130°C / 266°F		



General - Configurations with SC15CL

	Conf. 1	Conf. 2
Motorconfiguration	CSIR	CSCR
Power supply (nominal)	220-240V/50Hz	220-240V/50Hz
Number of phases	1	1
Voltage range	198-254V	198-254V
Approvals	VDE	VDE
Starting torque	HST	HST
Note	- / -	

Applications with SC15CL

	Conf. 1	Conf. 2
Refrigerant	R404A	R404A
Application	LBP+MBP	LBP+MBP
System cooling	fan 3m/s	fan 3m/s
Hot gas defrost	OK	OK
Long interval pull down	OK	OK

Electrical data - Configurations with SC15CL

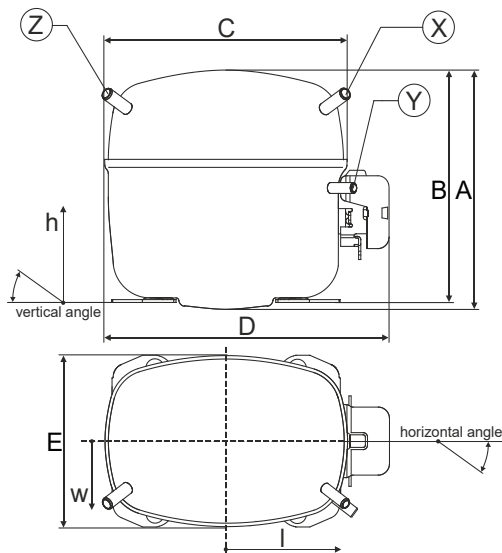
	Conf. 1	Conf. 2
Starting device type	relay	relay
Run capacitor	-/-	10μF
Start capacitor	80μF	80μF
LRA (locked rotor amps / 4s)	20,43A	20,43A
RLA (rated load amps / 1s)	3,9A	4,2A
Cut in current	20,43A	20,43A

Model

Designation	SC15CL	220-240V/50Hz 1~	Sales code:	104L2875
-------------	---------------	-------------------------	-------------	-----------------

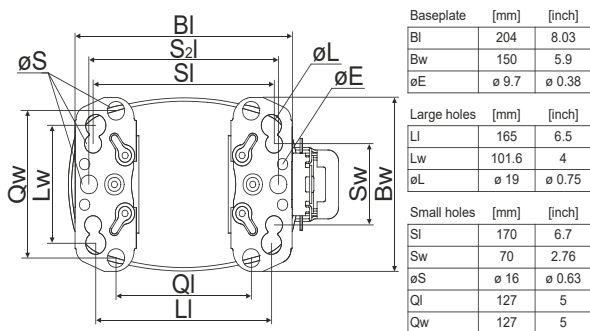
Compressor dimensions

Housing	A Height	219mm / 8,62in
	B Height	213mm / 8,39in
	C Length shell	239mm / 9,41in
	D Length w. cover	255mm / 10,04in
	E Width	151mm / 5,94in



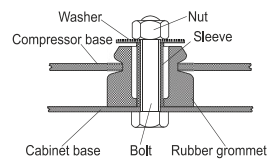
Connectors		Suction	Discharge	Process
		X	Y	Z
Diameter	[mm]	øi 9,54-9,72	øi 6,41-6,59	øi 6,41-6,59
(i:inside, o:outside)	[in]	øi 0,38-0,38	øi 0,25-0,26	øi 0,25-0,26
Material		copper	copper	copper
Horizontal angle	±2°	37°	37°	143°
Vertical angle	±2°	30°	0°	150°
Position l/h/w	[mm]	107/193/55	115/110/63	-107/193/55
	[in]	4,2/7,6/2,2	4,5/4,3/2,5	-4,2/7,6/2,2
Straight tube l.	[mm]	12	12	12
	[in]	0,5	0,5	0,5

Compressor fixation

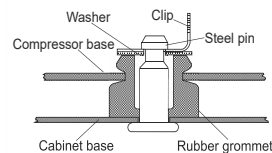


Baseplate	[mm]	[inch]
BI	204	8.03
Bw	150	5.9
øE	ø 9.7	ø 0.38
Large holes	[mm]	[inch]
LI	165	6.5
LW	101.6	4
øL	ø 19	ø 0.75
Small holes	[mm]	[inch]
SI	170	6.7
Sw	70	2.76
øS	ø 16	ø 0.63
QL	127	5
Qw	127	5

Bolt joint



Snap-on



Mounting accessories

	one comp.	multi pack
Bolt joint M6 ø16mm	118-1917	118-1918
Bolt joint ø1/4" ø16mm	118-1946	
Bolt joint ø1/4" ø19mm	118-1949	
Snap-on ø7,3 ø16mm	118-1947	118-1919

Application notes

Provision for PE Grounding is located at the PE Stamp on the compressor

Model

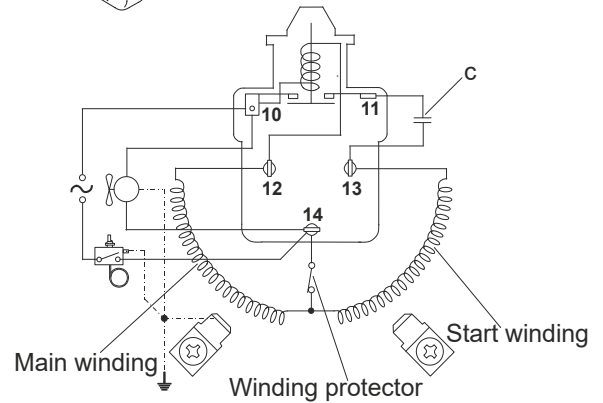
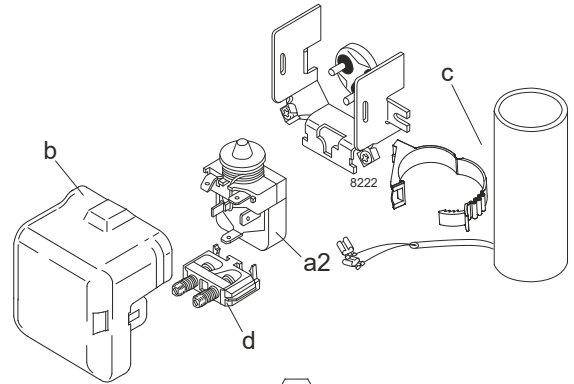
Designation	SC15CL	220-240V/50Hz	Conf. 1	Sales code:	104L2875
-------------	---------------	----------------------	---------	-------------	-----------------

Configuration

Motorconfiguration	CSIR
Power supply (nominal)	220-240V/50Hz 1~
Refrigerant	R404A
Application	LBP+MBP
Voltage range	198-254V
Starting torque	HST
Approvals	VDE

Electrical accessories / wiring diagram

CSIR



Ambient/ machine room temperatures minimum /maximum

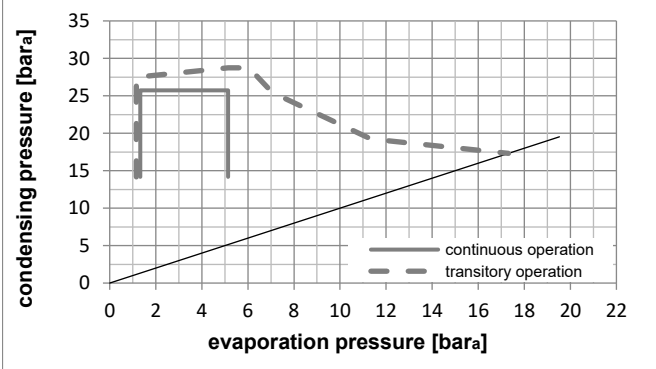
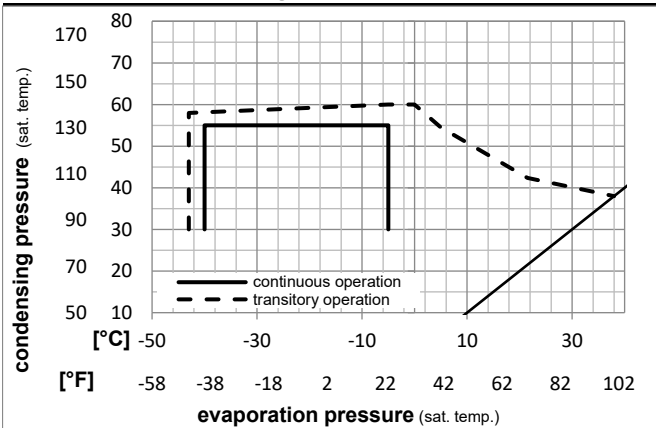
Ambient temperature range: 10 - 38°C / 50 - 101°F

Machine room temperature range: 10 - 43°C / 50 - 110°F

Compressor cooling: fan 3m/s

Operation Limits

Operation pressure range



Components

a2	relay	117U6019
c	start capacitor (80μF)	117U5017
d	cord relief	103N1004
b	plastic cover	103N2009

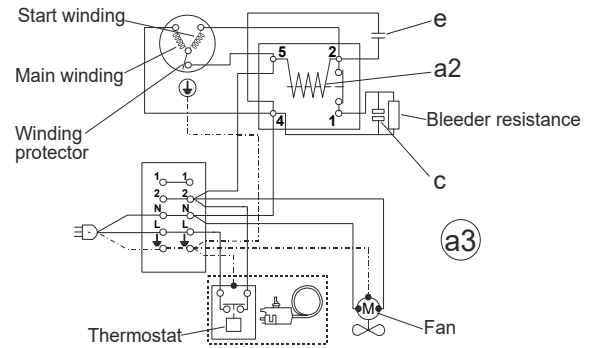
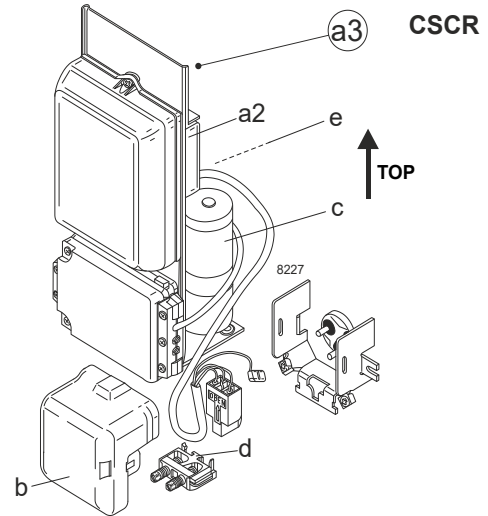
Model

Designation	SC15CL	220-240V/50Hz	Conf. 2	Sales code:	104L2875
-------------	---------------	----------------------	---------	-------------	-----------------

Configuration

Motorconfiguration	CSCR
Power supply (nominal)	220-240V/50Hz 1~
Refrigerant	R404A
Application	LBP+MBP
Voltage range	198-254V
Starting torque	HST
Approvals	VDE

Electrical accessories / wiring diagram



Ambient/ machine room temperatures minimum /maximum

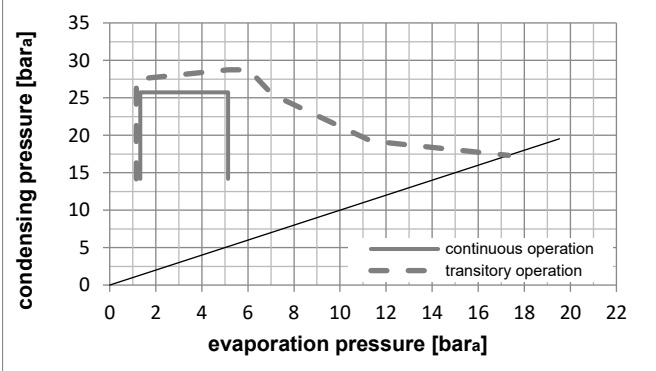
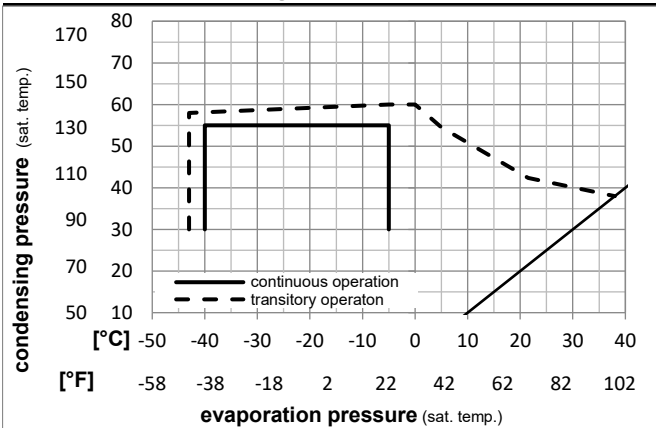
Ambient temperature range: 10 - 38°C / 50 - 101°F

Machine room temperature range: 10 - 43°C / 50 - 110°F

Compressor cooling: fan 3m/s

Operation Limits

Operation pressure range



Components

a3	SC starter kit (550mm)	117-7027
b	plastic cover	103N2009
d	cord relief	103N1004

Alternative components

a3	SC starter kit (1000mm)	117-7040
a3	SC starter kit (650mm)	117-7046
c	start capacitor (80µF)	117U5373
e	run capacitor (10µF, 6.3mm)	117-7112

Model

Designation	SC15CL	220-240V/50Hz	Conf. 2	Sales code:	104L2875
-------------	---------------	----------------------	----------------	-------------	-----------------

Optimization + standard conditions

R404A, 220V/50Hz, CSCR, fan 3m/s, VDE

	Evaporating pressure (saturation temperature)				Cooling capacity			COP	EER	P1	Power consumption		Ref. mass flow	
	pe	pc	RGT	Tliq	[W]	[Btu/h]	[kcal/h]				[A]	I		
	[°C]	[°C]	[°C]	[°C]										
	-23	54	32	32	702,2	2398	604,4	1,32	4,51	1,14	532,3	3,25	16,36	ASHRAE LBP
	[°F]													
	-10	130	90	90										
	-25	55	32	55	460,3	1572	396,2	0,92	3,15	0,79	498,8	3,14	14,39	cecomaf LBP
	[°F]													
	-13	131	90	131										
	-35	40	20	40	357,7	1222	307,8	0,95	3,24	0,82	377,6	2,79	9,72	EN12900 LBP
	[°F]													
	-31	104	68	104										
	-23	49	4,4	49	535,4	1829	460,8	0,99	3,38	0,85	541,1	3,30	18,96	ARI540 LBP
	[°F]													
	-10	120	40	120										
	-23	41	32	32	812,6	2775	699,3	1,58	5,39	1,36	514,6	3,25	18,93	AHAM LBP
	[°F]													
	-10	105	90	90										
	-35	45	32	45	302,5	1033	260,3	0,83	2,82	0,71	365,9	2,79	8,09	opt
	[°F]													
	-31	113	90	113										

Performance tables

R404A, 220V/50Hz, CSCR, fan 3m/s, VDE

	pe		Cooling capacity			COP	EER		P1	I	m
	[°C]	[°F]	[W]	[Btu/h]	[kcal/h]		[Btu/Wh]	[kcal/Wh]			
[°C / °F]	-40	-40	152,7	521	131,4	0,56	1,91	0,48	272,8	2,59	4,07
cond. pressure	-35	-31	302,5	1033	260,3	0,83	2,82	0,71	365,9	2,79	8,09
pc= 45/113	-30	-22	457,0	1561	393,3	1,03	3,52	0,89	443,6	3,00	12,27
return gas temp.	-25	-13	621,2	2121	534,6	1,21	4,14	1,04	512,0	3,22	16,76
RGT= 32/90	-20	-4	799,9	2732	688,4	1,39	4,73	1,19	577,1	3,45	21,70
liquid temp	-15	5	998,0	3408	858,9	1,55	5,28	1,33	645,1	3,69	27,26
Tliq= 45/113	-5	23	1472,4	5029	1267,2	1,81	6,17	1,56	814,6	4,20	40,93
[°C / °F]	-40	-40	-44,6	-152	-38,4	-0,32	-1,10	-0,28	138,5	2,35	-1,37
cond. pressure	-35	-31	125,3	428	107,8	0,45	1,53	0,39	279,5	2,61	3,87
pc= 55/131	-30	-22	291,9	997	251,2	0,73	2,51	0,63	397,5	2,87	9,07
return gas temp	-25	-13	460,3	1572	396,2	0,92	3,15	0,79	498,8	3,14	14,39
RGT= 32/90	-20	-4	635,4	2170	546,8	1,08	3,68	0,93	589,4	3,43	19,99
liquid temp	-15	5	822,0	2807	707,4	1,22	4,16	1,05	675,6	3,72	26,07
Tliq= 55/131	-5	23	1249,5	4267	1075,4	1,45	4,97	1,25	858,8	4,34	40,44