

## Model

Designation	<b>SC15GHH</b>	220-240V/50Hz 1~ 220-240V/60Hz 1~	Sales code:	<b>104G8572</b>
-------------	----------------	-----------------------------------	-------------	-----------------

## Compressor design

Oil type	Polyolester	Refrigerant(s)	<b>R134a</b>
Oil viscosity	22cST	Displacement	15,28cm <sup>3</sup> / 0,93cu.in
Oil quantity	449cm <sup>3</sup> / 15,2fl.oz	Compressors on pallet	80
Refr. charge - tech. limit	1300g / 45,9oz		
Free gas volume comp.	1540cm <sup>3</sup> / 52,1fl.oz		
Weight	13kg / 28,7lbs		
Motor protection	1# internal		
Winding resistance main	5,13Ω (at 25°C)		
Winding resistance aux	13,51Ω (at 25°C)		
Max. winding temp.	125°C / 257°F		
Max. discharge temp.	140°C / 284°F		



## General - Configurations with SC15GHH

	<b>Conf. 1</b>	<b>Conf. 2</b>	<b>Conf. 3</b>
Motorconfiguration	CSCR	CSCR	CSCR
Power supply (nominal)	220-240V/50Hz	220-240V/60Hz	220-240V/50Hz
Number of phases	1	1	1
Voltage range	198-254V	198-254V	198-254V
Approvals	VDE	VDE	VDE
Starting torque	HST	HST	HST
Note	- / -		

## Applications with SC15GHH

	<b>Conf. 1</b>	<b>Conf. 2</b>	<b>Conf. 3</b>
Refrigerant	R134a	R134a	R513A
Application	HBP	HBP	HBP
System cooling	oil cooled	oil cooled	oil cooled
Hot gas defrost	OK	OK	OK
Long interval pull down	OK	OK	OK

## Electrical data - Configurations with SC15GHH

	<b>Conf. 1</b>	<b>Conf. 2</b>	<b>Conf. 3</b>
Starting device type	relay	relay	relay
Run capacitor	10μF	10μF	10μF
Start capacitor	80μF	80μF	80μF
LRA (locked rotor amps / 4s)	16,2A	15,6A	16,2A
RLA (rated load amps / 1s)	3,1A	2,8A	3,1A
Cut in current	16,2A	15,6A	16,2A

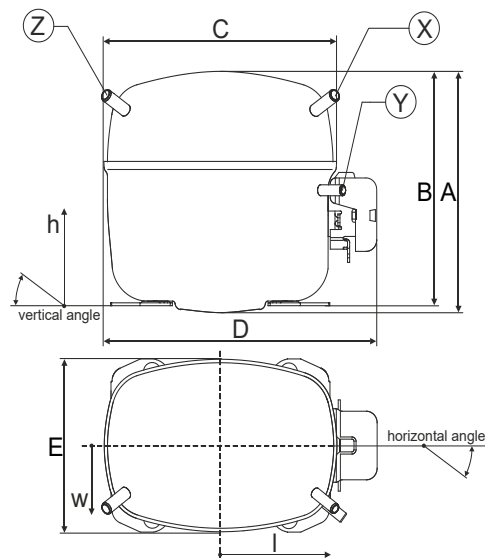
## Model

Designation	<b>SC15GHH</b>	220-240V/50Hz 1~ 220-240V/60Hz 1~	Sales code:	<b>104G8572</b>
-------------	----------------	-----------------------------------	-------------	-----------------

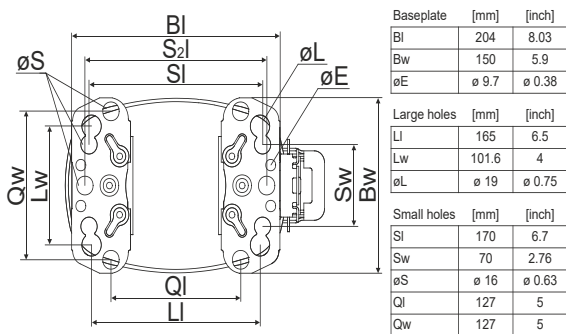
## Compressor dimensions

<b>Housing</b>	A Height	209mm / 8,23in
	B Height	203mm / 7,99in
	C Length shell	218mm / 8,58in
	D Length w. cover	255mm / 10,04in
	E Width	151mm / 5,94in

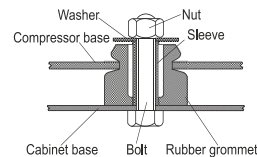
<b>Connectors</b>		<b>Suction</b>	<b>Discharge</b>	<b>Process</b>
		<b>X</b>	<b>Y</b>	<b>Z</b>
Diameter	[mm]	øi 10,11-10,29	øi 8,11-8,29	øi 6,11-6,29
	(i:inside, o:outside) [in]	øi 0,4-0,41	øi 0,32-0,33	øi 0,24-0,25
Material		copper	copper	copper
Horizontal angle	±2°	37°	37°	143°
Vertical angle	±2°	30°	0°	150°
Position l/h/w	[mm]	107/183/55	115/100/63	-107/183/55
	[in]	4,2/7,2/2,2	4,5/3,9/2,5	-4,2/7,2/2,2
Straight tube l.	[mm]	12	12	12
	[in]	0,5	0,5	0,5



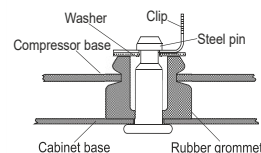
## Compressor fixation



### Bolt joint



### Snap-on



## Mounting accessories

	one comp.	multi pack
Bolt joint   M6   ø16mm	118-1917	118-1918
Bolt joint   ø1/4"   ø16mm	118-1946	
Bolt joint   ø1/4"   ø19mm	118-1949	
Snap-on   ø7,3   ø16mm	118-1947	118-1919

## Application notes

Provision for PE Grounding is located at the PE Stamp on the compressor

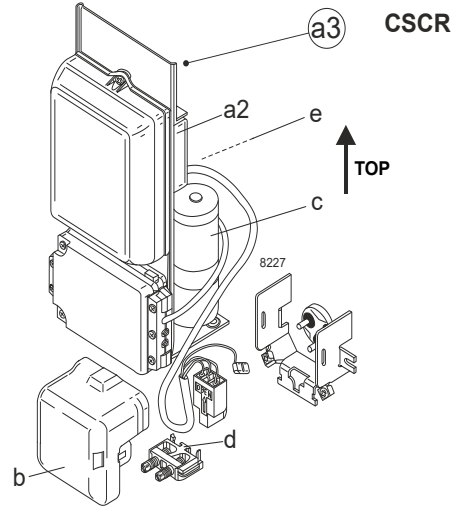
## Model

Designation	<b>SC15GHH</b>	<b>220-240V/50Hz</b>	Conf. 1	Sales code:	<b>104G8572</b>
-------------	----------------	----------------------	---------	-------------	-----------------

## Configuration

Motorconfiguration	CSCR
Power supply (nominal)	220-240V/50Hz 1~
Refrigerant	R134a
Application	HBP
Voltage range	198-254V
Starting torque	HST
Approvals	VDE

## Electrical accessories / wiring diagram

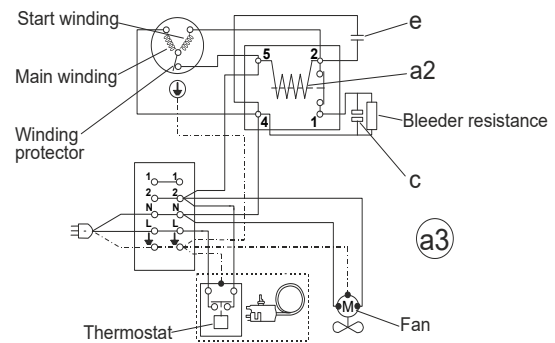


## Ambient/ machine room temperatures minimum /maximum

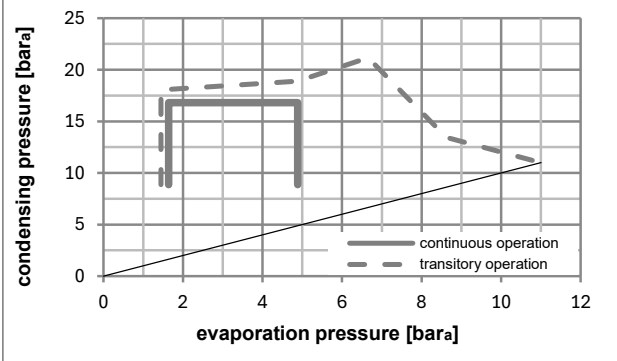
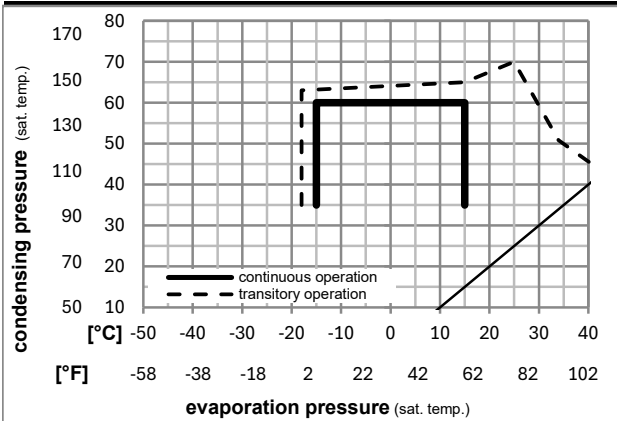
Ambient temperature range: 10 - 43°C / 50 - 110°F

Machine room temperature range: 10 - 48°C / 50 - 119°F

Compressor cooling: fan 1,5m/s



## Operation pressure range



## Components

a3	SC starter kit (550mm)	117-7027
b	plastic cover	103N2009
d	cord relief	103N1004

## Alternative components

a3	SC starter kit (1000mm)	117-7040
a3	SC starter kit (650mm)	117-7046
c	start capacitor (80µF)	117U5373
e	run capacitor (10µF, 6.3mm)	117-7112

### Model

Designation **SC15GHH** **220-240V/50Hz** Conf. 1 Sales code: **104G8572**

### Optimization + standard conditions

R134a, 220V/50Hz, CSCR, fan 1,5m/s, VDE

Evaporating pressure (saturation temperature)					Condensing pressure (saturation temperature)						Power consumption			ASHRAE HBP
Return gas temp.					Liquid temp.						Current consumption		Ref. mass flow	
pe	pc	RGT	Tliq	[W]	[Btu/h]	[kcal/h]	COP	EER	[kcal/Wh]	P1	I	m		
[°C]	[°C]	[°C]	[°C]	[W]	[Btu/h]	[kcal/h]	[W/W]	[Btu/Wh]	[kcal/Wh]	[W]	[A]	[kg/h]		
7	54	35	46	1383,1	4723	1190,3	2,66	9,07	2,29	520,8	2,46	30,68	ASHRAE HBP	
[°F]	45	130	95	115										
5	55	32	55	1134,9	3876	976,7	2,25	7,68	1,93	504,8	2,39	27,97	cecomaf HBP	
[°F]	41	131	90	131										
5	50	20	50	1168,7	3991	1005,8	2,40	8,19	2,06	487,2	2,31	29,45	EN12900 HBP	
[°F]	41	122	68	122										
-7	54	35	46	740,5	2529	637,3	1,84	6,28	1,58	402,5	1,94	16,16	ASHRAE MBP	
[°F]	20	130	95	115										
-10	55	32	55	570,1	1947	490,6	1,51	5,16	1,30	377,0	1,84	13,79	cecomaf MBP	
[°F]	14	131	90	131										
-10	45	20	45	636,4	2173	547,7	1,74	5,94	1,50	366,0	1,79	14,90	EN12900 MBP	
[°F]	14	113	68	113										

### Performance tables

R134a, 220V/50Hz, CSCR, fan 1,5m/s, VDE

	pe		Cooling capacity			COP			EER			P1	I	m
	[°C]	[°F]	[W]	[Btu/h]	[kcal/h]	[W/W]	[Btu/Wh]	[kcal/Wh]	[W]	[A]	[kg/h]			
[°C / °F]	-15	5	489,2	1671	421,0	1,44	4,91	1,24	340,4	1,69	10,66			
cond. pressure	-10	14	660,2	2255	568,2	1,80	6,16	1,55	366,0	1,79	14,45			
pc= 45/113	-5	23	852,0	2910	733,2	2,14	7,30	1,84	398,6	1,93	18,73			
return gas temp.	0	32	1073,0	3665	923,5	2,47	8,44	2,13	434,0	2,08	23,73			
RGT= 32/90	5	41	1332,1	4549	1146,4	2,85	9,73	2,45	467,5	2,23	29,66			
liquid temp	10	50	1637,9	5594	1409,6	3,31	11,30	2,85	494,8	2,35	36,75			
Tliq= 45/113	15	59	1998,9	6827	1720,3	3,91	13,35	3,36	511,4	2,42	45,28			
[°C / °F]	-15	5	434,9	1485	374,3	1,26	4,30	1,08	345,3	1,71	10,47			
cond. pressure	-10	14	570,1	1947	490,6	1,51	5,16	1,30	377,0	1,84	13,79			
pc= 55/131	-5	23	726,1	2480	624,9	1,74	5,94	1,50	417,1	2,01	17,65			
return gas temp.	0	32	911,4	3113	784,4	1,98	6,75	1,70	461,2	2,20	22,29			
RGT= 32/90	5	41	1134,9	3876	976,7	2,25	7,68	1,93	504,8	2,39	27,97			
liquid temp	10	50	1405,0	4798	1209,2	2,59	8,83	2,22	543,5	2,56	34,93			
Tliq= 55/131	15	59	1730,6	5910	1489,4	3,02	10,32	2,60	572,8	2,70	43,47			

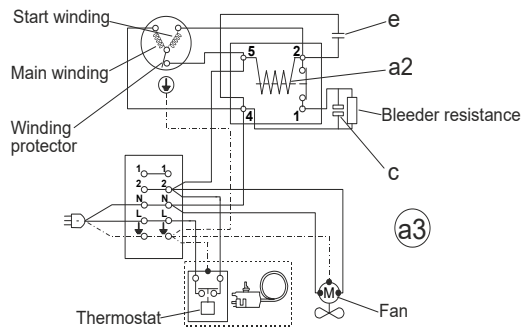
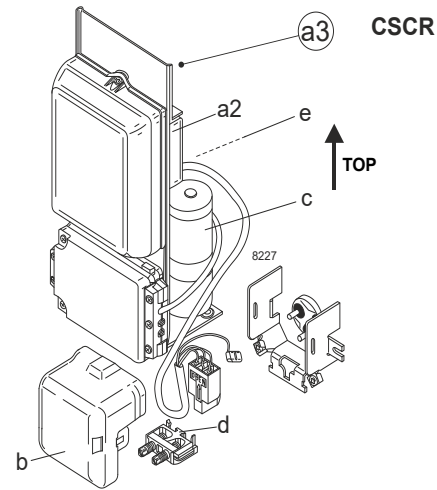
### Model

Designation	<b>SC15GHH</b>	<b>220-240V/60Hz</b>	<b>Conf. 2</b>	Sales code:	<b>104G8572</b>
-------------	----------------	----------------------	----------------	-------------	-----------------

### Configuration

Motorconfiguration	CSCR
Power supply (nominal)	220-240V/60Hz 1~
Refrigerant	R134a
Application	HBP
Voltage range	198-254V
Starting torque	HST
Approvals	VDE

### Electrical accessories / wiring diagram



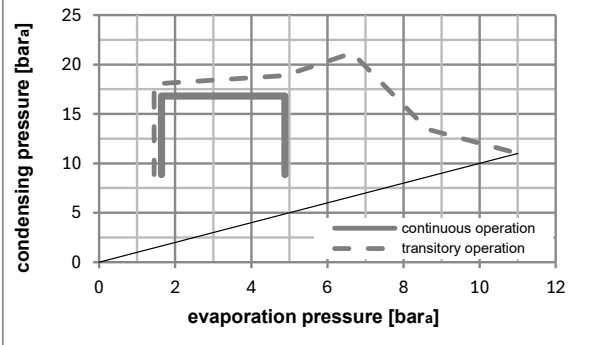
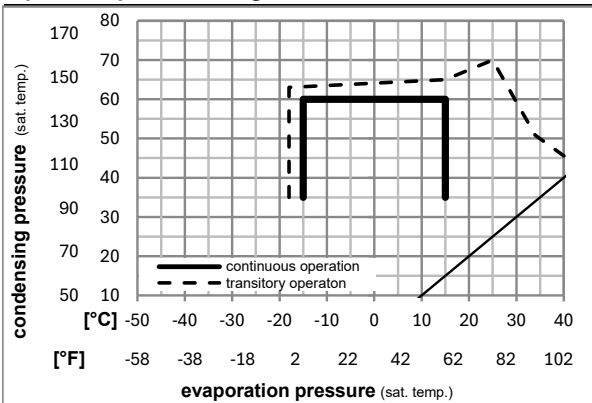
### Ambient/ machine room temperatures minimum /maximum

Ambient temperature range: 10 - 43°C / 50 - 110°F

Machine room temperature range: 10 - 48°C / 50 - 119°F

Compressor cooling: fan 1,5m/s

### Operation pressure range



### Components

a3	SC starter kit (550mm)	117-7027
b	plastic cover	103N2009
d	cord relief	103N1004

### Alternative components

a3	SC starter kit (1000mm)	117-7040
a3	SC starter kit (650mm)	117-7046
c	start capacitor (80µF)	117U5373
e	run capacitor (10µF, 6.3mm)	117-7112

## Model

Designation	<b>SC15GHH</b>	<b>220-240V/60Hz</b>	<b>Conf. 2</b>	Sales code:	<b>104G8572</b>
-------------	----------------	----------------------	----------------	-------------	-----------------

## Optimization + standard conditions

R134a, 220V/60Hz, CSCR, fan 1,5m/s, VDE

Evaporating pressure (saturation temperature)					Condensing pressure (saturation temperature)						Power consumption			ASHRAE HBP
Return gas temp.				Liquid temp.		Cooling capacity	COP	EER	P1	Current consumption		Ref. mass flow		
pe	pc	RGT	Tliq	[W]	[Btu/h]					[kcal/h]	[W/W]		[Btu/Wh]	
[°C]	[°C]	[°C]	[°C]	[W]	[Btu/h]	[kcal/h]	[W/W]	[Btu/Wh]	[kcal/Wh]	[W]	[A]	[kg/h]		
[°C]	7,2	54	35	46	1661,4	5674	1429,8	2,73	9,31	2,35	609,6	2,75	36,86	ASHRAE HBP
[°F]	45	130	95	115										
[°C]	5	55	32	55	1363,2	4656	1173,2	2,31	7,88	1,99	590,5	2,67	33,59	cecomaf HBP
[°F]	41	131	90	131										
[°C]	5	50	20	50	1403,7	4794	1208,0	2,46	8,42	2,12	569,5	2,57	35,37	EN12900 HBP
[°F]	41	122	68	122										
[°C]	-7	54	35	46	889,1	3036	765,2	1,90	6,49	1,64	467,7	2,13	19,40	ASHRAE MBP
[°F]	20	130	95	115										
[°C]	-10	55	32	55	684,5	2338	589,1	1,57	5,35	1,35	437,0	2,00	16,55	cecomaf MBP
[°F]	14	131	90	131										
[°C]	-10	45	20	45	763,9	2609	657,4	1,80	6,16	1,55	423,7	1,94	17,88	EN12900 MBP
[°F]	14	113	68	113										

## Performance tables

R134a, 220V/60Hz, CSCR, fan 1,5m/s, VDE

	pe		Cooling capacity			COP	EER		P1	I	m
	[°C]	[°F]	[W]	[Btu/h]	[kcal/h]	[W/W]	[Btu/Wh]	[kcal/Wh]	[W]	[A]	[kg/h]
[°C / °F]	-15	5	587,1	2005	505,3	1,49	5,10	1,29	392,9	1,81	12,80
cond. pressure	-10	14	792,5	2707	682,1	1,87	6,39	1,61	423,7	1,94	17,35
pc= 45/113	-5	23	1022,8	3493	880,3	2,21	7,54	1,90	463,1	2,11	22,49
return gas temp.	0	32	1288,4	4400	1108,8	2,55	8,70	2,19	505,6	2,30	28,49
RGT= 32/90	5	41	1599,8	5463	1376,8	2,93	10,01	2,52	545,8	2,47	35,62
liquid temp	10	50	1967,2	6718	1693,0	3,40	11,61	2,93	578,6	2,61	44,14
Tliq= 45/113	15	59	2401,2	8200	2066,5	4,01	13,71	3,45	598,3	2,71	54,39
[°C / °F]	-15	5	522,0	1783	449,2	1,31	4,47	1,13	398,9	1,84	12,57
cond. pressure	-10	14	684,5	2338	589,1	1,57	5,35	1,35	437,0	2,00	16,55
pc= 55/131	-5	23	871,9	2978	750,3	1,80	6,14	1,55	485,3	2,21	21,19
return gas temp	0	32	1094,6	3738	942,1	2,03	6,95	1,75	538,2	2,44	26,78
RGT= 32/90	5	41	1363,2	4656	1173,2	2,31	7,88	1,99	590,5	2,67	33,59
liquid temp	10	50	1687,9	5765	1452,7	2,65	9,05	2,28	636,8	2,87	41,96
Tliq= 55/131	15	59	2079,3	7101	1789,5	3,10	10,57	2,66	671,8	3,03	52,23

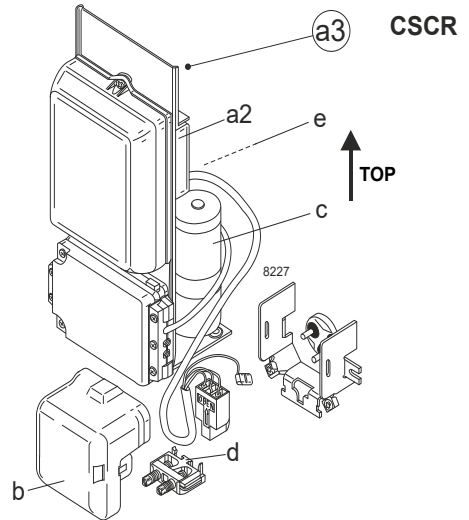
## Model

Designation	<b>SC15GHH</b>	<b>220-240V/50Hz</b>	<b>Conf. 3</b>	Sales code:	<b>104G8572</b>
-------------	----------------	----------------------	----------------	-------------	-----------------

## Configuration

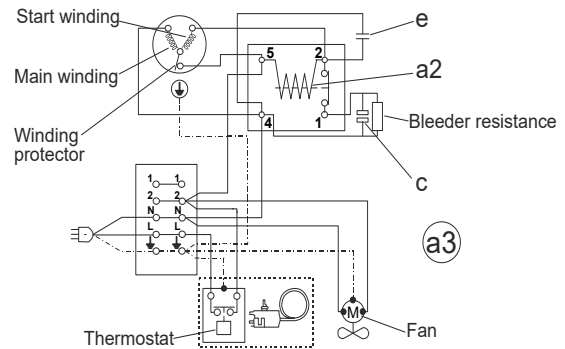
Motorconfiguration	CSCR
Power supply (nominal)	220-240V/50Hz 1~
Refrigerant	R513A
Application	HBP
Voltage range	198-254V
Starting torque	HST
Approvals	VDE

## Electrical accessories / wiring diagram

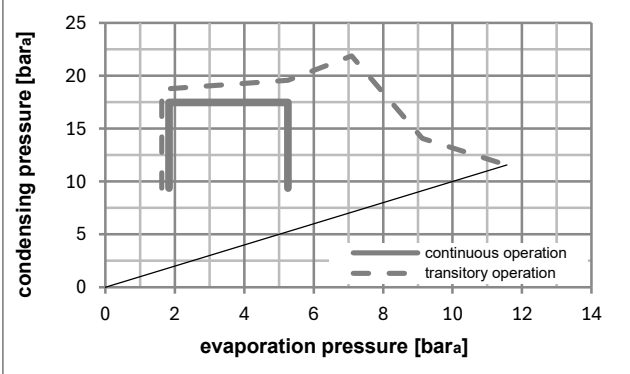
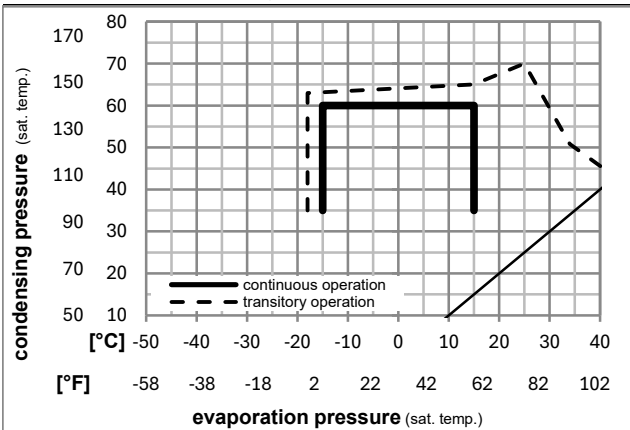


## Ambient/ machine room temperatures minimum /maximum

Ambient temperature range:	10 - 43°C / 50 - 110°F
Machine room temperature range:	10 - 48°C / 50 - 119°F
Compressor cooling:	fan 1,5m/s



## Operation pressure range



## Components

a3	SC starter kit (550mm)	117-7027
b	plastic cover	103N2009
d	cord relief	103N1004

## Alternative components

a3	SC starter kit (1000mm)	117-7040
a3	SC starter kit (650mm)	117-7046
c	start capacitor (80µF)	117U5373
e	run capacitor (10µF, 6.3mm)	117-7112

### Model

Designation	<b>SC15GHH</b>	<b>220-240V/50Hz</b>	Conf. 3	Sales code:	<b>104G8572</b>
-------------	----------------	----------------------	---------	-------------	-----------------

### Optimization + standard conditions

R513A, 220V/50Hz, CSCR, fan 1,5m/s, VDE

Evaporating pressure (saturation temperature)					Condensing pressure (saturation temperature)					Power consumption							
Return gas temp.				Liquid temp.	Cooling capacity					COP		EER		P1	Current consumption		Ref. mass flow
pe	pc	RGT	Tliq	[W]	[Btu/h]	[kcal/h]	[W/W]	[Btu/Wh]	[kcal/Wh]	[W]	[A]	[kg/h]					
[°C]	[°C]	[°C]	[°C]	[W]	[Btu/h]	[kcal/h]	[W/W]	[Btu/Wh]	[kcal/Wh]	[W]	[A]	[kg/h]					
7,2	54	35	46	1422,3	4858	1224,1	2,62	8,94	2,25	543,4	2,55	35,33	<b>ASHRAE HBP</b>				
[°F]	45	130	95	115													
5	55	32	55	1150,1	3928	989,8	2,18	7,44	1,88	527,8	2,49	32,32	<b>cecomaf HBP</b>				
[°C]																	
[°F]	41	131	90	131													
5	50	20	50	1186,8	4053	1021,4	2,33	7,96	2,01	509,3	2,41	34,03	<b>EN12900 HBP</b>				
[°C]																	
[°F]	41	122	68	122													
-7	54	35	46	779,0	2660	670,4	1,83	6,24	1,57	426,6	2,05	19,08	<b>ASHRAE MBP</b>				
[°C]																	
[°F]	20	130	95	115													
-10	55	32	55	593,0	2025	510,4	1,48	5,04	1,27	401,6	1,94	16,40	<b>cecomaf MBP</b>				
[°C]																	
[°F]	14	131	90	131													
-10	45	20	45	665,8	2274	573,0	1,71	5,85	1,47	388,8	1,89	17,65	<b>EN12900 MBP</b>				
[°C]																	
[°F]	14	113	68	113													

### Performance tables

R513A, 220V/50Hz, CSCR, fan 1,5m/s, VDE

	pe		Cooling capacity			COP		EER		P1	I	m
	[°C]	[°F]	[W]	[Btu/h]	[kcal/h]	[W/W]	[Btu/Wh]	[kcal/Wh]	[W]	[A]	[kg/h]	
[°C / °F]	-15	5	520,7	1778	448,1	1,43	4,88	1,23	364,4	1,78	12,76	
cond. pressure	-10	14	696,2	2378	599,2	1,79	6,11	1,54	388,8	1,89	17,12	
pc= 45/113	-5	23	891,0	3043	766,8	2,12	7,23	1,82	420,8	2,03	22,00	
return gas temp.	0	32	1113,8	3804	958,6	2,44	8,35	2,10	455,7	2,18	27,63	
RGT= 32/90	5	41	1373,2	4690	1181,8	2,81	9,60	2,42	488,7	2,32	34,25	
liquid temp	10	50	1677,9	5730	1444,0	3,26	11,12	2,80	515,1	2,43	42,13	
Tliq= 45/113	15	59	2036,6	6955	1752,7	3,84	13,12	3,31	530,3	2,50	51,53	
[°C / °F]	-15	5	457,2	1562	393,5	1,23	4,21	1,06	371,1	1,81	12,60	
cond. pressure	-10	14	593,0	2025	510,4	1,48	5,04	1,27	401,6	1,94	16,40	
pc= 55/131	-5	23	748,0	2555	643,7	1,70	5,79	1,46	441,0	2,11	20,78	
return gas temp	0	32	930,8	3179	801,1	1,92	6,56	1,65	484,7	2,30	25,99	
RGT= 32/90	5	41	1150,1	3928	989,8	2,18	7,44	1,88	527,8	2,49	32,32	
liquid temp	10	50	1414,7	4831	1217,5	2,50	8,54	2,15	565,7	2,65	40,05	
Tliq= 55/131	15	59	1733,0	5919	1491,5	2,92	9,97	2,51	593,7	2,77	49,49	