

Model

Designation	SCE15CNLX	220-240V/50Hz 1~	Sales code:	104H8548
-------------	------------------	------------------	-------------	-----------------

Compressor design

Oil type	Polyolester	Refrigerant(s)	R290
Oil viscosity	32cSt	Displacement	15,28cm ³ / 0,93cu.in
Oil quantity	550cm ³ / 18,6fl.oz	Compressors on pallet	80
Refr. charge - tech. limit	550g / 19,4oz		
Free gas volume comp.	1460cm ³ / 49,4fl.oz		
Weight	14,2kg / 31,3lbs		
Motor protection	external		
Winding resistance main	4,62Ω (at 25°C)		
Winding resistance aux	15,94Ω (at 25°C)		
Max. winding temp.	125°C / 257°F		
Max. discharge temp.	140°C / 284°F		



General - Configurations with SCE15CNLX

	Conf. 1
Motorconfiguration	CSIR
Power supply (nominal)	220-240V/50Hz
Number of phases	1
Voltage range	198-254V
Approvals	VDE, CCC
Starting torque	HST
Note	Protector, relay and cover are included and pre-assembled to compressor.

Applications with SCE15CNLX

	Conf. 1
Refrigerant	R290
Application	LBP
System cooling	fan 3m/s
Hot gas defrost	OK
Long interval pull down	-/-

Electrical data - Configurations with SCE15CNLX

	Conf. 1
Starting device type	relay
Run capacitor	-/-
Start capacitor	80μF
LRA (locked rotor amps / 4s/ U(N))	15,87A
RLA (rated load amps / 1s/ U(N))	3,01A
Cut in current (U(N))	15,87A

Model

Designation

SCE15CNLX

220-240V/50Hz 1~

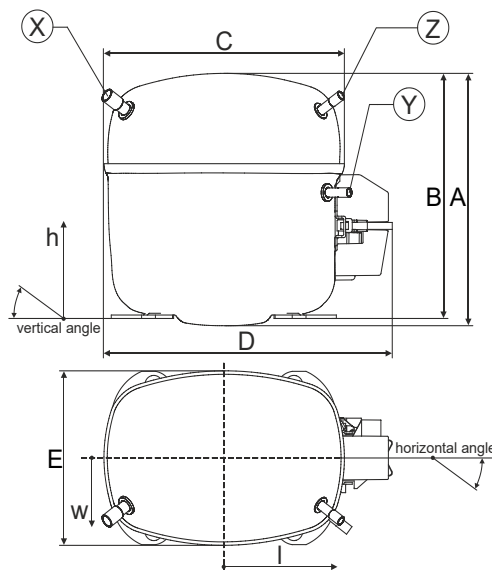
Sales code:

104H8548

Compressor dimensions

Housing	A Height	219mm / 8,62in
	B Height	213mm / 8,39in
	C Length shell	218mm / 8,58in
	D Length w. cover	255mm / 10,04in
	E Width	151mm / 5,94in

Connectors	Suction		Discharge		Process	
	X	Y	Z	X	Y	Z
Diameter [mm]	øi 10,11-10,29	øi 6,11-6,29	øi 6,11-6,29	øi 10,11-10,29	øi 6,11-6,29	øi 6,11-6,29
(i:inside, o:outside) [in]	øi 0,4-0,41	øi 0,24-0,25	øi 0,24-0,25	øi 0,4-0,41	øi 0,24-0,25	øi 0,24-0,25
Material	copper	copper	copper	copper	copper	copper
Horizontal angle ±2°	37°	37°	143°	37°	37°	143°
Vertical angle ±2°	30°	0°	150°	30°	0°	150°
Position l/h/w [mm]	107/193/55	115/110/63	-107/193/55	107/193/55	115/110/63	-107/193/55
[in]	4,2/7,6/2,2	4,5/4,3/2,5	-4,2/7,6/2,2	4,2/7,6/2,2	4,5/4,3/2,5	-4,2/7,6/2,2
Straight tube l. [mm]	12	12	12	12	12	12
[in]	0,5	0,5	0,5	0,5	0,5	0,5



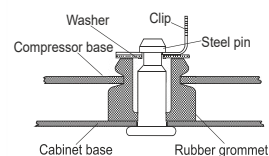
Compressor fixation

Baseplate	[mm]	[inch]
BI	204	8.03
Bw	150	5.9
øE	ø 9.7	ø 0.38
Large holes	[mm]	[inch]
LI	165	6.5
Lw	101.6	4
øL	ø 19	ø 0.75
Small holes	[mm]	[inch]
SI	170	6.7
Sw	70	2.76
øS	ø 16	ø 0.63
QI	127	5
Qw	127	5

Bolt joint



Snap-on



Mounting accessories

Mounting accessories	one comp.	multi pack
Bolt joint M6 ø16mm	118-1917	118-1918
Bolt joint ø1/4" ø16mm	118-1946	
Bolt joint ø1/4" ø19mm	118-1949	
Snap-on ø7,3 ø16mm	118-1947	118-1919

Application notes

Provision for PE Grounding is located at the PE Stamp on the compressor

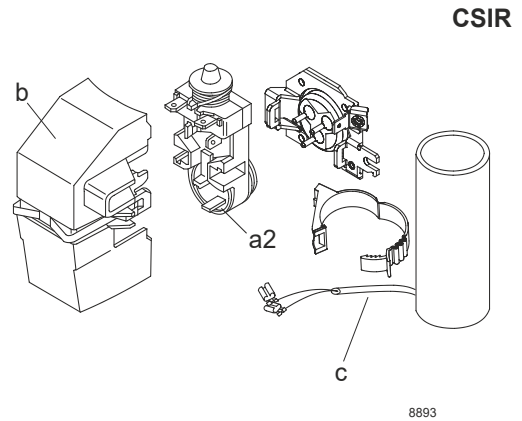
Model

Designation **SCE15CNLX** **220-240V/50Hz** Conf. 1 Sales code: **104H8548**

Configuration

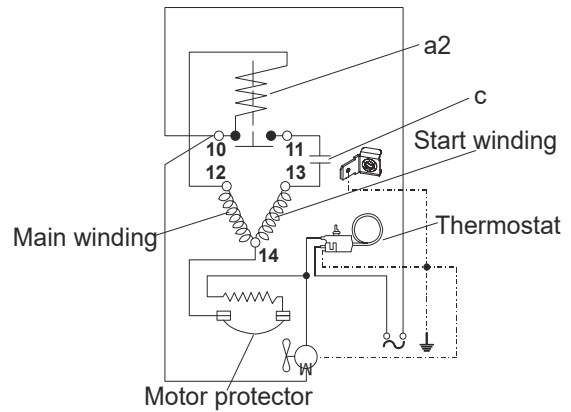
Motor configuration CSIR
 Power supply (nominal) 220-240V/50Hz 1~
 Refrigerant R290
 Application LBP
 Voltage range 198-254V
 Starting torque HST
 Approvals VDE
 CCC

Electrical accessories / wiring diagram

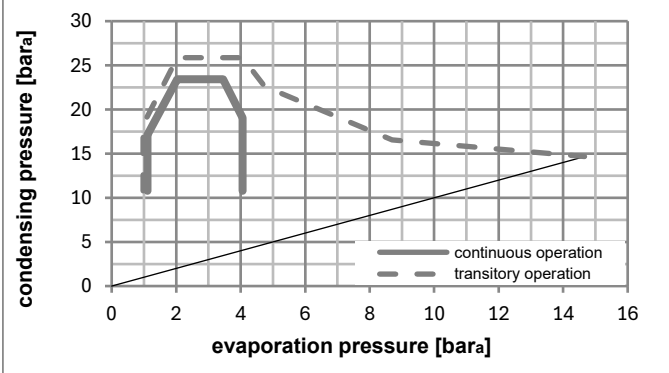
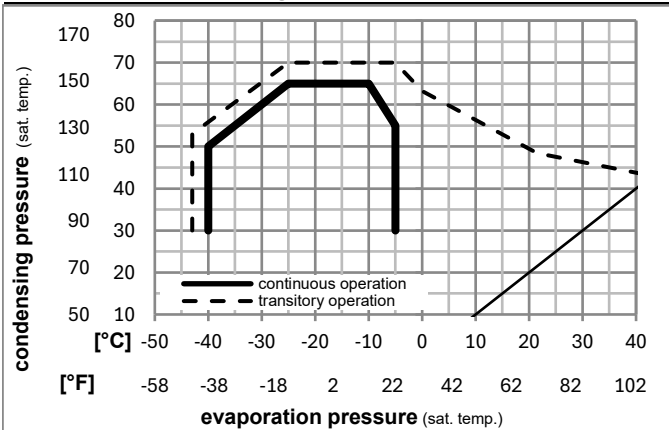


Ambient/ machine room temperatures minimum /maximum

Ambient temperature range: 10 - 43°C / 50 - 110°F
 Machine room temperature range: 10 - 48°C / 50 - 119°F
 Compressor cooling: fan 3m/s



Operation pressure range



Components (relay (a2)+ cover (b): pre-assembled)

a2	assy. relay + ext. protector (T1132)	117U7403
c	start capacitor (80µF)	117U5017
d	cord relief	103N1004
b	plastic cover + clamp	117U1033

Noise emission

Operation pressures:	pe: -25°C / -13°F
	pc: 45°C / 113°F
Motor speed appr.:	2900rpm
Lw(A):	56dB(A)

Model

Designation **SCE15CNLX 220-240V/50Hz** Conf. 1 Sales code: **104H8548**

Optimization + standard conditions

R290, 230V/50Hz, CSIR, fan 3m/s, VDE, CCC

	Evaporating pressure (saturation temperature)				Cooling capacity			COP	EER	P1	Power consumption		ASHRAE LBP	
	pe	pc	RGT	Tliq	[W]	[Btu/h]	[kcal/h]				I	m		
	[°C]	[°F]	[°C]	[°F]	[W]	[Btu/h]	[kcal/h]	[W/W]	[Btu/Wh]	[kcal/Wh]	[W]	[A]	[kg/h]	
	-23	54	32	32	665,7	2273	572,9	1,52	5,20	1,31	437,2	2,62	6,74	ASHRAE LBP
	-10	130	90	90										
	-25	55	32	55	490,7	1676	422,3	1,17	4,00	1,01	418,5	2,55	6,11	cecomaf LBP
	-13	131	90	131										
	-35	40	20	40	357,4	1221	307,6	1,16	3,97	1,00	307,5	2,28	4,08	EN12900 LBP
	-31	104	68	104										
	-23	49	4,4	49	549,4	1876	472,8	1,28	4,37	1,10	429,0	2,60	7,61	ARI540 LBP
	-10	120	40	120										
	-23	41	32	32	738,3	2521	635,4	1,80	6,13	1,55	411,1	2,54	7,48	AHAM LBP
	-10	105	90	90										
	-35	45	32	45	333,9	1140	287,3	1,08	3,67	0,93	310,4	2,27	3,74	opt
	-31	113	90	113										

Performance tables

R290, 230V/50Hz, CSIR, fan 3m/s, VDE, CCC

	pe		Cooling capacity			COP	EER	P1	I	m	
	[°C]	[°F]	[W]	[Btu/h]	[kcal/h]						
[°C / °F]	-40	-40	240,8	822	207,2	0,90	3,08	0,78	266,6	2,19	2,69
cond. pressure	-35	-31	333,9	1140	287,3	1,08	3,67	0,93	310,4	2,27	3,74
pc= 45/113	-30	-22	450,5	1538	387,7	1,26	4,31	1,09	357,3	2,39	5,06
return gas temp.	-25	-13	591,9	2021	509,4	1,46	4,99	1,26	405,4	2,53	6,68
RGT= 32/90	-20	-4	759,5	2594	653,6	1,68	5,72	1,44	453,3	2,68	8,60
liquid temp	-15	5	954,4	3260	821,4	1,91	6,53	1,65	499,1	2,85	10,86
Tliq= 45/113	-5	23	1431,7	4890	1232,1	2,48	8,46	2,13	577,9	3,15	16,48
[°C / °F]	-40	-40	168,7	576	145,2	0,66	2,25	0,57	256,4	2,04	2,08
cond. pressure	-35	-31	256,6	876	220,9	0,84	2,86	0,72	306,6	2,18	3,17
pc= 55/131	-30	-22	363,6	1242	312,9	1,01	3,44	0,87	361,1	2,35	4,51
return gas temp	-25	-13	490,7	1676	422,3	1,17	4,00	1,01	418,5	2,55	6,11
RGT= 32/90	-20	-4	639,4	2183	550,2	1,34	4,58	1,15	476,9	2,76	8,00
liquid temp	-15	5	810,8	2769	697,8	1,52	5,18	1,31	534,6	2,99	10,19
Tliq= 55/131	-5	23	1227,2	4191	1056,1	1,91	6,53	1,65	641,6	3,43	15,63