

Model

Designation	SCE15CNLX	208-230V/60Hz 1~	Sales code:	104H8577
-------------	------------------	------------------	-------------	-----------------

Compressor design

Oil type	Polyolester	Refrigerant(s)	R290
Oil viscosity	32cST	Displacement	15,28cm ³ / 0,93cu.in
Oil quantity	550cm ³ / 18,6fl.oz	Compressors on pallet	80
Refr. charge - tech. limit	450g / 15,9oz		
Free gas volume comp.	1460cm ³ / 49,4fl.oz		
Weight	14,2kg / 31,3lbs		
Motor protection	external		
Winding resistance main	3,44Ω (at 25°C)		
Winding resistance aux	9,4Ω (at 25°C)		
Max. winding temp.	125°C / 257°F		
Max. discharge temp.	135°C / 275°F		



General - Configurations with SCE15CNLX

Conf. 1

Motorconfiguration	CSCR
Power supply (nominal)	208-230V/60Hz
Number of phases	1
Voltage range	187-253V
Approvals	UL
Starting torque	HST
Note	Protector and cover are included and pre-assembled to compressor.

Applications with SCE15CNLX

Conf. 1

Refrigerant	R290
Application	LBP
System cooling	fan 3m/s
Hot gas defrost	OK
Long interval pull down	-/-

Electrical data - Configurations with SCE15CNLX

Conf. 1

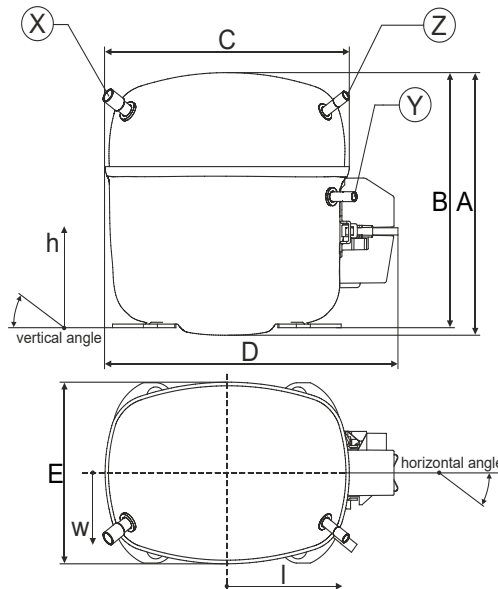
Starting device type	relay
Run capacitor	10μF
Start capacitor	80μF
LRA (locked rotor amps / 4s/ U(N))	19,13A
RLA (rated load amps / 1s/ U(N))	2,2A
Cut in current (U(N))	19,13A

Model

Designation **SCE15CNLX** 208-230V/60Hz 1~ Sales code: **104H8577**

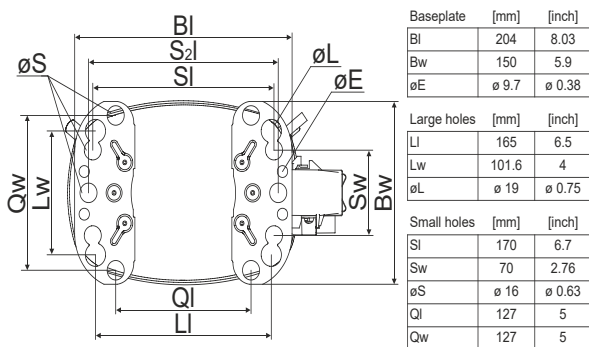
Compressor dimensions

Housing	A Height	219mm / 8,62in
	B Height	213mm / 8,39in
	C Length shell	218mm / 8,58in
	D Length w. cover	255mm / 10,04in
	E Width	151mm / 5,94in

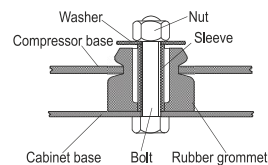


Connectors	Suction	Discharge	Process
	X	Y	Z
Diameter [mm]	øi 9,54-9,72	øi 6,41-6,59	øi 6,41-6,59
(i:inside, o:outside) [in]	øi 0,38-0,38	øi 0,25-0,26	øi 0,25-0,26
Material	copper	copper	copper
Horizontal angle ±2°	37°	37°	143°
Vertical angle ±2°	30°	0°	150°
Position l/h/w [mm]	107/193/55	115/110/63	-107/193/55
[in]	4,2/7,6/2,2	4,5/4,3/2,5	-4,2/7,6/2,2
Straight tube l. [mm]	12	12	12
[in]	0,5	0,5	0,5

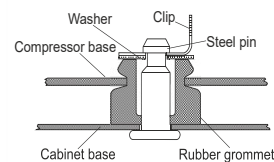
Compressor fixation



Bolt joint



Snap-on



Mounting accessories	one comp.	multi pack
Bolt joint M6 ø16mm	118-1917	118-1918
Bolt joint ø1/4" ø16mm	118-1946	
Bolt joint ø1/4" ø19mm	118-1949	
Snap-on ø7,3 ø16mm	118-1947	118-1919

Application notes

Provision for PE Grounding is located at the PE Stamp on the compressor

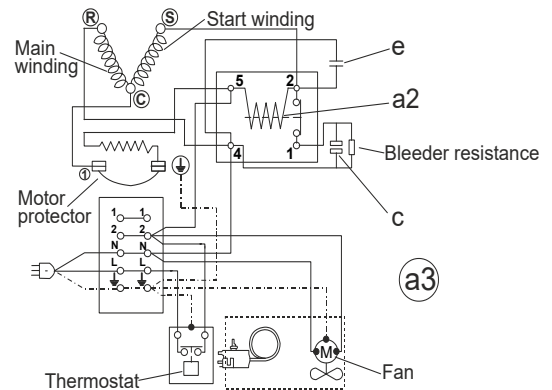
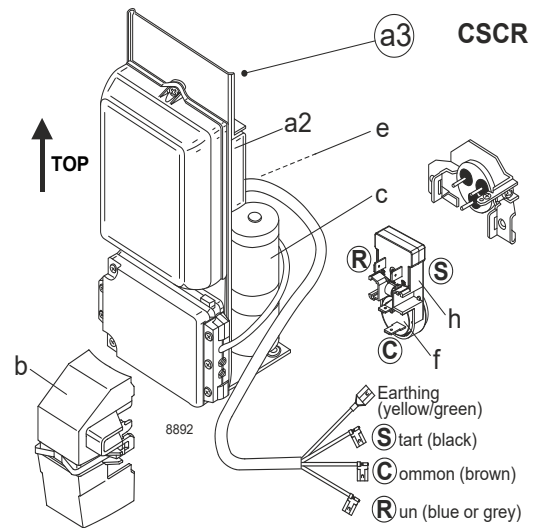
Model

Designation **SCE15CNLX** **208-230V/60Hz** Conf. 1 Sales code: **104H8577**

Configuration

Motorconfiguration CSCR
 Power supply (nominal) 208-230V/60Hz 1~
 Refrigerant R290
 Application LBP
 Voltage range 187-253V
 Starting torque HST
 Approvals UL

Electrical accessories / wiring diagram



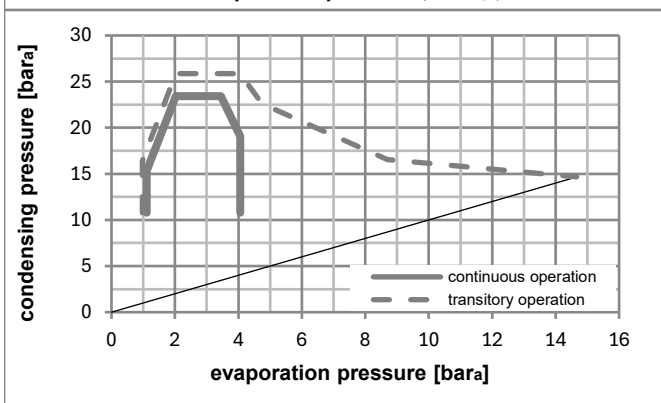
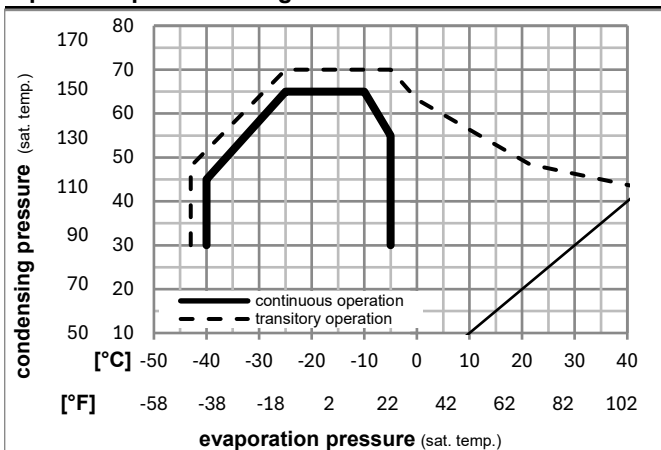
Ambient/ machine room temperatures minimum /maximum

Ambient temperature range: 10 - 43°C / 50 - 110°F

Machine room temperature range: 10 - 48°C / 50 - 119°F

Compressor cooling: fan 3m/s

Operation pressure range



Components (protector + ~holder + cover: pre assembled)

a3	SC starter kit (550mm)	117-7809
f / h	motor protector assy. (T1132)	117U8004
b	plastic cover	117U1021

Alternative comp. (protector + ~holder + cover: pre assemb.)

a2	potential relay (RVA 2AI3R A91)	117-7602
e	run capacitor (10µF, 6.3mm)	117-7121
c	start capacitor (80µF)	117U5373
f / h	motor protector assy. (T1132)	117U8004
b	plastic cover	117U1021

Noise emission

Operation pressures:	pe: -25°C / -13°F
	pc: 45°C / 113°F
Motor speed appr.:	3500rpm
Lw(A):	57dB(A)

Model

Designation **SCE15CNLX 208-230V/60Hz** Conf. 1 Sales code: **104H8577**

Optimization + standard conditions

R290, 230V/60Hz, CSCR, fan 3m/s, UL

	Evaporating pressure (saturation temperature)				Condensing pressure (saturation temperature)			Return gas temp.			Liquid temp.			Cooling capacity			COP	EER	Power consumption			Ref. mass flow
	pe	pc	RGT	Tliq	[W]	[Btu/h]	[kcal/h]	[W/W]	[Btu/Wh]	[kcal/Wh]	P1	I	m	[W]	[A]	[kg/h]						
[°C]	-23	54	32	32	766,5	2618	659,6	1,63	5,58	1,41	469,1	2,02	7,76								ASHRAE LBP	
[°F]	-10	130	90	90																		
[°C]	-25	55	32	55	553,3	1890	476,2	1,25	4,28	1,08	441,3	1,90	6,89								cecomaf LBP	
[°F]	-13	131	90	131																		
[°C]	-35	40	20	40	415,7	1420	357,7	1,22	4,15	1,05	341,9	1,49	4,75								EN12900 LBP	
[°F]	-31	104	68	104																		
[°C]	-23	49	4,4	49	648,9	2216	558,5	1,36	4,66	1,17	475,8	2,06	8,99								ARI540 LBP	
[°F]	-10	120	40	120																		
[°C]	-23	41	32	32	913,3	3119	786,0	1,94	6,62	1,67	471,0	2,02	9,25								AHAM LBP	
[°F]	-10	105	90	90																		
[°C]	-35	45	32	45	350,5	1197	301,7	1,09	3,71	0,93	323,0	1,44	3,93								opt	
[°F]	-31	113	90	113																		

Performance tables

R290, 230V/60Hz, CSCR, fan 3m/s, UL

	pe		Cooling capacity			COP	EER		P1	I	m
	[°C]	[°F]	[W]	[Btu/h]	[kcal/h]	[W/W]	[Btu/Wh]	[kcal/Wh]	[W]	[A]	[kg/h]
[°C / °F]	-40	-40	194,0	663	167,0	0,79	2,71	0,68	244,1	1,14	2,17
cond. pressure	-34	-30	368,8	1259	317,4	1,11	3,80	0,96	331,3	1,47	4,13
pc= 45/113	-29	-20	562,6	1921	484,2	1,38	4,71	1,19	408,0	1,77	6,33
return gas temp.	-23	-10	780,4	2665	671,6	1,64	5,60	1,41	476,1	2,05	8,81
RGT= 32/90	-21	-5	899,8	3073	774,4	1,77	6,06	1,53	507,3	2,18	10,18
liquid temp	-15	5	1162,7	3971	1000,6	2,06	7,02	1,77	565,3	2,43	13,23
Tliq= 45/113	-5	23	1730,4	5910	1489,2	2,63	8,97	2,26	658,7	2,84	19,92
[°C / °F]	-40	-40	33,9	116	29,2	0,23	0,78	0,20	148,0	0,77	0,42
cond. pressure	-34	-30	214,6	733	184,7	0,80	2,73	0,69	268,4	1,23	2,65
pc= 55/131	-29	-20	407,9	1393	351,0	1,09	3,72	0,94	374,6	1,64	5,06
return gas temp	-23	-10	618,7	2113	532,4	1,32	4,51	1,14	468,1	2,01	7,71
RGT= 32/90	-21	-5	732,2	2501	630,1	1,43	4,90	1,23	510,6	2,19	9,15
liquid temp	-15	5	978,5	3342	842,1	1,66	5,68	1,43	588,2	2,51	12,30
Tliq= 55/131	-5	23	1500,1	5123	1291,0	2,12	7,24	1,83	707,1	3,03	19,11