

## Model

|             |                  |                  |             |                 |
|-------------|------------------|------------------|-------------|-----------------|
| Designation | <b>SCE15CNLX</b> | 208-230V/60Hz 1~ | Sales code: | <b>104H8588</b> |
|-------------|------------------|------------------|-------------|-----------------|

## Compressor design

|                            |                                 |                       |                                  |
|----------------------------|---------------------------------|-----------------------|----------------------------------|
| Oil type                   | Polyolester                     | Refrigerant(s)        | <b>R290</b>                      |
| Oil viscosity              | 32cSt                           | Displacement          | 15,28cm <sup>3</sup> / 0,93cu.in |
| Oil quantity               | 550cm <sup>3</sup> / 18,6fl.oz  | Compressors on pallet | 80                               |
| Refr. charge - tech. limit | 450g / 15,9oz                   |                       |                                  |
| Free gas volume comp.      | 1460cm <sup>3</sup> / 49,4fl.oz |                       |                                  |
| Weight                     | 14,2kg / 31,3lbs                |                       |                                  |
| Motor protection           | external                        |                       |                                  |
| Winding resistance main    | 3,5Ω (at 25°C)                  |                       |                                  |
| Winding resistance aux     | 20,7Ω (at 25°C)                 |                       |                                  |
| Max. winding temp.         | 125°C / 257°F                   |                       |                                  |
| Max. discharge temp.       | 135°C / 275°F                   |                       |                                  |



## General - Configurations with SCE15CNLX

|                        |  |
|------------------------|--|
|                        | <b>Conf. 1</b>   |
| Motorconfiguration     | CSIR   |
| Power supply (nominal) | 208-230V/60Hz  |
| Number of phases       | 1  |
| Voltage range          | 187-253V   |
| Approvals              | UL, KC, CB   |
| Starting torque        | HST  |
| Note                   | Protector, relay and cover are included and pre-assembled to compressor. |

## Applications with SCE15CNLX

|                         |                |
|-------------------------|----------------|
|                         | <b>Conf. 1</b> |
| Refrigerant             | R290           |
| Application             | LBP            |
| System cooling          | fan 3m/s       |
| Hot gas defrost         | OK             |
| Long interval pull down | -/-            |

## Electrical data - Configurations with SCE15CNLX

|                                    |                |
|------------------------------------|----------------|
|                                    | <b>Conf. 1</b> |
| Starting device type               | relay          |
| Run capacitor                      | -/-            |
| Start capacitor                    | 60μF           |
| LRA (locked rotor amps / 4s/ U(N)) | 20,9A          |
| RLA (rated load amps / 1s/ U(N))   | 3,8A           |
| Cut in current (U(N))              | 20,9A          |

## Model

Designation

**SCE15CNLX**

208-230V/60Hz 1~

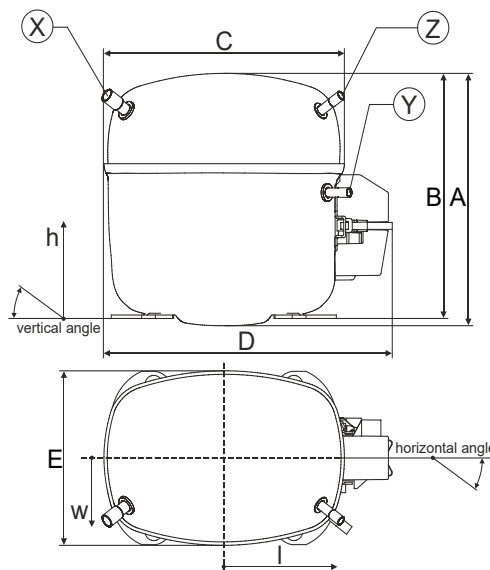
Sales code:

**104H8588**

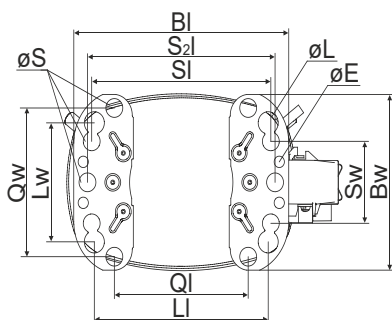
## Compressor dimensions

| Housing | A Height          | 219mm / 8,62in  |
|---------|-------------------|-----------------|
|         | B Height          | 213mm / 8,39in  |
|         | C Length shell    | 218mm / 8,58in  |
|         | D Length w. cover | 255mm / 10,04in |
|         | E Width           | 151mm / 5,94in  |

| Connectors            |      | Suction      | Discharge    | Process      |
|-----------------------|------|--------------|--------------|--------------|
|                       |      | X            | Y            | Z            |
| Diameter              | [mm] | øi 9,54-9,72 | øi 6,41-6,59 | øi 6,41-6,59 |
| (i:inside, o:outside) | [in] | øi 0,38-0,38 | øi 0,25-0,26 | øi 0,25-0,26 |
| Material              |      | copper       | copper       | copper       |
| Horizontal angle      | ±2°  | 37°          | 37°          | 143°         |
| Vertical angle        | ±2°  | 30°          | 0°           | 150°         |
| Position l/h/w        | [mm] | 107/193/55   | 115/110/63   | -107/193/55  |
|                       | [in] | 4,2/7,6/2,2  | 4,5/4,3/2,5  | -4,2/7,6/2,2 |
| Straight tube l.      | [mm] | 12           | 12           | 12           |
|                       | [in] | 0,5          | 0,5          | 0,5          |

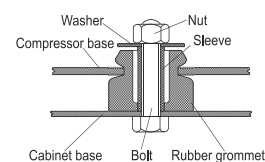


## Compressor fixation

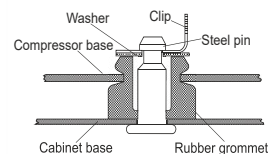


| Baseplate   | [mm]  | [inch] |
|-------------|-------|--------|
| BI          | 204   | 8.03   |
| Bw          | 150   | 5.9    |
| øE          | ø 9.7 | ø 0.38 |
| Large holes | [mm]  | [inch] |
| LI          | 165   | 6.5    |
| Lw          | 101.6 | 4      |
| øL          | ø 19  | ø 0.75 |
| Small holes | [mm]  | [inch] |
| SI          | 170   | 6.7    |
| Sw          | 70    | 2.76   |
| øS          | ø 16  | ø 0.63 |
| QI          | 127   | 5      |
| Qw          | 127   | 5      |

## Bolt joint



## Snap-on



## Mounting accessories

| Mounting accessories       | one comp. | multi pack |
|----------------------------|-----------|------------|
| Bolt joint   M6   ø16mm    | 118-1917  | 118-1918   |
| Bolt joint   ø1/4"   ø16mm | 118-1946  |            |
| Bolt joint   ø1/4"   ø19mm | 118-1949  |            |
| Snap-on   ø7,3   ø16mm     | 118-1947  | 118-1919   |

## Application notes

Provision for PE Grounding is located at the PE Stamp on the compressor

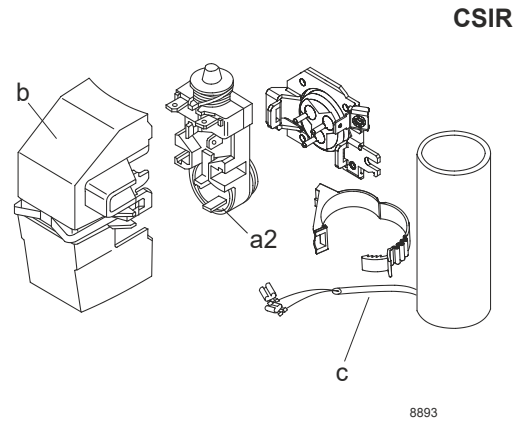
## Model

Designation **SCE15CNLX** **208-230V/60Hz** Conf. 1 Sales code: **104H8588**

## Configuration

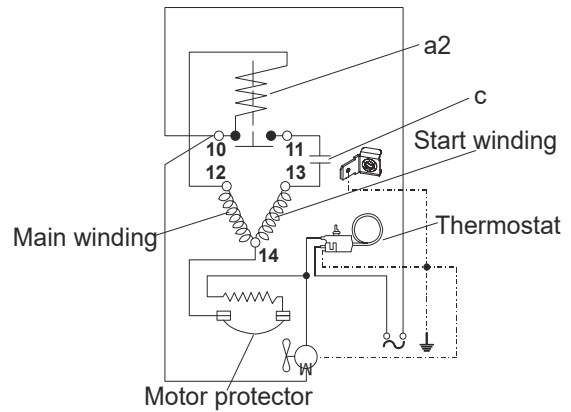
Motor configuration CSIR  
 Power supply (nominal) 208-230V/60Hz 1~  
 Refrigerant R290  
 Application LBP  
 Voltage range 187-253V  
 Starting torque HST  
 Approvals UL  
 KC  
 CB

## Electrical accessories / wiring diagram

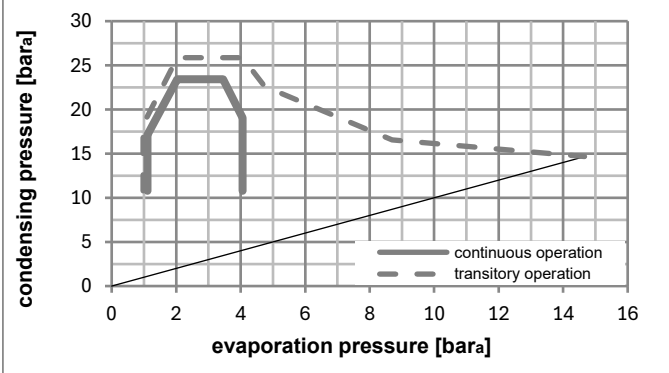
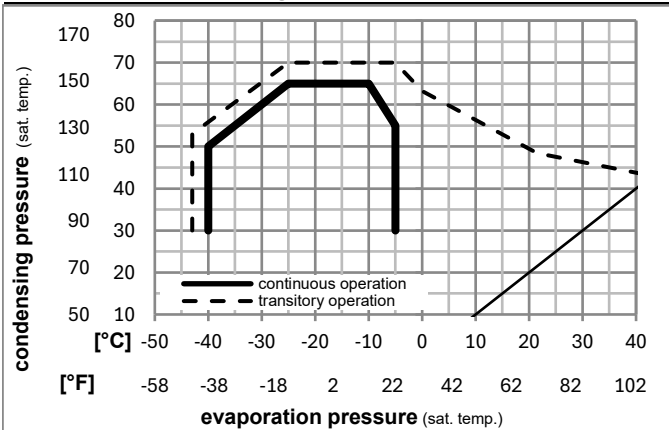


## Ambient/ machine room temperatures minimum /maximum

Ambient temperature range: 10 - 43°C / 50 - 110°F  
 Machine room temperature range: 10 - 48°C / 50 - 119°F  
 Compressor cooling: fan 3m/s



## Operation pressure range



## Components (relay (a2)+ cover (b): pre-assembled)

|    |                                       |          |
|----|---------------------------------------|----------|
| a2 | assy. relay + ext. protector (T1120)  | 117U7413 |
| c  | start capacitor (60μF, 6.3mm, 82kOhm) | 117U5076 |
| b  | plastic cover + clamp                 | 117U1021 |

## Noise emission

|                      |                   |
|----------------------|-------------------|
| Operation pressures: | pe: -25°C / -13°F |
|                      | pc: 45°C / 113°F  |
| Motor speed appr.:   | 3500rpm           |
| Lw(A):               | 57dB(A)           |

## Model

Designation **SCE15CNLX** **208-230V/60Hz** Conf. 1 Sales code: **104H8588**

## Optimization + standard conditions

R290, 230V/60Hz, CSIR, fan 3m/s, UL, KC, CB

|   | pe   | pc   | RGT  | Tliq | Cooling capacity |         |          | COP   | EER      | Power consumption |        |       |                         |             |
|---|------|------|------|------|------------------|---------|----------|-------|----------|-------------------|--------|-------|-------------------------|-------------|
|   | [°C] | [°C] | [°C] | [°C] | [W]              | [Btu/h] | [kcal/h] | [W/W] | [Btu/Wh] | [kcal/Wh]         | P1 [W] | I [A] | Ref. mass flow ṁ [kg/h] |             |
| Evaporating pressure (saturation temperature) | -23  | 54   | 32   | 32   | 762,3            | 2603    | 656,0    | 1,47  | 5,03     | 1,27              | 517,9  | 3,05  | 7,72                    | ASHRAE LBP  |
| Condensing pressure (saturation temperature)  | -10  | 130  | 90   | 90   |                  |         |          |       |          |                   |        |       |                         |             |
| Return gas temp.                              |      |      |      |      |                  |         |          |       |          |                   |        |       |                         |             |
| Liquid temp.                                  |      |      |      |      |                  |         |          |       |          |                   |        |       |                         |             |
|   | [°F] | [°F] | [°F] | [°F] |                  |         |          |       |          |                   |        |       |                         |             |
|   | -25  | 55   | 32   | 55   | 550,2            | 1879    | 473,5    | 1,13  | 3,87     | 0,98              | 485,5  | 2,95  | 6,85                    | cecomaf LBP |
|   | -13  | 131  | 90   | 131  |                  |         |          |       |          |                   |        |       |                         |             |
|   | [°F] | [°F] | [°F] | [°F] |                  |         |          |       |          |                   |        |       |                         |             |
|   | -35  | 40   | 20   | 40   | 415,2            | 1418    | 357,3    | 1,13  | 3,87     | 0,98              | 366,5  | 2,58  | 4,74                    | EN12900 LBP |
|   | -31  | 104  | 68   | 104  |                  |         |          |       |          |                   |        |       |                         |             |
|   | [°F] | [°F] | [°F] | [°F] |                  |         |          |       |          |                   |        |       |                         |             |
|   | -23  | 49   | 4,4  | 49   | 645,5            | 2204    | 555,5    | 1,23  | 4,19     | 1,05              | 526,6  | 3,05  | 8,94                    | ARI540 LBP  |
|   | -10  | 120  | 40   | 120  |                  |         |          |       |          |                   |        |       |                         |             |
|   | [°F] | [°F] | [°F] | [°F] |                  |         |          |       |          |                   |        |       |                         |             |
|   | -23  | 41   | 32   | 32   | 908,1            | 3101    | 781,5    | 1,74  | 5,93     | 1,50              | 522,8  | 3,08  | 9,20                    | AHAM LBP    |
|   | -10  | 105  | 90   | 90   |                  |         |          |       |          |                   |        |       |                         |             |
|   | [°F] | [°F] | [°F] | [°F] |                  |         |          |       |          |                   |        |       |                         |             |
|   | -35  | 45   | 32   | 45   | 350,7            | 1198    | 301,8    | 1,02  | 3,48     | 0,88              | 344,6  | 2,48  | 3,93                    | opt         |
|   | -31  | 113  | 90   | 113  |                  |         |          |       |          |                   |        |       |                         |             |
|   | [°F] | [°F] | [°F] | [°F] |                  |         |          |       |          |                   |        |       |                         |             |

## Performance tables

R290, 230V/60Hz, CSIR, fan 3m/s, UL, KC, CB

|                  | pe   |      | Cooling capacity |         |          | COP   | EER      | P1        | I     | m    |        |
|------------------|------|------|------------------|---------|----------|-------|----------|-----------|-------|------|--------|
|                  | [°C] | [°F] | [W]              | [Btu/h] | [kcal/h] | [W/W] | [Btu/Wh] | [kcal/Wh] | [W]   | [A]  | [kg/h] |
| [°C / °F]        | -40  | -40  | 198,3            | 677     | 170,6    | 0,80  | 2,74     | 0,69      | 246,8 | 2,18 | 2,22   |
| cond. pressure   | -34  | -30  | 368,6            | 1259    | 317,2    | 1,04  | 3,55     | 0,89      | 354,6 | 2,51 | 4,13   |
| pc= 45/113       | -29  | -20  | 559,7            | 1912    | 481,7    | 1,25  | 4,27     | 1,08      | 447,5 | 2,80 | 6,30   |
| return gas temp. | -23  | -10  | 776,1            | 2650    | 667,9    | 1,47  | 5,02     | 1,27      | 527,9 | 3,07 | 8,76   |
| RGT= 32/90       | -21  | -5   | 895,0            | 3057    | 770,2    | 1,59  | 5,42     | 1,37      | 564,2 | 3,20 | 10,13  |
| liquid temp      | -15  | 5    | 1157,1           | 3952    | 995,8    | 1,84  | 6,27     | 1,58      | 630,5 | 3,45 | 13,17  |
| Tliq= 45/113     | -5   | 23   | 1722,5           | 5883    | 1482,4   | 2,34  | 7,99     | 2,01      | 736,1 | 3,88 | 19,83  |
| [°C / °F]        | -40  | -40  | 38,6             | 132     | 33,3     | 0,29  | 0,97     | 0,25      | 135,6 | 1,84 | 0,48   |
| cond. pressure   | -34  | -30  | 215,1            | 735     | 185,1    | 0,77  | 2,61     | 0,66      | 281,0 | 2,29 | 2,66   |
| pc= 55/131       | -29  | -20  | 405,8            | 1386    | 349,3    | 1,00  | 3,40     | 0,86      | 407,2 | 2,69 | 5,04   |
| return gas temp  | -23  | -10  | 615,2            | 2101    | 529,5    | 1,19  | 4,07     | 1,02      | 516,8 | 3,06 | 7,67   |
| RGT= 32/90       | -21  | -5   | 728,3            | 2487    | 626,8    | 1,29  | 4,39     | 1,11      | 566,1 | 3,23 | 9,10   |
| liquid temp      | -15  | 5    | 973,8            | 3326    | 838,0    | 1,49  | 5,07     | 1,28      | 655,4 | 3,55 | 12,24  |
| Tliq= 55/131     | -5   | 23   | 1492,7           | 5098    | 1284,6   | 1,89  | 6,44     | 1,62      | 791,6 | 4,07 | 19,02  |