

## Model

Designation	<b>SCE18CNLX</b>	115V/60Hz 1~	Sales code:	<b>104H7888</b>
-------------	------------------	--------------	-------------	-----------------

## Compressor design

Oil type	Polyolester	Refrigerant(s)	<b>R290</b>
Oil viscosity	32cSt	Displacement	17,68cm <sup>3</sup> / 1,08cu.in
Oil quantity	550cm <sup>3</sup> / 18,6fl.oz	Compressors on pallet	80
Refr. charge - tech. limit	450g / 15,9oz		
Free gas volume comp.	1460cm <sup>3</sup> / 49,4fl.oz		
Weight	14,2kg / 31,3lbs		
Motor protection	external		
Winding resistance main	0,82Ω (at 25°C)		
Winding resistance aux	2,9Ω (at 25°C)		
Max. winding temp.	125°C / 257°F		
Max. discharge temp.	140°C / 284°F		



## General - Configurations with SCE18CNLX

	<b>Conf. 1</b>
Motorconfiguration	CSIR
Power supply (nominal)	115V/60Hz
Number of phases	1
Voltage range	103-127V
Approvals	UL
Starting torque	HST
Note	Protector and cover are included and pre-assembled to compressor.

## Applications with SCE18CNLX

	<b>Conf. 1</b>
Refrigerant	R290
Application	LBP
System cooling	fan 3m/s
Hot gas defrost	OK
Long interval pull down	-/-

## Electrical data - Configurations with SCE18CNLX

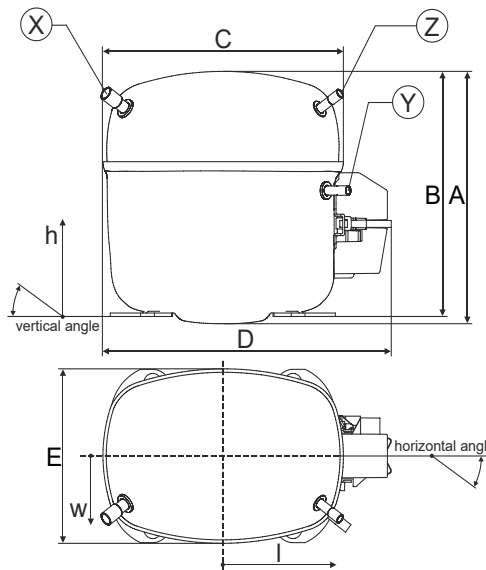
	<b>Conf. 1</b>
Starting device type	relay
Run capacitor	-/-
Start capacitor	280μF
LRA (locked rotor amps / 4s/ U(N))	43,13A
RLA (rated load amps / 1s/ U(N))	8,3A
Cut in current (U(N))	43,13A

## Model

Designation	<b>SCE18CNLX</b>	115V/60Hz 1~	Sales code:	<b>104H7888</b>
-------------	------------------	--------------	-------------	-----------------

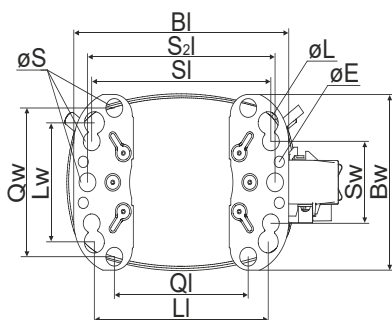
## Compressor dimensions

<b>Housing</b>	A Height	219mm / 8,62in
	B Height	213mm / 8,39in
	C Length shell	218mm / 8,58in
	D Length w. cover	255mm / 10,04in
	E Width	151mm / 5,94in



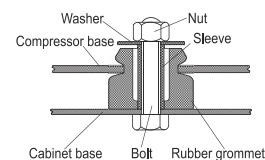
Connectors		Suction	Discharge	Process
		X	Y	Z
Diameter	[mm]	øi 9,54-9,72	øi 6,41-6,59	øi 6,41-6,59
	(i:inside, o:outside) [in]	øi 0,38-0,38	øi 0,25-0,26	øi 0,25-0,26
Material		copper	copper	copper
Horizontal angle	±2°	37°	37°	143°
Vertical angle	±2°	30°	0°	150°
Position l/h/w	[mm]	107/193/55	115/110/63	-107/193/55
	[in]	4,2/7,6/2,2	4,5/4,3/2,5	-4,2/7,6/2,2
Straight tube l.	[mm]	12	12	12
	[in]	0,5	0,5	0,5

## Compressor fixation

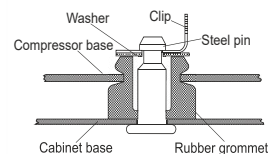


Baseplate	[mm]	[inch]
BI	204	8.03
Bw	150	5.9
øE	ø 9.7	ø 0.38
Large holes		
LI	165	6.5
Lw	101.6	4
øL	ø 19	ø 0.75
Small holes		
SI	170	6.7
Sw	70	2.76
øS	ø 16	ø 0.63
QI	127	5
Qw	127	5

### Bolt joint



### Snap-on



## Mounting accessories

Mounting accessories	one comp.	multi pack
Bolt joint   M6   ø16mm	118-1917	118-1918
Bolt joint   ø1/4"   ø16mm	118-1946	
Bolt joint   ø1/4"   ø19mm	118-1949	
Snap-on   ø7,3   ø16mm	118-1947	118-1919

## Application notes

Provision for PE Grounding is located at the PE Stamp on the compressor

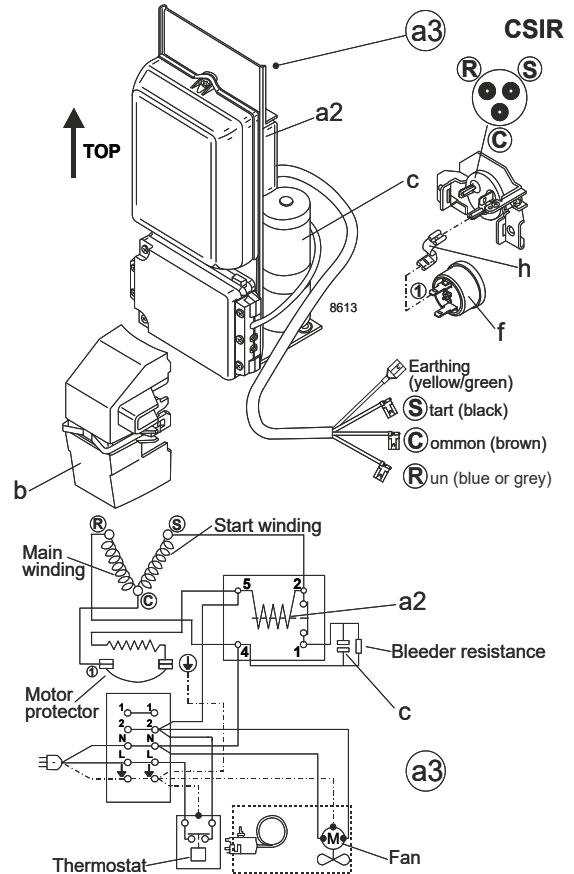
## Model

Designation	<b>SCE18CNLX</b>	<b>115V/60Hz</b>	<b>Conf. 1</b>	Sales code:	<b>104H7888</b>
-------------	------------------	------------------	----------------	-------------	-----------------

## Configuration

Motorconfiguration	CSIR
Power supply (nominal)	115V/60Hz 1~
Refrigerant	R290
Application	LBP
Voltage range	103-127V
Starting torque	HST
Approvals	UL

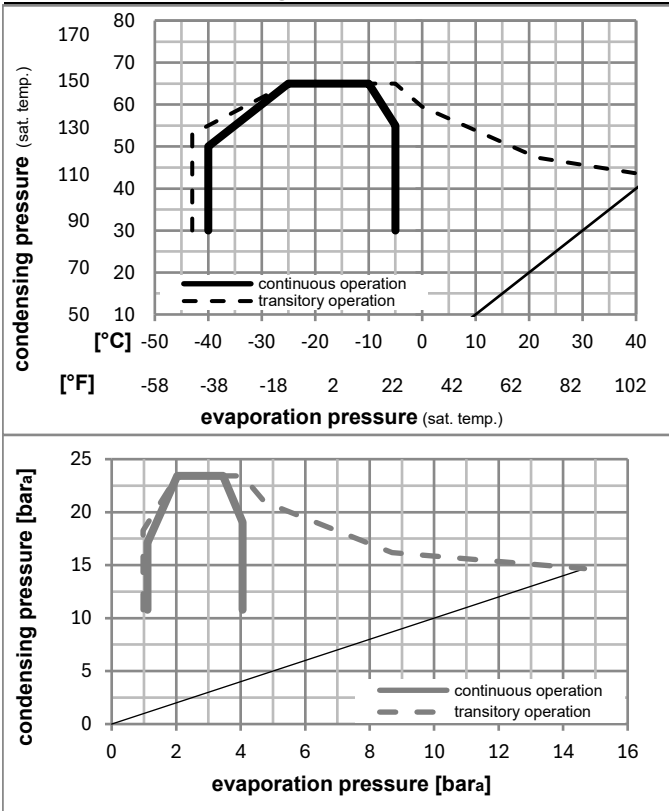
## Electrical accessories / wiring diagram



## Ambient/ machine room temperatures minimum /maximum

Ambient temperature range:	10 - 43°C / 50 - 110°F
Machine room temperature range:	10 - 48°C / 50 - 119°F
Compressor cooling:	fan 3m/s

## Operation pressure range



## Components (protector (f)+ holder (h)+ cover (b): pre assembled)

a3	SC starter kit (550mm)	117-7802
h	protector holder	117U0439
f	ext. protector (T1101)	117U3218
b	plastic cover + clamp	117U1021

## Alternative comp.

a2	potential relay (RVA 7AA3R)	117-7441
c	start capacitor (280µF, 6.3mm)	117U5350

## Model

Designation **SCE18CNLX 115V/60Hz** Conf. 1 Sales code: **104H7888**

## Optimization + standard conditions

R290, 115V/60Hz, CSIR, fan 3m/s, UL

	Evaporating pressure (saturation temperature)				Condensing pressure (saturation temperature)			COP	EER	Power consumption			ASHRAE LBP			
	pe	pc	RGT	Tliq	Return gas temp.	Liquid temp.	Cooling capacity			P1	I	Ref. mass flow				
	[°C]	[°C]	[°C]	[°C]	[°C]	[°C]	[W]	[Btu/h]	[kcal/h]	[W/W]	[Btu/Wh]	[kcal/Wh]	[W]	[A]	[kg/h]	
	-23	54	32	32			937,2	3201	806,6	1,53	5,21	1,31	614,3	6,08	9,49	ASHRAE LBP
	[°F]															
	-10	130	90	90												
	-25	55	32	55			689,2	2354	593,1	1,18	4,03	1,02	583,7	5,85	8,58	cecomaf LBP
	[°F]															
	-13	131	90	131												
	-35	40	20	40			462,3	1579	397,8	1,10	3,75	0,95	420,7	4,71	5,28	EN12900 LBP
	[°F]															
	-31	104	68	104												
	-23	49	4,4	49			780,8	2667	672,0	1,28	4,38	1,10	608,2	6,03	10,81	ARI540 LBP
	[°F]															
	-10	120	40	120												
	-23	41	32	32			1068,8	3650	919,8	1,81	6,17	1,55	591,9	5,91	10,82	AHAM LBP
	[°F]															
	-10	105	90	90												
	-35	45	32	45			400,7	1369	344,9	0,97	3,32	0,84	412,1	4,65	4,49	opt
	[°F]															
	-31	113	90	113												

## Performance tables

R290, 115V/60Hz, CSIR, fan 3m/s, UL

	pe		Cooling capacity			COP	EER	P1	I	m	
	[°C]	[°F]	[W]	[Btu/h]	[kcal/h]	[W/W]	[Btu/Wh]	[kcal/Wh]	[W]	[A]	[kg/h]
[°C / °F]	-40	-40	161,9	553	139,3	0,50	1,71	0,43	323,2	4,12	1,81
cond. pressure	-34	-30	426,0	1455	366,6	1,01	3,45	0,87	421,7	4,71	4,78
pc= 45/113	-29	-20	672,5	2297	578,8	1,31	4,47	1,13	514,4	5,33	7,56
return gas temp.	-23	-10	922,7	3151	794,1	1,54	5,25	1,32	600,7	5,98	10,42
RGT= 32/90	-21	-5	1055,8	3606	908,7	1,65	5,62	1,42	641,4	6,29	11,95
liquid temp	-15	5	1351,5	4616	1163,1	1,88	6,43	1,62	717,6	6,91	15,38
Tliq= 45/113	-5	23	2041,3	6972	1756,8	2,44	8,34	2,10	836,4	7,89	23,50
[°C / °F]	-40	-40	75,4	257	64,9	0,26	0,88	0,22	291,6	3,95	0,93
cond. pressure	-34	-30	317,0	1083	272,8	0,79	2,69	0,68	402,9	4,60	3,92
pc= 55/131	-29	-20	536,9	1834	462,0	1,05	3,59	0,90	510,6	5,31	6,66
return gas temp	-23	-10	756,2	2583	650,8	1,23	4,20	1,06	614,4	6,08	9,43
RGT= 32/90	-21	-5	872,4	2979	750,8	1,31	4,48	1,13	664,7	6,47	10,91
liquid temp	-15	5	1130,9	3862	973,2	1,48	5,07	1,28	761,9	7,26	14,22
Tliq= 55/131	-5	23	1743,4	5954	1500,4	1,89	6,44	1,62	924,4	8,62	22,21