

## Model

Designation	<b>SCE18CNLX</b>	220-240V/50Hz 1~	Sales code:	<b>104H8848</b>
-------------	------------------	------------------	-------------	-----------------

## Compressor design

Oil type	Polyolester	Refrigerant(s)	<b>R290</b>
Oil viscosity	32cSt	Displacement	17,69cm <sup>3</sup> / 1,08cu.in
Oil quantity	550cm <sup>3</sup> / 18,6fl.oz	Compressors on pallet	80
Refr. charge - tech. limit	550g / 19,4oz		
Free gas volume comp.	1460cm <sup>3</sup> / 49,4fl.oz		
Weight	14,2kg / 31,3lbs		
Motor protection	external		
Winding resistance main	4,07Ω (at 25°C)		
Winding resistance aux	15,88Ω (at 25°C)		
Max. winding temp.	125°C / 257°F		
Max. discharge temp.	140°C / 284°F		



## General - Configurations with SCE18CNLX

	<b>Conf. 1</b>
Motorconfiguration	CSIR
Power supply (nominal)	220-240V/50Hz
Number of phases	1
Voltage range	198-254V
Approvals	VDE
Starting torque	HST
Note	Protector, relay and cover are included and pre-assembled to compressor.

## Applications with SCE18CNLX

	<b>Conf. 1</b>
Refrigerant	R290
Application	LBP
System cooling	fan 3m/s
Hot gas defrost	OK
Long interval pull down	-/-

## Electrical data - Configurations with SCE18CNLX

	<b>Conf. 1</b>
Starting device type	relay
Run capacitor	-/-
Start capacitor	80μF
LRA (locked rotor amps / 4s/ U(N))	17,47A
RLA (rated load amps / 1s/ U(N))	2,92A
Cut in current (U(N))	17,47A

## Model

Designation

**SCE18CNLX**

220-240V/50Hz 1~

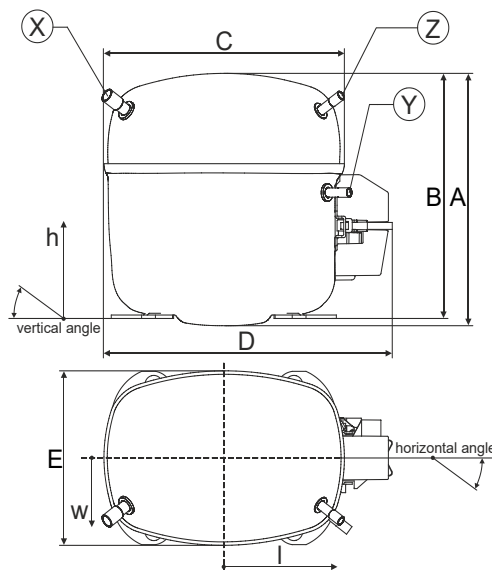
Sales code:

**104H8848**

## Compressor dimensions

Housing	A Height	219mm / 8,62in
	B Height	213mm / 8,39in
	C Length shell	218mm / 8,58in
	D Length w. cover	255mm / 10,04in
	E Width	151mm / 5,94in

Connectors	Suction		Discharge		Process	
	X	Y	Z	X	Y	Z
Diameter [mm]	øi 10,11-10,29	øi 6,11-6,29	øi 6,11-6,29	øi 10,11-10,29	øi 6,11-6,29	øi 6,11-6,29
(i:inside, o:outside) [in]	øi 0,4-0,41	øi 0,24-0,25	øi 0,24-0,25	øi 0,4-0,41	øi 0,24-0,25	øi 0,24-0,25
Material	copper	copper	copper	copper	copper	copper
Horizontal angle ±2°	37°	37°	143°	37°	37°	143°
Vertical angle ±2°	30°	0°	150°	30°	0°	150°
Position l/h/w [mm]	107/193/55	115/110/63	-107/193/55	107/193/55	115/110/63	-107/193/55
[in]	4,2/7,6/2,2	4,5/4,3/2,5	-4,2/7,6/2,2	4,2/7,6/2,2	4,5/4,3/2,5	-4,2/7,6/2,2
Straight tube l. [mm]	12	12	12	12	12	12
[in]	0,5	0,5	0,5	0,5	0,5	0,5



## Compressor fixation

Baseplate	[mm]	[inch]
BI	204	8.03
Bw	150	5.9
øE	ø 9.7	ø 0.38

Large holes	[mm]	[inch]
LI	165	6.5
Lw	101.6	4
øL	ø 19	ø 0.75

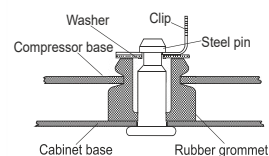
  

Small holes	[mm]	[inch]
SI	170	6.7
Sw	70	2.76
øS	ø 16	ø 0.63
QI	127	5
Qw	127	5

### Bolt joint



### Snap-on



## Mounting accessories

Mounting accessories	one comp.	multi pack
Bolt joint   M6   ø16mm	118-1917	118-1918
Bolt joint   ø1/4"   ø16mm	118-1946	
Bolt joint   ø1/4"   ø19mm	118-1949	
Snap-on   ø7,3   ø16mm	118-1947	118-1919

## Application notes

Provision for PE Grounding is located at the PE Stamp on the compressor

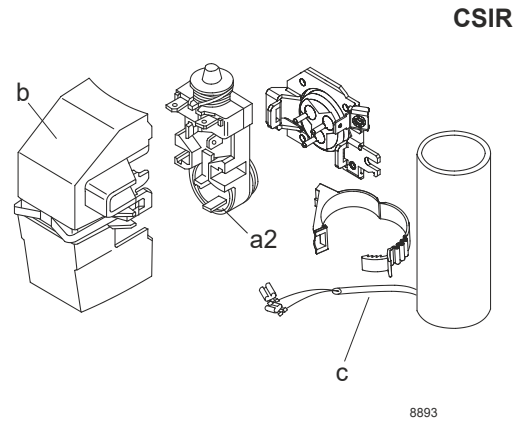
## Model

Designation	<b>SCE18CNLX</b>	<b>220-240V/50Hz</b>	<b>Conf. 1</b>	Sales code:	<b>104H8848</b>
-------------	------------------	----------------------	----------------	-------------	-----------------

## Configuration

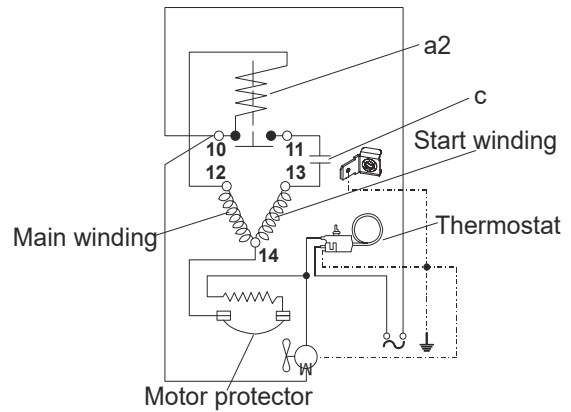
Motor configuration	CSIR
Power supply (nominal)	220-240V/50Hz 1~
Refrigerant	R290
Application	LBP
Voltage range	198-254V
Starting torque	HST
Approvals	VDE

## Electrical accessories / wiring diagram

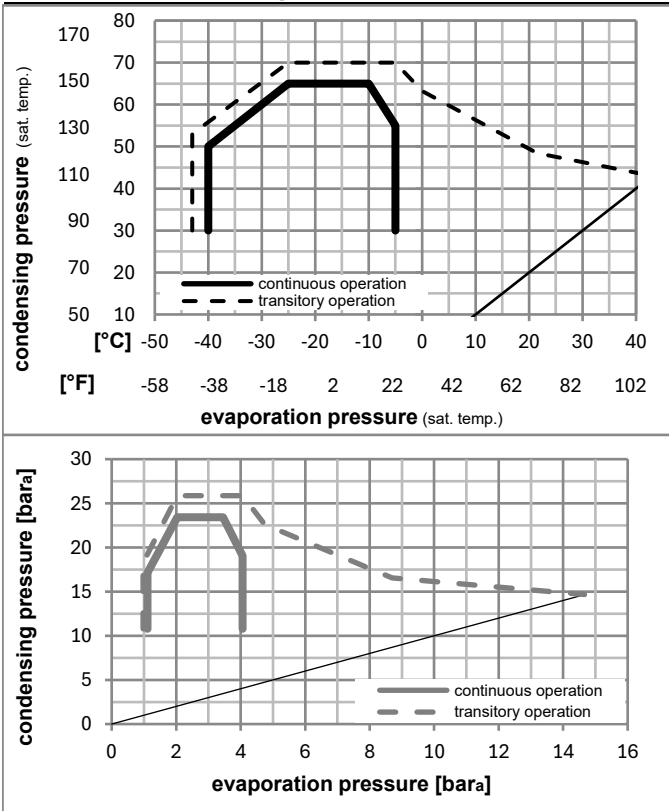


## Ambient/ machine room temperatures minimum /maximum

Ambient temperature range:	10 - 43°C / 50 - 110°F
Machine room temperature range:	10 - 48°C / 50 - 119°F
Compressor cooling:	fan 3m/s



## Operation pressure range



## Components (relay (a2)+ cover (b): pre-assembled)

a2	assy. relay + ext. protector (T1133)	117U7405
c	start capacitor (80µF)	117U5017
d	cord relief	103N1004
b	plastic cover + clamp	117U1033

## Model

Designation **SCE18CNLX 220-240V/50Hz** Conf. 1 Sales code: **104H8848**

## Optimization + standard conditions

R290, 230V/50Hz, CSIR, fan 3m/s, VDE

	pe	pc	RGT	Tliq	Cooling capacity	COP	EER	P1	I	Ref. mass flow	
	[°C]	[°C]	[°C]	[°C]	[W]	[W/W]	[Btu/Wh]	[W]	[A]	[kg/h]	
ASHRAE LBP	-23	54	32	32	791,4	1,51	5,16	524,2	3,00	8,01	
	[°F]				[Btu/h]		[kcal/h]				
ASHRAE LBP	-10	130	90	90	2703	1,51	5,16	524,2	3,00	8,01	
cecomaf LBP	-25	55	32	55	586,1	1,17	3,99	502,3	2,94	7,30	
	[°F]				[W]		[kcal/h]				
cecomaf LBP	-13	131	90	131	2002	1,17	3,99	502,3	2,94	7,30	
EN12900 LBP	-35	40	20	40	439,6	1,22	4,15	361,4	2,58	5,02	
	[°F]				[W]		[kcal/h]				
EN12900 LBP	-31	104	68	104	1501	1,22	4,15	361,4	2,58	5,02	
ARI540 LBP	-23	49	4,4	49	650,4	1,27	4,34	511,3	2,96	9,01	
	[°F]				[W]		[kcal/h]				
ARI540 LBP	-10	120	40	120	2221	1,27	4,34	511,3	2,96	9,01	
AHAM LBP	-23	41	32	32	868,7	1,77	6,05	490,5	2,93	8,80	
	[°F]				[W]		[kcal/h]				
AHAM LBP	-10	105	90	90	2967	1,77	6,05	490,5	2,93	8,80	
opt	-35	45	32	45	413,7	1,14	3,89	362,7	2,56	4,64	
	[°F]				[W]		[kcal/h]				
opt	-31	113	90	113	1413	1,14	3,89	362,7	2,56	4,64	

## Performance tables

R290, 230V/50Hz, CSIR, fan 3m/s, VDE

	pe	Cooling capacity	COP	EER	P1	I	m
	[°C]	[W]	[W/W]	[Btu/Wh]	[W]	[A]	[kg/h]
[°C / °F]	-40	314,6	1,04	3,57	301,3	2,42	3,52
cond. pressure	-35	413,7	1,14	3,89	362,7	2,56	4,64
pc= 45/113	-30	542,1	1,28	4,37	423,7	2,72	6,09
return gas temp.	-25	701,1	1,45	4,96	483,0	2,89	7,91
RGT= 32/90	-20	891,6	1,65	5,65	539,3	3,07	10,10
liquid temp	-15	1114,8	1,89	6,44	591,1	3,25	12,68
Tliq= 45/113	-5	1663,3	2,46	8,40	676,3	3,57	19,15
[°C / °F]	-40	230,5	0,80	2,72	289,5	2,34	2,84
cond. pressure	-35	324,7	0,90	3,08	360,0	2,51	4,01
pc= 55/131	-30	442,8	1,03	3,51	431,4	2,71	5,49
return gas temp	-25	586,1	1,17	3,99	502,3	2,94	7,30
RGT= 32/90	-20	755,4	1,32	4,52	571,4	3,17	9,45
liquid temp	-15	952,0	1,49	5,10	637,4	3,41	11,97
Tliq= 55/131	-5	1431,1	1,90	6,48	754,8	3,86	18,23