

Model

Designation	SCE18CNLX	208-230V/60Hz 1~	Sales code:	104H8888
-------------	------------------	------------------	-------------	-----------------

Compressor design

Oil type	Polyolester	Refrigerant(s)	R290
Oil viscosity	32cSt	Displacement	17,69cm ³ / 1,08cu.in
Oil quantity	550cm ³ / 18,6fl.oz	Compressors on pallet	80
Refr. charge - tech. limit	450g / 15,9oz		
Free gas volume comp.	1460cm ³ / 49,4fl.oz		
Weight	14,2kg / 31,3lbs		
Motor protection	external		
Winding resistance main	3,5Ω (at 25°C)		
Winding resistance aux	20,7Ω (at 25°C)		
Max. winding temp.	125°C / 257°F		
Max. discharge temp.	140°C / 284°F		



General - Configurations with SCE18CNLX

	Conf. 1
Motorconfiguration	CSIR
Power supply (nominal)	208-230V/60Hz
Number of phases	1
Voltage range	187-253V
Approvals	UL, KC, CB
Starting torque	HST
Note	Protector, relay and cover are included and pre-assembled to compressor.

Applications with SCE18CNLX

	Conf. 1
Refrigerant	R290
Application	LBP
System cooling	fan 3m/s
Hot gas defrost	OK
Long interval pull down	-/-

Electrical data - Configurations with SCE18CNLX

	Conf. 1
Starting device type	relay
Run capacitor	-/-
Start capacitor	60μF
LRA (locked rotor amps / 4s/ U(N))	20,9A
RLA (rated load amps / 1s/ U(N))	3,8A
Cut in current (U(N))	20,9A

Model

Designation

SCE18CNLX

208-230V/60Hz 1~

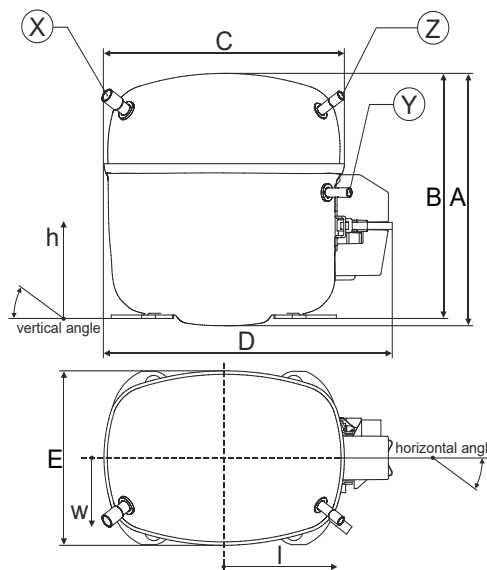
Sales code:

104H8888

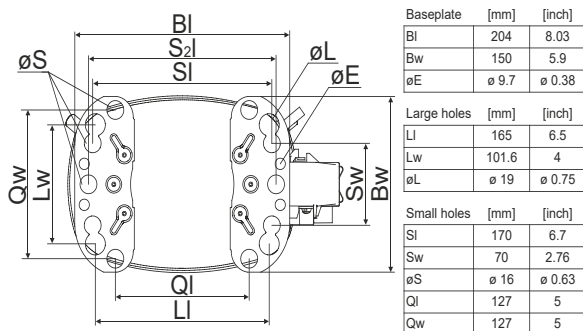
Compressor dimensions

Housing	A Height	219mm / 8,62in
	B Height	213mm / 8,39in
	C Length shell	218mm / 8,58in
	D Length w. cover	255mm / 10,04in
	E Width	151mm / 5,94in

Connectors		Suction	Discharge	Process
		X	Y	Z
Diameter	[mm]	øi 9,54-9,72	øi 6,41-6,59	øi 6,41-6,59
(i:inside, o:outside)	[in]	øi 0,38-0,38	øi 0,25-0,26	øi 0,25-0,26
Material		copper	copper	copper
Horizontal angle	±2°	37°	37°	143°
Vertical angle	±2°	30°	0°	150°
Position l/h/w	[mm]	107/193/55	115/110/63	-107/193/55
	[in]	4,2/7,6/2,2	4,5/4,3/2,5	-4,2/7,6/2,2
Straight tube l.	[mm]	12	12	12
	[in]	0,5	0,5	0,5



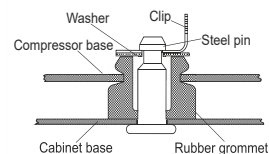
Compressor fixation



Bolt joint



Snap-on



Mounting accessories

Mounting accessories	one comp.	multi pack
Bolt joint M6 ø16mm	118-1917	118-1918
Bolt joint ø1/4" ø16mm	118-1946	
Bolt joint ø1/4" ø19mm	118-1949	
Snap-on ø7,3 ø16mm	118-1947	118-1919

Application notes

Provision for PE Grounding is located at the PE Stamp on the compressor

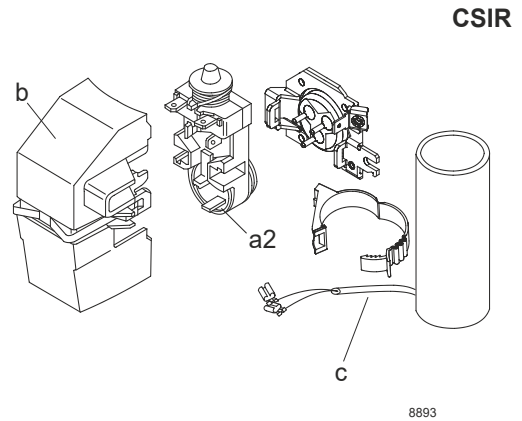
Model

Designation	SCE18CNLX	208-230V/60Hz	Conf. 1	Sales code:	104H8888
-------------	------------------	----------------------	----------------	-------------	-----------------

Configuration

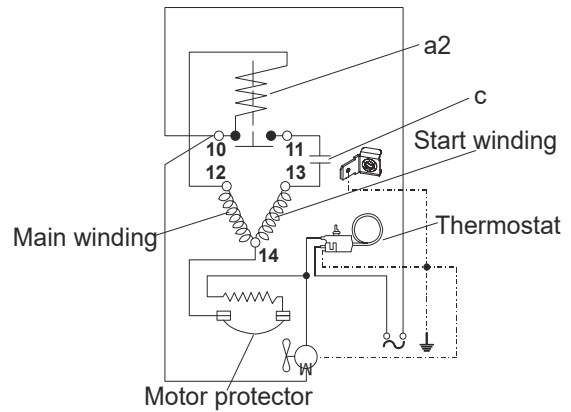
Motor configuration	CSIR
Power supply (nominal)	208-230V/60Hz 1~
Refrigerant	R290
Application	LBP
Voltage range	187-253V
Starting torque	HST
Approvals	UL
	KC
	CB

Electrical accessories / wiring diagram

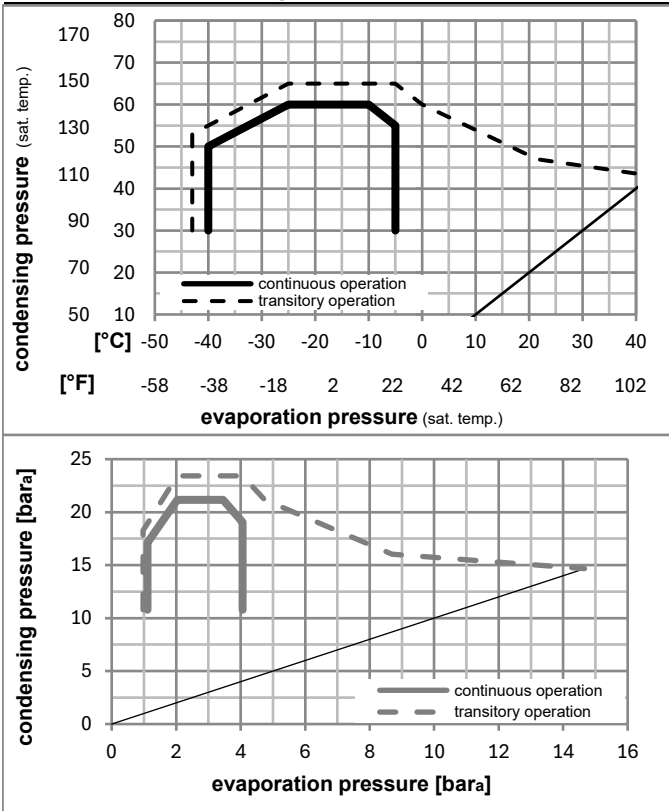


Ambient/ machine room temperatures minimum /maximum

Ambient temperature range:	10 - 38°C / 50 - 101°F
Machine room temperature range:	10 - 43°C / 50 - 110°F
Compressor cooling:	fan 3m/s



Operation pressure range



Components (relay (a2)+ cover (b): pre-assembled)

a2	assy. relay + ext. protector (T1120)	117U7413
c	start capacitor (60μF, 6.3mm, 82kOhm)	117U5076
b	plastic cover + clamp	117U1021

Model

Designation **SCE18CNLX** **208-230V/60Hz** Conf. 1 Sales code: **104H8888**

Optimization + standard conditions

R290, 230V/60Hz, CSIR, fan 3m/s, UL, KC, CB

	Evaporating pressure (saturation temperature)				Condensing pressure (saturation temperature)			Return gas temp.	Liquid temp.	Cooling capacity	COP	EER	Power consumption			ASHRAE LBP
	pe	pc	RGT	Tliq	[W]	[Btu/h]	[kcal/h]						P1	I	m	
	[°C]	[°F]	[°C]	[°F]	[W]	[Btu/h]	[kcal/h]	[W/W]	[Btu/Wh]	[kcal/Wh]	[W]	[A]	[kg/h]			
	-23	54	32	32	937,8	3203	807,1	1,50	5,13	1,29	624,8	3,45	9,50			
	-10	130	90	90												
	-25	55	32	55	693,8	2370	597,1	1,16	3,98	1,00	596,0	3,34	8,64	cecomaf LBP		
	-13	131	90	131												
	-35	40	20	40	522,6	1785	449,8	1,15	3,93	0,99	453,8	2,85	5,97	EN12900 LBP		
	-31	104	68	104												
	-23	49	4,4	49	777,2	2654	668,9	1,27	4,33	1,09	612,9	3,39	10,76	ARI540 LBP		
	-10	120	40	120												
	-23	41	32	32	1058,2	3614	910,7	1,78	6,10	1,54	592,9	3,29	10,72	AHAM LBP		
	-10	105	90	90												
	-35	45	32	45	480,8	1642	413,8	1,07	3,64	0,92	450,8	2,83	5,39	opt		
	-31	113	90	113												

Performance tables

R290, 230V/60Hz, CSIR, fan 3m/s, UL, KC, CB

	pe		Cooling capacity			COP	EER	P1	I	m	
	[°C]	[°F]	[W]	[Btu/h]	[kcal/h]	[W/W]	[Btu/Wh]	[kcal/Wh]	[W]	[A]	[kg/h]
[°C / °F]	-40	-40	325,1	1110	279,8	0,84	2,88	0,73	385,0	2,65	3,63
cond. pressure	-34	-30	499,0	1704	429,5	1,09	3,72	0,94	458,3	2,85	5,59
pc= 45/113	-29	-20	694,7	2372	597,9	1,30	4,45	1,12	532,9	3,09	7,81
return gas temp.	-23	-10	918,3	3136	790,3	1,51	5,17	1,30	606,7	3,35	10,37
RGT= 32/90	-21	-5	1042,6	3561	897,3	1,62	5,54	1,40	642,6	3,49	11,80
liquid temp	-15	5	1320,2	4509	1136,1	1,86	6,34	1,60	711,2	3,77	15,02
Tliq= 45/113	-5	23	1934,3	6606	1664,7	2,37	8,08	2,04	817,5	4,22	22,27
[°C / °F]	-40	-40	202,8	693	174,5	0,65	2,21	0,56	312,8	2,34	2,50
cond. pressure	-34	-30	370,3	1265	318,7	0,89	3,03	0,76	417,6	2,68	4,58
pc= 55/131	-29	-20	553,2	1889	476,1	1,06	3,61	0,91	523,0	3,06	6,87
return gas temp	-23	-10	757,9	2588	652,3	1,21	4,13	1,04	626,9	3,46	9,45
RGT= 32/90	-21	-5	870,4	2972	749,1	1,28	4,39	1,11	677,5	3,67	10,88
liquid temp	-15	5	1119,6	3823	963,5	1,44	4,93	1,24	775,0	4,07	14,08
Tliq= 55/131	-5	23	1667,0	5693	1434,6	1,79	6,11	1,54	931,6	4,74	21,24