

Model

Designation	SCE18CNX	220-240V/50Hz 1~	Sales code:	104H8840
-------------	-----------------	------------------	-------------	-----------------

Compressor design

Oil type	Polyolester	Refrigerant(s)	R290
Oil viscosity	32cSt	Displacement	17,69cm ³ / 1,08cu.in
Oil quantity	550cm ³ / 18,6fl.oz	Compressors on pallet	80
Refr. charge - tech. limit	550g / 19,4oz		
Free gas volume comp.	1460cm ³ / 49,4fl.oz		
Weight	14,2kg / 31,3lbs		
Motor protection	external		
Winding resistance main	4,07Ω (at 25°C)		
Winding resistance aux	15,88Ω (at 25°C)		
Max. winding temp.	125°C / 257°F		
Max. discharge temp.	140°C / 284°F		



General - Configurations with SCE18CNX

	Conf. 1
Motorconfiguration	CSCR
Power supply (nominal)	220-240V/50Hz
Number of phases	1
Voltage range	198-254V
Approvals	VDE, CCC
Starting torque	HST
Note	Protector and cover are included and pre-assembled to compressor.

Applications with SCE18CNX

	Conf. 1
Refrigerant	R290
Application	LBP+MBP
System cooling	fan 3m/s
Hot gas defrost	OK
Long interval pull down	OK

Electrical data - Configurations with SCE18CNX

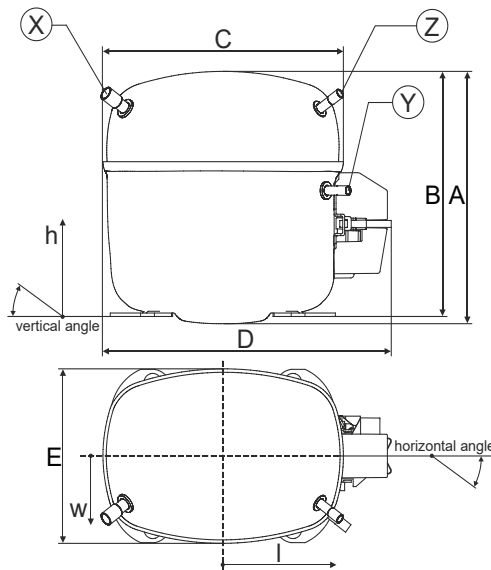
	Conf. 1
Starting device type	relay
Run capacitor	10μF
Start capacitor	80μF
LRA (locked rotor amps / 4s/ U(N))	18,02A
RLA (rated load amps / 1s/ U(N))	2,15A
Cut in current (U(N))	18,02A

Model

Designation	SCE18CNX	220-240V/50Hz 1~	Sales code:	104H8840
-------------	-----------------	------------------	-------------	-----------------

Compressor dimensions

Housing	A Height	219mm / 8,62in
	B Height	213mm / 8,39in
	C Length shell	218mm / 8,58in
	D Length w. cover	255mm / 10,04in
	E Width	151mm / 5,94in



Connectors	Suction		Discharge		Process	
	X	Y	Z	X	Y	Z
Diameter [mm]	øi 10,11-10,29	øi 6,11-6,29	øi 6,11-6,29	øi 10,11-10,29	øi 6,11-6,29	øi 6,11-6,29
(i:inside, o:outside) [in]	øi 0,4-0,41	øi 0,24-0,25	øi 0,24-0,25	øi 0,4-0,41	øi 0,24-0,25	øi 0,24-0,25
Material	copper	copper	copper	copper	copper	copper
Horizontal angle ±2°	37°	37°	143°	37°	37°	143°
Vertical angle ±2°	30°	0°	150°	30°	0°	150°
Position l/h/w [mm]	107/193/55	115/110/63	-107/193/55	107/193/55	115/110/63	-107/193/55
[in]	4,2/7,6/2,2	4,5/4,3/2,5	-4,2/7,6/2,2	4,2/7,6/2,2	4,5/4,3/2,5	-4,2/7,6/2,2
Straight tube l. [mm]	12	12	12	12	12	12
[in]	0,5	0,5	0,5	0,5	0,5	0,5

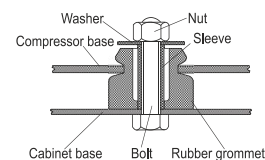
Compressor fixation

Baseplate	[mm]	[inch]
BI	204	8.03
Bw	150	5.9
øE	ø 9.7	ø 0.38

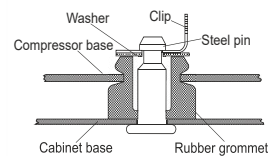
Large holes	[mm]	[inch]
LI	165	6.5
Lw	101.6	4
øL	ø 19	ø 0.75

Small holes	[mm]	[inch]
SI	170	6.7
Sw	70	2.76
øS	ø 16	ø 0.63
QI	127	5
Qw	127	5

Bolt joint



Snap-on



Mounting accessories

Mounting accessories	one comp.	multi pack
Bolt joint M6 ø16mm	118-1917	118-1918
Bolt joint ø1/4" ø16mm	118-1946	
Bolt joint ø1/4" ø19mm	118-1949	
Snap-on ø7,3 ø16mm	118-1947	118-1919

Application notes

Provision for PE Grounding is located at the PE Stamp on the compressor

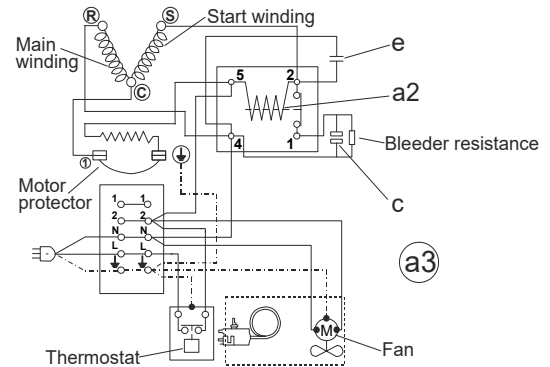
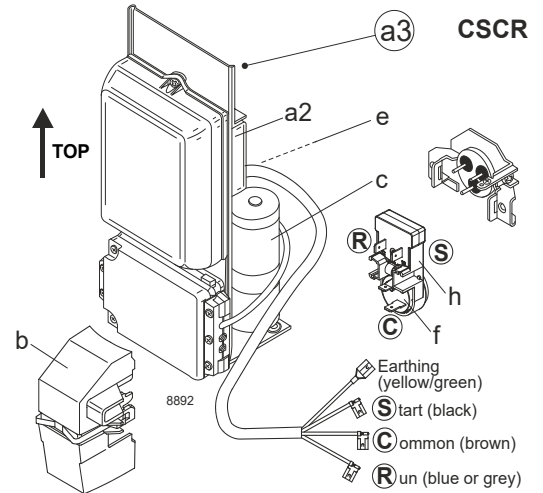
Model

Designation	SCE18CNX	220-240V/50Hz	Conf. 1	Sales code:	104H8840
-------------	-----------------	----------------------	----------------	-------------	-----------------

Configuration

Motorconfiguration	CSCR
Power supply (nominal)	220-240V/50Hz 1~
Refrigerant	R290
Application	LBP+MBP
Voltage range	198-254V
Starting torque	HST
Approvals	VDE CCC

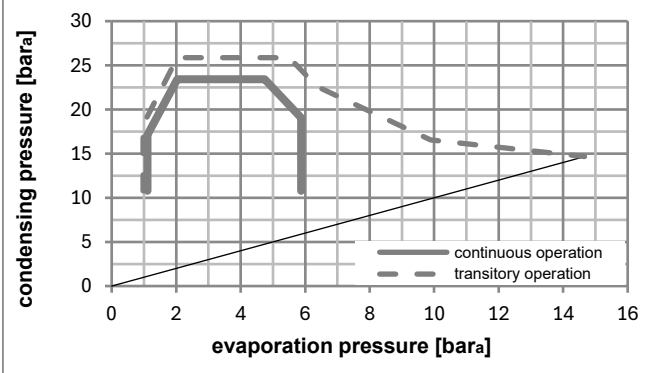
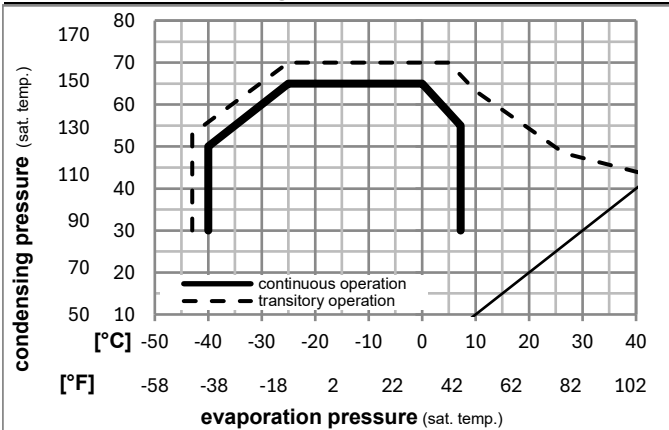
Electrical accessories / wiring diagram



Ambient/ machine room temperatures minimum /maximum

Ambient temperature range:	10 - 43°C / 50 - 110°F
Machine room temperature range:	10 - 48°C / 50 - 119°F
Compressor cooling:	fan 3m/s

Operation pressure range



Components (protector (f)+ holder (h)+ cover (b): pre assembled)

a3	SC starter kit (550mm)	117-7806
f / h	motor protector assy. (T1133)	117U8007
d	cord relief	103N1004
b	plastic cover + clamp	117U1033

Alternative comp.

a2	potential relay (RVA 4I3R A57)	117-7600
e	run capacitor (10µF, 6.3mm)	117-7112
c	start capacitor (80µF)	117U5373

Noise emission

Operation pressures:	pe: -25°C / -13°F
	pc: 45°C / 113°F
Motor speed appr.:	2900rpm
Lw(A):	56dB(A)

Model

Designation **SCE18CNX** **220-240V/50Hz** Conf. 1 Sales code: **104H8840**

Optimization + standard conditions

R290, 230V/50Hz, CSCR, fan 3m/s, VDE, CCC

	Evaporating pressure (saturation temperature)				Condensing pressure (saturation temperature)			COP	EER	P1	Power consumption		Ref. mass flow	
	pe	pc	RGT	Tliq	Cooling capacity						I	m		
	[°C]	[°C]	[°C]	[°C]	[W]	[Btu/h]	[kcal/h]	[W/W]	[Btu/Wh]	[kcal/Wh]	[W]	[A]	[kg/h]	
ASHRAE LBP	-23	54	32	32	806,8	2756	694,4	1,63	5,57	1,40	494,8	2,26	8,17	
	[°F]													
ASHRAE LBP	-10	130	90	90										
	[°F]													
ASHRAE LBP	-25	55	32	55	596,6	2038	513,4	1,25	4,28	1,08	475,8	2,18	7,43	
	[°F]													
ASHRAE LBP	-13	131	90	131										
	[°F]													
ASHRAE LBP	-35	40	20	40	436,4	1490	375,5	1,24	4,23	1,07	352,6	1,59	4,99	
	[°F]													
ASHRAE LBP	-31	104	68	104										
	[°F]													
ASHRAE MBP	-7	54	35	46	1526,5	5213	1313,7	2,24	7,65	1,93	681,5	3,05	17,41	
	[°F]													
ASHRAE MBP	20	130	95	115										
	[°F]													
ASHRAE MBP	-10	55	32	55	1205,3	4116	1037,3	1,85	6,33	1,60	650,0	2,92	15,25	
	[°F]													
ASHRAE MBP	14	131	90	131										
	[°F]													
ASHRAE MBP	-10	45	20	45	1347,9	4603	1160,0	2,26	7,73	1,95	595,7	2,65	16,55	
	[°F]													
ASHRAE MBP	14	113	68	113										
	[°F]													

Performance tables

R290, 230V/50Hz, CSCR, fan 3m/s, VDE, CCC

	pe		Cooling capacity			COP	EER	P1	I	m	
	[°C]	[°F]	[W]	[Btu/h]	[kcal/h]	[W/W]	[Btu/Wh]	[kcal/Wh]	[W]	[A]	[kg/h]
[°C / °F]	-40	-40	301,9	1031	259,8	0,97	3,31	0,83	311,2	1,34	3,37
cond. pressure	-35	-31	410,5	1402	353,3	1,15	3,92	0,99	358,0	1,59	4,60
pc= 45/113	-25	-13	713,6	2437	614,1	1,56	5,33	1,34	457,3	2,06	8,05
return gas temp.	-15	5	1140,2	3894	981,2	2,06	7,04	1,77	553,1	2,48	12,97
RGT= 32/90	-5	23	1701,4	5811	1464,2	2,69	9,19	2,32	632,5	2,80	19,59
liquid temp	0	32	2036,0	6953	1752,2	3,08	10,51	2,65	661,8	2,92	23,62
Tliq= 45/113	7,2	45	2584,6	8827	2224,3	3,76	12,83	3,23	687,8	3,04	30,37
[°C / °F]	-40	-40	219,1	748	188,6	0,72	2,44	0,62	306,3	1,36	2,70
cond. pressure	-35	-31	321,6	1098	276,8	0,89	3,05	0,77	359,5	1,64	3,98
pc= 55/131	-25	-13	596,6	2038	513,4	1,25	4,28	1,08	475,8	2,18	7,43
return gas temp	-15	5	974,4	3328	838,6	1,64	5,60	1,41	594,1	2,68	12,25
RGT= 32/90	-5	23	1466,0	5007	1261,7	2,09	7,14	1,80	701,4	3,13	18,68
liquid temp	0	32	1758,0	6004	1512,9	2,35	8,04	2,03	746,8	3,32	22,58
Tliq= 55/131	7,2	45	2236,2	7637	1924,5	2,80	9,57	2,41	798,2	3,55	29,13