

Model

Designation	SCE21CNLX	208-230V/60Hz 1~	Sales code:	104H8173
-------------	------------------	------------------	-------------	-----------------

Compressor design

Oil type	Polyolester	Refrigerant(s)	R290
Oil viscosity	32cSt	Displacement	20,95cm ³ / 1,28cu.in
Oil quantity	550cm ³ / 18,6fl.oz	Compressors on pallet	80
Refr. charge - tech. limit	550g / 19,4oz		
Free gas volume comp.	1460cm ³ / 49,4fl.oz		
Weight	14,2kg / 31,3lbs		
Motor protection	external		
Winding resistance main	2,76Ω (at 25°C)		
Winding resistance aux	11,08Ω (at 25°C)		
Max. winding temp.	125°C / 257°F		
Max. discharge temp.	140°C / 284°F		



General - Configurations with SCE21CNLX

	Conf. 1
Motorconfiguration	CSCR
Power supply (nominal)	208-230V/60Hz
Number of phases	1
Voltage range	187-253V
Approvals	UL
Starting torque	HST
Note	Protector and cover are included and pre-assembled to compressor.

Applications with SCE21CNLX

	Conf. 1
Refrigerant	R290
Application	LBP
System cooling	fan 3m/s
Hot gas defrost	OK
Long interval pull down	-/-

Electrical data - Configurations with SCE21CNLX

	Conf. 1
Starting device type	relay
Run capacitor	10μF
Start capacitor	80μF
LRA (locked rotor amps / 4s/ U(N))	25,43A
RLA (rated load amps / 1s/ U(N))	3,86A
Cut in current (U(N))	25,43A

Model

Designation

SCE21CNLX

208-230V/60Hz 1~

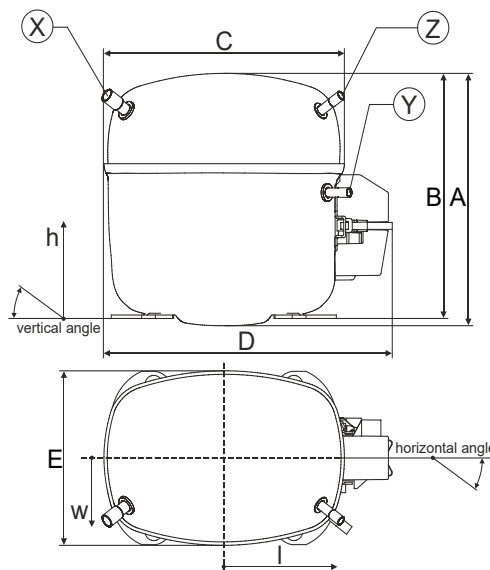
Sales code:

104H8173

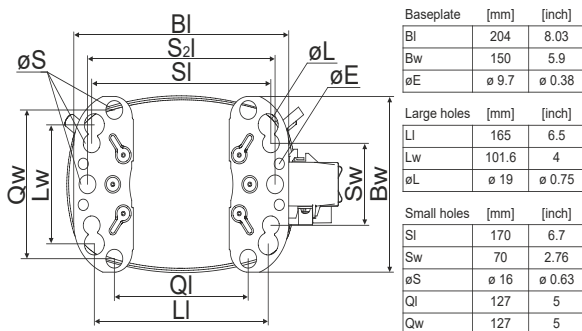
Compressor dimensions

Housing	A Height	219mm / 8,62in
	B Height	213mm / 8,39in
	C Length shell	218mm / 8,58in
	D Length w. cover	255mm / 10,04in
	E Width	151mm / 5,94in

Connectors		Suction	Discharge	Process
		X	Y	Z
Diameter	[mm]	øi 9,54-9,72	øi 6,41-6,59	øi 6,41-6,59
	(i:inside, o:outside) [in]	øi 0,38-0,38	øi 0,25-0,26	øi 0,25-0,26
Material		copper	copper	copper
Horizontal angle	±2°	37°	37°	143°
Vertical angle	±2°	30°	0°	150°
Position l/h/w	[mm]	107/193/55	115/110/63	-107/193/55
	[in]	4,2/7,6/2,2	4,5/4,3/2,5	-4,2/7,6/2,2
Straight tube l.	[mm]	12	12	12
	[in]	0,5	0,5	0,5



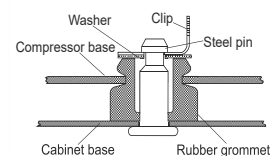
Compressor fixation



Bolt joint



Snap-on



Mounting accessories

Mounting accessories	one comp.	multi pack
Bolt joint M6 ø16mm	118-1917	118-1918
Bolt joint ø1/4" ø16mm	118-1946	
Bolt joint ø1/4" ø19mm	118-1949	
Snap-on ø7,3 ø16mm	118-1947	118-1919

Application notes

Provision for PE Grounding is located at the PE Stamp on the compressor

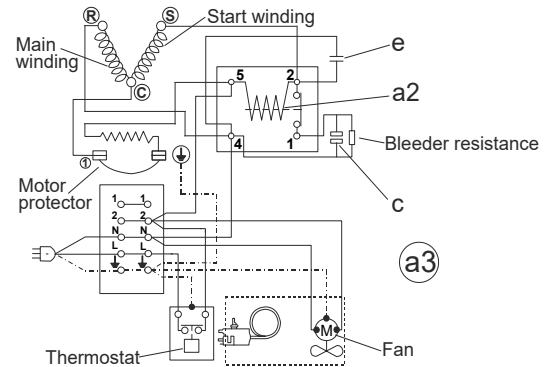
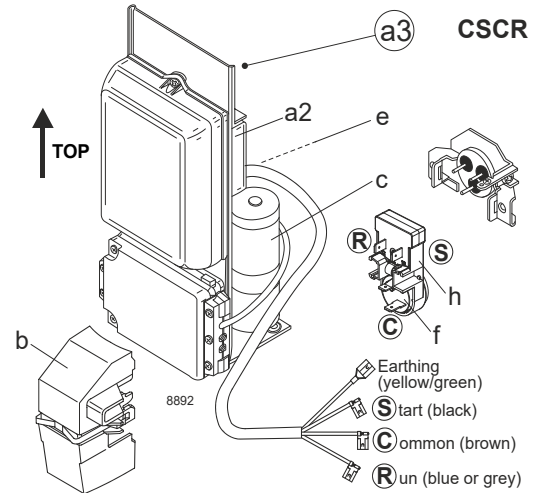
Model

Designation **SCE21CNLX** **208-230V/60Hz** Conf. 1 Sales code: **104H8173**

Configuration

Motor configuration CSCR
 Power supply (nominal) 208-230V/60Hz 1~
 Refrigerant R290
 Application LBP
 Voltage range 187-253V
 Starting torque HST
 Approvals UL

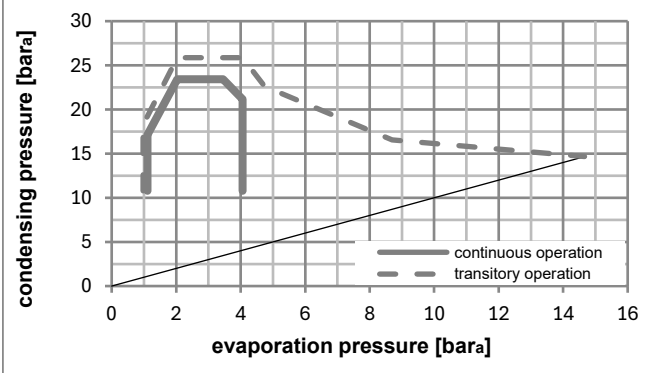
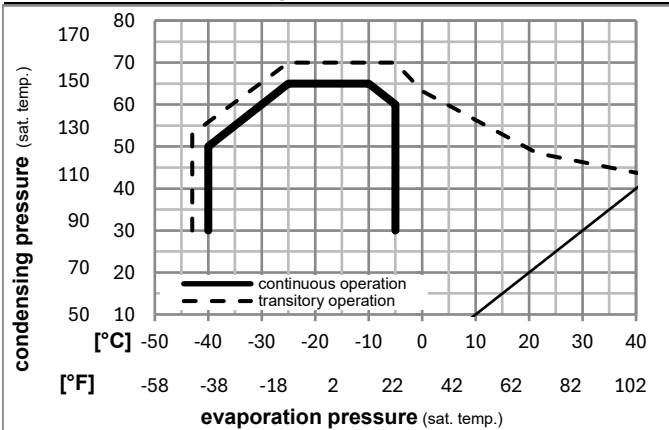
Electrical accessories / wiring diagram



Ambient/ machine room temperatures minimum /maximum

Ambient temperature range: 10 - 43°C / 50 - 110°F
 Machine room temperature range: 10 - 48°C / 50 - 119°F
 Compressor cooling: fan 3m/s

Operation pressure range



Components (protector (f)+ holder (h)+ cover (b): pre assembled)

a3	SC starter kit (550mm)	117-7811
f / h	motor protector assy. (T1118)	117U8006
b	plastic cover + clamp	117U1021

Alternative comp.

a3	SC starter kit (1000mm)	117-7814
a2	potential relay (RVA2AL3R A92)	117-7603
e	run capacitor (10μF, 6.3mm)	117-7121
c	start capacitor (80μF)	117U5373

Noise emission

Operation pressures:	pe: -25°C / -13°F
	pc: 45°C / 113°F
Motor speed appr.:	3500rpm
Lw(A):	58dB(A)

Model

Designation **SCE21CNLX 208-230V/60Hz** Conf. 1 Sales code: **104H8173**

Optimization + standard conditions

R290, 230V/60Hz, CSCR, fan 3m/s, UL

	Evaporating pressure (saturation temperature)				Cooling capacity			COP	EER			Power consumption			ASHRAE LBP
	pe	pc	RGT	Tliq	[W]	[Btu/h]	[kcal/h]		[W/W]	[Btu/Wh]	[kcal/Wh]	P1	I	m	
	[°C]	[°F]	[°C]	[°F]	[W]	[Btu/h]	[kcal/h]	[W/W]	[Btu/Wh]	[kcal/Wh]	[W]	[A]	[kg/h]		
	-23	54	32	32	1099,3	3754	946,1	1,65	5,62	1,42	667,8	3,04	11,13	ASHRAE LBP	
	-10	130	90	90											
	-25	55	32	55	810,3	2767	697,3	1,28	4,36	1,10	634,0	2,90	10,09	cecomaf LBP	
	-13	131	90	131											
	-35	40	20	40	601,9	2055	518,0	1,25	4,26	1,07	482,4	2,33	6,88	EN12900 LBP	
	-31	104	68	104											
	-23	49	4,4	49	913,1	3119	785,9	1,36	4,65	1,17	670,4	3,08	12,65	ARI540 LBP	
	-10	120	40	120											
	-23	41	32	32	1232,9	4211	1061,0	1,88	6,41	1,61	657,1	3,01	12,49	AHAM LBP	
	-10	105	90	90											
	-35	45	32	45	559,9	1912	481,8	1,18	4,02	1,01	475,5	2,34	6,27	opt	
	-31	113	90	113											

Performance tables

R290, 230V/60Hz, CSCR, fan 3m/s, UL

	pe		Cooling capacity			COP	EER		P1	I	m
	[°C]	[°F]	[W]	[Btu/h]	[kcal/h]		[Btu/Wh]	[kcal/Wh]			
[°C / °F]	-40	-40	394,8	1348	339,8	1,00	3,42	0,86	394,6	2,07	4,41
cond. pressure	-34	-30	580,1	1981	499,2	1,20	4,09	1,03	484,6	2,37	6,50
pc= 45/113	-29	-20	804,7	2748	692,5	1,40	4,77	1,20	576,3	2,71	9,05
return gas temp.	-23	-10	1073,4	3666	923,8	1,61	5,50	1,39	666,6	3,07	12,12
RGT= 32/90	-21	-5	1225,9	4187	1055,0	1,73	5,89	1,49	710,2	3,25	13,87
liquid temp	-15	5	1569,7	5361	1350,9	1,98	6,77	1,70	792,4	3,60	17,86
Tliq= 45/113	-5	23	2333,3	7969	2008,0	2,55	8,71	2,20	914,7	4,13	26,86
[°C / °F]	-40	-40	265,6	907	228,5	0,76	2,60	0,66	348,2	1,85	3,27
cond. pressure	-34	-30	439,6	1501	378,3	0,98	3,34	0,84	450,0	2,19	5,44
pc= 55/131	-29	-20	645,1	2203	555,2	1,16	3,95	1,00	557,3	2,59	8,01
return gas temp	-23	-10	886,9	3029	763,3	1,33	4,54	1,14	666,9	3,03	11,06
RGT= 32/90	-21	-5	1022,9	3493	880,3	1,42	4,84	1,22	721,6	3,26	12,79
liquid temp	-15	5	1328,1	4536	1143,0	1,60	5,47	1,38	828,8	3,72	16,70
Tliq= 55/131	-5	23	2002,2	6838	1723,1	1,99	6,80	1,71	1005,5	4,52	25,51