

Model

Designation	SCE23LNDX	220-240V/50Hz 1~	Sales code:	104H8320
-------------	------------------	------------------	-------------	-----------------

Compressor design

Oil type	Polyolester	Refrigerant(s)	R290
Oil viscosity	32cSt	Displacement	23cm ³ / 1,4cu.in
Oil quantity	500cm ³ / 16,9fl.oz	Compressors on pallet	48
Refr. charge - tech. limit	500g / 17,6oz		
Free gas volume comp.	3150cm ³ / 106,5fl.oz		
Weight	14,9kg / 32,8lbs		
Motor protection	1# internal		
Winding resistance main	3,3Ω (at 25°C)		
Winding resistance aux	10,8Ω (at 25°C)		
Max. winding temp.	125°C / 257°F		
Max. discharge temp.	140°C / 284°F		



General - Configurations with SCE23LNDX

	Conf. 1
Motorconfiguration	CSCR
Power supply (nominal)	220-240V/50Hz
Number of phases	1
Voltage range	198-254V
Approvals	VDE, CCC, CB
Starting torque	HST
Note	Starter kit(relay), cover and cord relief are included and pre-assembled.

Applications with SCE23LNDX

	Conf. 1
Refrigerant	R290
Application	LBP
System cooling	fan 3m/s
Hot gas defrost	OK
Long interval pull down	-/-

Electrical data - Configurations with SCE23LNDX

	Conf. 1
Starting device type	relay
Run capacitor	10μF
Start capacitor	60μF
LRA (locked rotor amps / 4s/ U(N))	22,1A
RLA (rated load amps / 1s/ U(N))	3,7A
Cut in current (U(N))	22,1A

Model

Designation

SCE23LNDX

220-240V/50Hz 1~

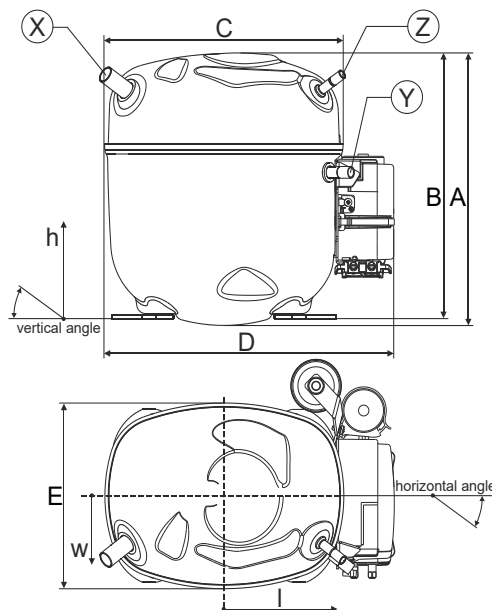
Sales code:

104H8320

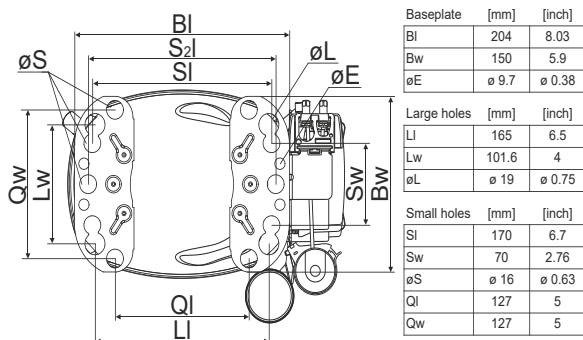
Compressor dimensions

Housing	A Height	236,4mm / 9,31in
	B Height	230,6mm / 9,08in
	C Length shell	217mm / 8,54in
	D Length w. cover	263,4mm / 10,37in
	E Width	161,1mm / 6,34in
	F Width with equipment	199mm / 7,83in

Connectors	Suction		Discharge		Process	
	X	Y	Z			
Diameter [mm]	øi 12,81-12,99	øi 8,11-8,29	øi 6,11-6,29			
(i:inside, o:outside) [in]	øi 0,5-0,51	øi 0,32-0,33	øi 0,24-0,25			
Material	steel/CU	copper	copper			
Horizontal angle ±2°	37°	37°	37°			
Vertical angle ±2°	36°	0°	36°			
Position l/h/w [mm]	-111/212/57	116/127/81	110/94/72			
[in]	-4,4/8,3/2,2	4,5/5/3,2	4,3/3,7/2,8			
Straight tube l. [mm]	12	12	12			
[in]	0,5	0,5	0,5			



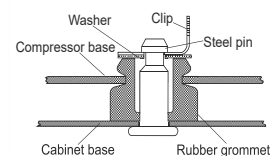
Compressor fixation



Bolt joint



Snap-on



Mounting accessories

Mounting accessories	one comp.	multi pack
Bolt joint M6 ø16mm	118-1917	118-1918
Bolt joint ø1/4" ø16mm	118-1946	
Bolt joint ø1/4" ø19mm	118-1949	
Snap-on ø7,3 ø16mm	118-1947	118-1919

Application notes

Provision for PE Grounding is located at the PE Stamp on the compressor

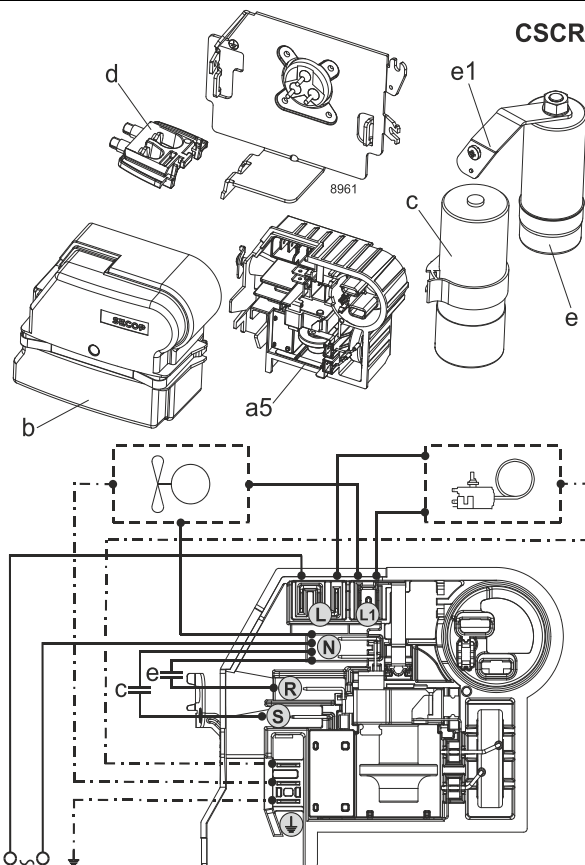
Model

Designation	SCE23LNDX	220-240V/50Hz	Conf. 1	Sales code:	104H8320
-------------	------------------	----------------------	----------------	-------------	-----------------

Configuration

Motorconfiguration	CSCR
Power supply (nominal)	220-240V/50Hz 1~
Refrigerant	R290
Application	LBP
Voltage range	198-254V
Starting torque	HST
Approvals	VDE
	CCC
	CB

Electrical accessories / wiring diagram



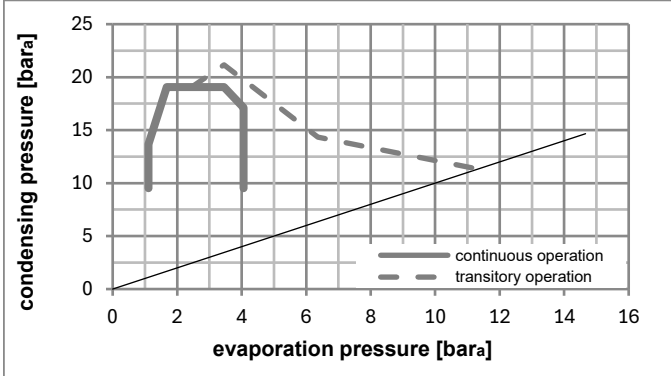
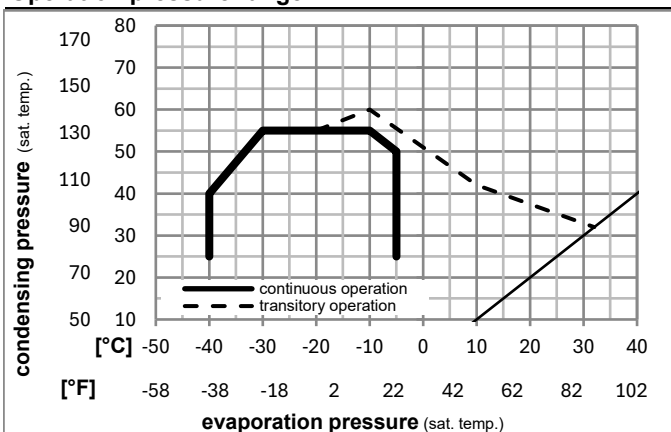
Ambient/ machine room temperatures minimum /maximum

Ambient temperature range: 10 - 43°C / 50 - 110°F

Machine room temperature range: 10 - 48°C / 50 - 119°F

Compressor cooling: fan 3m/s

Operation pressure range



Components (Starter kit (a5)+cover (b) +cord relief (d): pre assembled)

a5	SC starter kit	117U8101
b	cover terminal board + clamp	117U1036
c	start capacitor (60μF)	117U5351
e	run capacitor (10μF, 6.3mm)	117-7166
e1	retaining clamp	117-0313
	screw M4x8mm	117-0301
d	cord relief	103N1007

Model

Designation **SCE23LNDX 220-240V/50Hz** Conf. 1 Sales code: **104H8320**

Optimization + standard conditions

R290, 220V/50Hz, CSCR, fan 3m/s, VDE, CCC, CB

	Evaporating pressure (saturation temperature)				Cooling capacity			COP	EER	P1	Power consumption		Ref. mass flow	
	pe	pc	RGT	Tliq	[W]	[Btu/h]	[kcal/h]				[A]	[kg/h]		
[°C]	-23	54	32	32	1038,5	3546	893,7	1,57	5,37	1,35	660,3	3,27	10,52	ASHRAE LBP
[°F]	-10	130	90	90										
[°C]	-25	55	32	55	772,7	2639	665,0	1,22	4,16	1,05	633,9	3,16	9,62	cecomaf LBP
[°F]	-13	131	90	131										
[°C]	-35	40	20	40	615,1	2101	529,4	1,29	4,41	1,11	475,9	2,50	7,03	EN12900 LBP
[°F]	-31	104	68	104										
[°C]	-23	49	4,4	49	872,9	2981	751,2	1,35	4,63	1,17	644,2	3,20	12,09	ARI540 LBP
[°F]	-10	120	40	120										
[°C]	-23	41	32	32	1204,0	4112	1036,2	1,96	6,70	1,69	613,7	3,07	12,19	AHAM LBP
[°F]	-10	105	90	90										
[°C]	-35	45	32	45	580,2	1982	499,3	1,19	4,07	1,02	487,4	2,55	6,50	opt
[°F]	-31	113	90	113										

Performance tables

R290, 220V/50Hz, CSCR, fan 3m/s, VDE, CCC, CB

	pe		Cooling capacity			COP	EER	P1	I	m	
	[°C]	[°F]	[W]	[Btu/h]	[kcal/h]						
[°C / °F]	-35	-31	580,2	1982	499,3	1,19	4,07	1,02	487,4	2,55	6,50
cond. pressure	-35	-31	580,2	1982	499,3	1,19	4,07	1,02	487,4	2,55	6,50
pc= 45/113	-30	-22	754,7	2577	649,5	1,38	4,73	1,19	545,2	2,78	8,48
return gas temp.	-25	-13	963,9	3292	829,5	1,58	5,41	1,36	608,5	3,04	10,87
RGT= 32/90	-20	-4	1207,1	4122	1038,8	1,79	6,12	1,54	673,9	3,33	13,67
liquid temp	-15	5	1483,4	5066	1276,6	2,01	6,86	1,73	738,2	3,61	16,88
Tliq= 45/113	-5	23	2131,9	7281	1834,7	2,51	8,57	2,16	849,6	4,10	24,55
[°C / °F]	-35	-31	469,2	1602	403,8	0,96	3,26	0,82	491,0	2,56	5,80
cond. pressure	-35	-31	469,2	1602	403,8	0,96	3,26	0,82	491,0	2,56	5,80
pc= 55/131	-30	-22	601,2	2053	517,4	1,08	3,69	0,93	556,8	2,83	7,46
return gas temp	-25	-13	772,7	2639	665,0	1,22	4,16	1,05	633,9	3,16	9,62
RGT= 32/90	-20	-4	982,9	3357	845,9	1,37	4,67	1,18	718,9	3,53	12,29
liquid temp	-15	5	1231,0	4204	1059,4	1,52	5,20	1,31	808,5	3,93	15,48
Tliq= 55/131	-5	23	1837,1	6274	1581,0	1,86	6,35	1,60	987,8	4,74	23,40