

Model

Designation	SCE25LNDX	220-240V/50Hz 1~	Sales code:	104H8420
-------------	------------------	------------------	-------------	-----------------

Compressor design

Oil type	Polyolester	Refrigerant(s)	R290
Oil viscosity	32cSt	Displacement	25cm ³ / 1,53cu.in
Oil quantity	500cm ³ / 16,9fl.oz	Compressors on pallet	48
Refr. charge - tech. limit	500g / 17,6oz		
Free gas volume comp.	3150cm ³ / 106,5fl.oz		
Weight	14,9kg / 32,8lbs		
Motor protection	1# internal		
Winding resistance main	3,3Ω (at 25°C)		
Winding resistance aux	10,8Ω (at 25°C)		
Max. winding temp.	125°C / 257°F		
Max. discharge temp.	140°C / 284°F		



General - Configurations with SCE25LNDX

	Conf. 1
Motorconfiguration	CSCR
Power supply (nominal)	220-240V/50Hz
Number of phases	1
Voltage range	198-254V
Approvals	VDE, CCC, CB
Starting torque	HST
Note	Starter kit(relay), cover and cord relief are included and pre-assembled.

Applications with SCE25LNDX

	Conf. 1
Refrigerant	R290
Application	LBP
System cooling	fan 3m/s
Hot gas defrost	OK
Long interval pull down	-/-

Electrical data - Configurations with SCE25LNDX

	Conf. 1
Starting device type	relay
Run capacitor	10μF
Start capacitor	60μF
LRA (locked rotor amps / 4s/ U(N))	22,1A
RLA (rated load amps / 1s/ U(N))	3,7A
Cut in current (U(N))	22,1A

Model

Designation

SCE25LNDX

220-240V/50Hz 1~

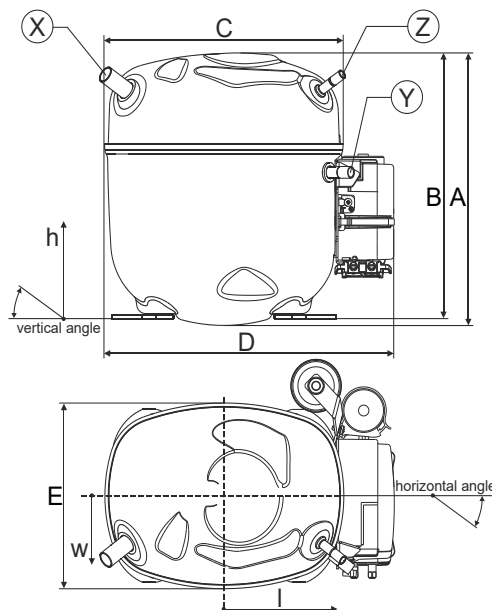
Sales code:

104H8420

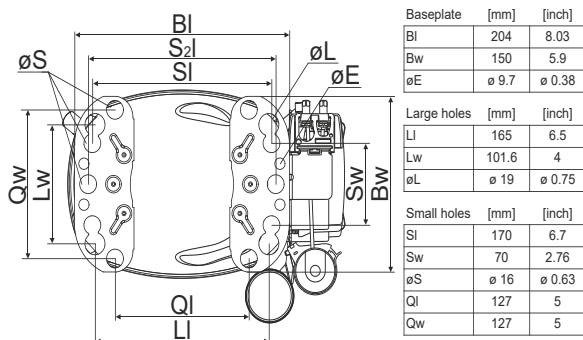
Compressor dimensions

Housing	A Height	236,4mm / 9,31in
	B Height	230,6mm / 9,08in
	C Length shell	217mm / 8,54in
	D Length w. cover	263,4mm / 10,37in
	E Width	161,1mm / 6,34in
	F Width with equipment	199mm / 7,83in

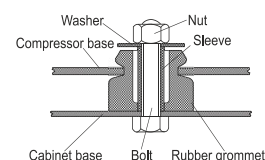
Connectors	Suction		Discharge		Process	
	X		Y		Z	
Diameter [mm]	øi 12,81-12,99		øi 8,11-8,29		øi 6,11-6,29	
(i:inside, o:outside) [in]	øi 0,5-0,51		øi 0,32-0,33		øi 0,24-0,25	
Material	steel/CU		copper		copper	
Horizontal angle ±2°	37°		37°		37°	
Vertical angle ±2°	36°		0°		36°	
Position l/h/w [mm]	-111/212/57		116/127/81		110/94/72	
[in]	-4,4/8,3/2,2		4,5/5/3,2		4,3/3,7/2,8	
Straight tube l. [mm]	12		12		12	
[in]	0,5		0,5		0,5	



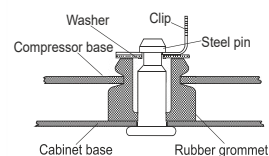
Compressor fixation



Bolt joint



Snap-on



Mounting accessories

Mounting accessories	one comp.	multi pack
Bolt joint M6 ø16mm	118-1917	118-1918
Bolt joint ø1/4" ø16mm	118-1946	
Bolt joint ø1/4" ø19mm	118-1949	
Snap-on ø7,3 ø16mm	118-1947	118-1919

Application notes

Provision for PE Grounding is located at the PE Stamp on the compressor

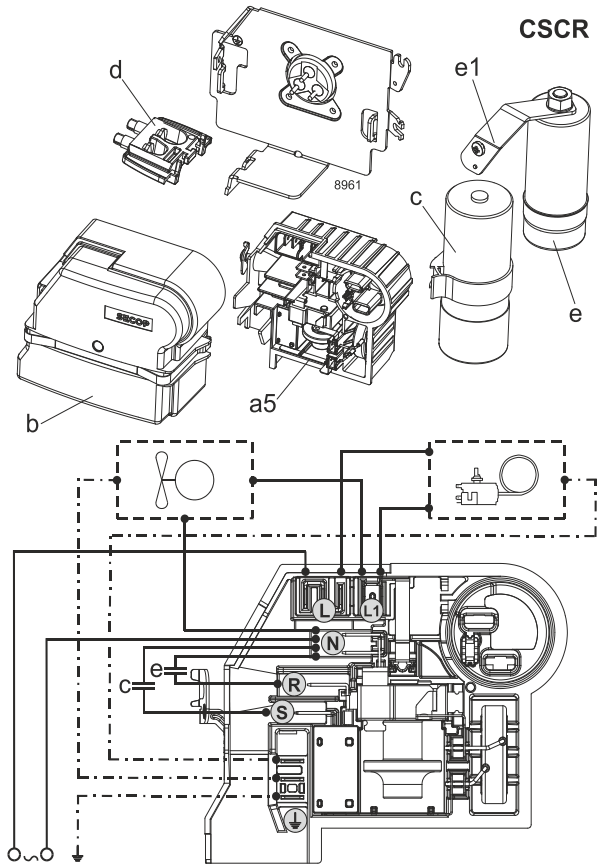
Model

Designation	SCE25LNDX	220-240V/50Hz	Conf. 1	Sales code:	104H8420
-------------	------------------	----------------------	----------------	-------------	-----------------

Configuration

Motorconfiguration	CSCR
Power supply (nominal)	220-240V/50Hz 1~
Refrigerant	R290
Application	LBP
Voltage range	198-254V
Starting torque	HST
Approvals	VDE
	CCC
	CB

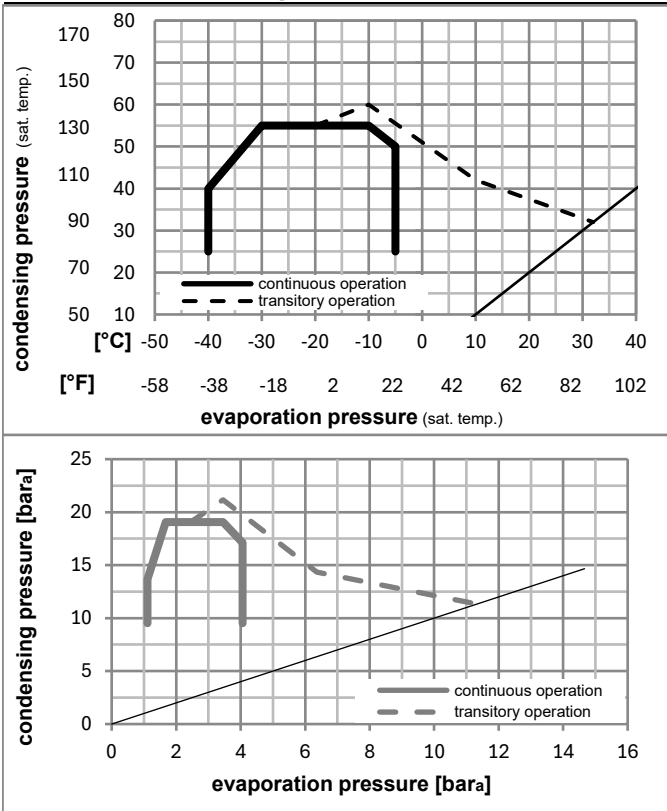
Electrical accessories / wiring diagram



Ambient/ machine room temperatures minimum /maximum

Ambient temperature range:	10 - 43°C / 50 - 110°F
Machine room temperature range:	10 - 48°C / 50 - 119°F
Compressor cooling:	fan 3m/s

Operation pressure range



Components (Starter kit (a5)+cover (b) +cord relief (d): pre assembled)

a5	SC starter kit	117U8101
b	cover terminal board + clamp	117U1036
c	start capacitor (60μF)	117U5351
e	run capacitor (10μF, 6.3mm)	117-7166
e1	retaining clamp	117-0313
	screw M4x8mm	117-0301
d	cord relief	103N1007

Model

Designation **SCE25LNDX 220-240V/50Hz** Conf. 1 Sales code: **104H8420**

Optimization + standard conditions

R290, 220V/50Hz, CSCR, fan 3m/s, VDE, CCC, CB

	Evaporating pressure (saturation temperature)				Cooling capacity			COP	EER	P1	Power consumption		ASHRAE LBP	
	pe	pc	RGT	Tliq	[W]	[Btu/h]	[kcal/h]				I	m		
	[°C]	[°F]	[°C]	[°F]	[W]	[Btu/h]	[kcal/h]	[W/W]	[Btu/Wh]	[kcal/Wh]	[W]	[A]	[kg/h]	
	-23	54	32	32	1175,7	4015	1011,8	1,62	5,52	1,39	727,7	3,56	11,91	ASHRAE LBP
	-10	130	90	90										
	-25	55	32	55	880,7	3008	757,9	1,26	4,30	1,08	699,4	3,44	10,97	cecomaf LBP
	-13	131	90	131										
	-35	40	20	40	676,2	2309	581,9	1,26	4,30	1,08	536,7	2,75	7,73	EN12900 LBP
	-31	104	68	104										
	-23	49	4,4	49	966,0	3299	831,4	1,36	4,66	1,17	708,6	3,48	13,38	ARI540 LBP
	-10	120	40	120										
	-23	41	32	32	1309,6	4473	1127,1	1,91	6,52	1,64	686,0	3,38	13,26	AHAM LBP
	-10	105	90	90										
	-35	45	32	45	642,0	2193	552,5	1,18	4,02	1,01	545,6	2,79	7,19	opt
	-31	113	90	113										

Performance tables

R290, 220V/50Hz, CSCR, fan 3m/s, VDE, CCC, CB

	pe		Cooling capacity			COP	EER	P1	I	m	
	[°C]	[°F]	[W]	[Btu/h]	[kcal/h]						
[°C / °F]	-35	-31	642,0	2193	552,5	1,18	4,02	1,01	545,6	2,79	7,19
cond. pressure	-35	-31	642,0	2193	552,5	1,18	4,02	1,01	545,6	2,79	7,19
pc= 45/113	-30	-22	836,6	2857	720,0	1,37	4,69	1,18	609,7	3,06	9,40
return gas temp.	-25	-13	1057,3	3611	909,9	1,56	5,34	1,35	676,3	3,34	11,92
RGT= 32/90	-20	-4	1307,3	4465	1125,0	1,76	6,00	1,51	743,5	3,63	14,80
liquid temp	-15	5	1589,8	5429	1368,2	1,96	6,71	1,69	809,1	3,92	18,09
Tliq= 45/113	-5	23	2265,9	7738	1950,0	2,44	8,34	2,10	927,3	4,45	26,09
[°C / °F]	-35	-31	529,0	1807	455,3	0,99	3,38	0,85	535,3	2,74	6,54
cond. pressure	-35	-31	529,0	1807	455,3	0,99	3,38	0,85	535,3	2,74	6,54
pc= 55/131	-30	-22	690,4	2358	594,2	1,13	3,85	0,97	612,2	3,06	8,56
return gas temp	-25	-13	880,7	3008	757,9	1,26	4,30	1,08	699,4	3,44	10,97
RGT= 32/90	-20	-4	1103,1	3767	949,3	1,39	4,74	1,19	794,5	3,86	13,80
liquid temp	-15	5	1360,9	4648	1171,2	1,52	5,19	1,31	895,7	4,32	17,11
Tliq= 55/131	-5	23	1996,2	6817	1717,9	1,80	6,15	1,55	1107,8	5,29	25,43