

## Model

Designation **CU KLF7.7CND R290 230/1/50 CAP**



Sales code: 314H6004

Engineering code: CUKLF77CND0CE

## Application Data

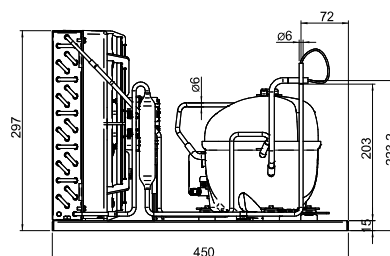
Power supply 220-240V / 50Hz 1~  
 Refrigerants R290  
 Refr. charge - tech. limit 200g / 7,1oz  
 Starter HST / capillary tube or expansion valve  
 Sound pressure (10m)

## Generic data

Voltage range 198 - 254V / 50Hz  
 Refrigerant R290  
 Application LBP+MBP  
  
 Rated performance pe=-10°C, Tsuc=20°C, Tamb=25°C, subccoling: 0K  
 Cooling capacity 660W / 2255Btu/h  
 Power consumption 312,2W  
 Current consumption 1,9A  
 COP/EER 2,11 / 7,22Btu/Wh  
  
 Approvals Eco design (EU) 2015/1095,  
 CE, UK CA, VDE

## Compressor

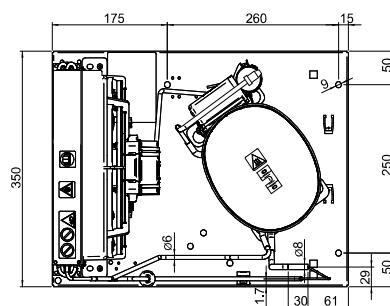
Designation **KLF7.7CND**  
 Motor configuration CSIR  
 Locked rotor amperage 12,3A  
 Rated load amperage 2,1A  
 Winding resistance main 8,4Ω  
 Winding resistance aux 11,9Ω  
 Oil quantity 170cm<sup>3</sup> / 5,7fl.oz  
 Oil type POE  
 Horsepower rating 1/3 HP



## Dimensions

### Condensing unit

Height x Width x Depth 297 x 350 x 450 [mm] / 11,7 x 13,8 x 17,7 [in]  
 Weight 15,9kg / 35,1lbs  
 Suction adapter OD ø8mm / 1/3in  
 Discharge adapter OD ø6mm / 1/4in  
 Process connector ø6,2mm / 0,24in



### Package data

Height x Width x Depth 340 x 372 x 570 [mm] / 13,4 x 14,6 x 22,4 [in]  
 Weight 18,9kg / 41,7lbs

## Model

Designation **CU KLF7.7CND R290 230/1/50 CAP**

Sales code: 314H6004

Engineering code: CUKLF77CND0CE

## Components Condensing-Unit / Spare Parts

Component	Type	Spare part code number
Compressor code	KLF7.7CND	106H2800
Condenser	Condenser (3 rows x 11 tubes)	314S0010
Fan motor	30W	314S0016
Blade code	ø254mm 22°	314S0026
Air flow	551,4m³/h	
Receiver code	not installed	-/-
Suction valve code	OD ø8mm / 1/3in	-/-
Liquid valve code	OD ø6mm / 1/4in	-/-

## Compressor starting equipment Spare part code number

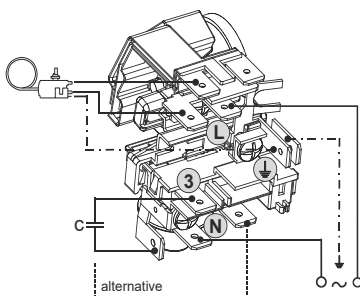
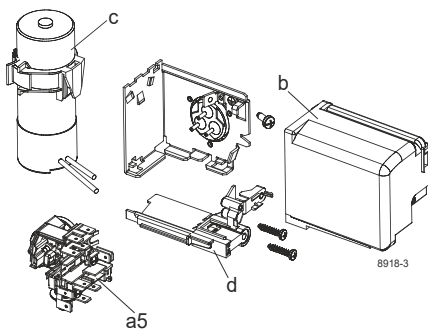
pos. a5 - current relay TY (T0377/L6 117U7071

pos. c - start capacitor (80µF, 6.3mV 117U5001

pos. b, d - cover + clamp + screws(5 103N1060

## Wiring Sketch Compressor

### CSIR



## Model

Designation	<b>CU KLF7.7CND R290 230/1/50 CAP</b>	Sales code:	314H6004
		Engineering code:	CUKLF77CND0CE

## Cooling performance - Conf. 1

Power supply	220-240V / 50Hz 1~	Voltage range	198 - 254V / 50Hz
Refr. charge - tech. limit	200g / 7,1oz		
Starter	HST / capillary tube or expansion valve		
Motor configuration	CSIR		
Refrigerant	R290		
Application	LBP+MBP		
Approvals	Eco design (EU) 2015/1095, CE, UK CA, VDE		

<b>ambient temperature</b>	<b>[°C / °F]</b>	<b>25 / 77</b>							(suction gas temperature [°C / °F]: 20 / 68, subcooling: 0K)
evaporating temperature	[°C / °F]	-35 / -31	-30 / -22	-25 / -13	-20 / -4	-10 / 14	0 / 32	10 / 50	
cooling capacity	[W]	260	322	394	474	660	871	1099	
COP	[W/W]	1,38	1,52	1,67	1,82	2,12	2,36	2,54	
cooling capacity	[Btu/h]	886	1099	1344	1620	2254	2975	3753	
power consumption	[W]	189	212	236	261	312	369	433	
current consumption	[A]	1,6	1,6	1,7	1,8	1,9	2,1	2,4	

<b>ambient temperature</b>	<b>[°C / °F]</b>	<b>32 / 90</b>							(suction gas temperature [°C / °F]: 20 / 68, subcooling: 0K)
evaporating temperature	[°C / °F]	-35 / -31	-30 / -22	-25 / -13	-20 / -4	-10 / 14	0 / 32	10 / 50	
cooling capacity	[W]	239	296	362	437	607	802	1011	
COP	[W/W]	1,15	1,29	1,43	1,58	1,84	2,06	2,19	
cooling capacity	[Btu/h]	816	1012	1237	1491	2075	2738	3454	
power consumption	[W]	207	230	253	277	330	390	461	
current consumption	[A]	1,6	1,7	1,7	1,8	2	2,2	2,5	

<b>ambient temperature</b>	<b>[°C / °F]</b>	<b>38 / 100</b>							(suction gas temperature [°C / °F]: 20 / 68, subcooling: 0K)
evaporating temperature	[°C / °F]	-35 / -31	-30 / -22	-25 / -13	-20 / -4	-10 / 14	0 / 32		
cooling capacity	[W]	218	271	332	402	561	741		
COP	[W/W]	1,01	1,13	1,26	1,39	1,63	1,81		
cooling capacity	[Btu/h]	743	925	1135	1372	1915	2532		
power consumption	[W]	216	239	263	289	345	410		
current consumption	[A]	1,6	1,7	1,8	1,8	2	2,3		

<b>ambient temperature</b>	<b>[°C / °F]</b>	<b>43 / 109</b>							(suction gas temperature [°C / °F]: 20 / 68, subcooling: 0K)
evaporating temperature	[°C / °F]	-35 / -31	-30 / -22	-25 / -13	-20 / -4	-10 / 14	0 / 32		
cooling capacity	[W]	199	249	307	372	522	691		
COP	[W/W]	0,91	1,02	1,14	1,25	1,46	1,61		
cooling capacity	[Btu/h]	679	851	1049	1271	1781	2361		
power consumption	[W]	219	244	270	297	357	428		
current consumption	[A]	1,7	1,7	1,8	1,9	2,1	2,4		