

Model

Designation **CU SCE18CNLX R290 230/1/50 CAP**



Sales code: 314H4001
Engineering code: CUSCE18CNLXCE

Application Data

Power supply 220-240V / 50Hz 1~
Refrigerants R290
Refr. charge - tech. limit 550g / 19,4oz
Starter HST / capillary tube or expansion valve
Sound pressure (10m) 33,3dB(A)

Generic data

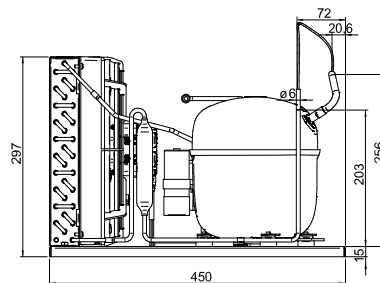
Voltage range 198 - 254V / 50Hz
Refrigerant R290
Application LBP

Rated performance pe=-25°C, Tsuc=20°C, Tamb=25°C, subccoling: 0K
Cooling capacity 703W / 2400Btu/h
Power consumption 507,6W
Current consumption 3A
COP/EER 1,38 / 4,73Btu/Wh

Approvals Eco design (EU) 2015/1095,
CE, UK CA, VDE

Compressor

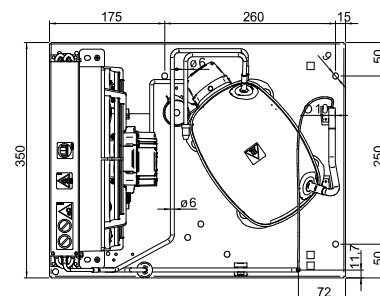
Designation **SCE18CNLX**
Motor configuration CSIR
Locked rotor amperage 17,47A
Rated load amperage 2,92A
Winding resistance main 4,07Ω
Winding resistance aux 15,88Ω
Oil quantity 550cm³ / 18,6fl.oz
Oil type POE
Horsepower rating 3/4 HP



Dimensions

Condensing unit

Height x Width x Depth 297 x 350 x 450 [mm] / 11,7 x 13,8 x 17,7 [in]
Weight 21,8kg / 48,1lbs
Suction adapter OD ø10mm / 2/5in
Discharge adapter OD ø6mm / 1/4in
Process connector ø6,2mm / 0,24in



Package data

Height x Width x Depth 340 x 372 x 570 [mm] / 13,4 x 14,6 x 22,4 [in]
Weight 24,8kg / 54,7lbs

Model

Designation **CU SCE18CNLX R290 230/1/50 CAP**

Sales code: 314H4001

Engineering code: CUSCE18CNLXCE

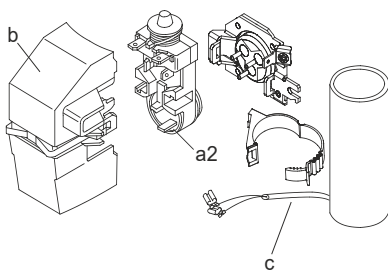
Components Condensing-Unit / Spare Parts

Component	Type	Spare part code number
Compressor code	SCE18CNLX	104H8848
Condenser	Condenser (3 rows x 11 tubes)	314S0010
Fan motor	30W	314S0016
Blade code	ø254mm 22°	314S0026
Air flow	551,4m³/h	
Receiver code	not installed	-/-
Suction valve code	OD ø10mm / 2/5in	-/-
Liquid valve code	OD ø6mm / 1/4in	-/-

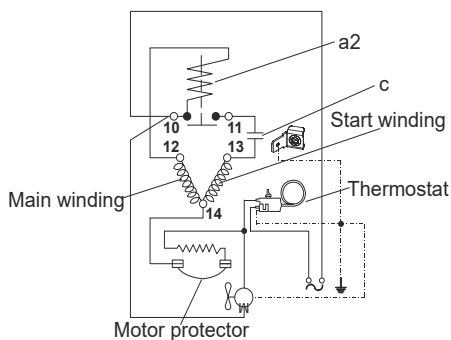
Compressor starting equipment	Spare part code number
pos. a2 - assy. relay + ext. protector	117U7405
pos. c - start capacitor (80µF)	117U5017
pos. d - cord relief	103N1004
pos. b - plastic cover + clamp	117U1033

Wiring Sketch Compressor

CSIR



8893



Model

Designation	CU SCE18CNLX R290 230/1/50 CAP	Sales code:	314H4001
		Engineering code:	CUSCE18CNLXCE

Cooling performance - Conf. 1

Power supply	220-240V / 50Hz 1~	Voltage range	198 - 254V / 50Hz
Refr. charge - tech. limit	550g / 19,4oz		
Starter	HST / capillary tube or expansion valve		
Motor configuration	CSIR		
Refrigerant	R290		
Application	LBP		
Approvals	Eco design (EU) 2015/1095, CE, UK CA, VDE		

ambient temperature	[°C / °F]	25 / 77							(suction gas temperature [°C / °F]: 20 / 68, subcooling: 0K)
evaporating temperature	[°C / °F]	-40 / -40	-35 / -31	-30 / -22	-25 / -13	-20 / -4	-10 / 14	-5 / 23	
cooling capacity	[W]	379	462	571	702	851	1176	1340	
COP	[W/W]	1,14	1,19	1,28	1,38	1,49	1,65	1,69	
cooling capacity	[Btu/h]	1295	1578	1951	2399	2907	4016	4575	
power consumption	[W]	333	389	447	508	571	712	792	
current consumption	[A]	2,6	2,7	2,9	3	3,2	3,7	4	

ambient temperature	[°C / °F]	32 / 90							(suction gas temperature [°C / °F]: 20 / 68, subcooling: 0K)
evaporating temperature	[°C / °F]	-40 / -40	-35 / -31	-30 / -22	-25 / -13	-20 / -4	-10 / 14	-5 / 23	
cooling capacity	[W]	330	411	514	635	770	1055	1196	
COP	[W/W]	0,99	1,05	1,13	1,22	1,31	1,41	1,42	
cooling capacity	[Btu/h]	1127	1403	1755	2169	2628	3604	4083	
power consumption	[W]	334	393	455	520	590	750	841	
current consumption	[A]	2,6	2,7	2,9	3	3,3	3,9	4,4	

ambient temperature	[°C / °F]	38 / 100							(suction gas temperature [°C / °F]: 20 / 68, subcooling: 0K)
evaporating temperature	[°C / °F]	-40 / -40	-35 / -31	-30 / -22	-25 / -13	-20 / -4	-10 / 14		
cooling capacity	[W]	289	367	463	574	695	945		
COP	[W/W]	0,88	0,94	1,01	1,08	1,14	1,2		
cooling capacity	[Btu/h]	987	1252	1580	1959	2372	3226		
power consumption	[W]	329	392	459	530	608	786		
current consumption	[A]	2,6	2,7	2,8	3,1	3,4	4,2		

ambient temperature	[°C / °F]	43 / 109							(suction gas temperature [°C / °F]: 20 / 68, subcooling: 0K)
evaporating temperature	[°C / °F]	-40 / -40	-35 / -31	-30 / -22	-25 / -13	-20 / -4			
cooling capacity	[W]	254	327	417	518	627			
COP	[W/W]	0,78	0,84	0,9	0,96	1			
cooling capacity	[Btu/h]	866	1117	1423	1770	2141			
power consumption	[W]	324	390	462	539	624			
current consumption	[A]	2,5	2,7	2,9	3,2	3,5			