

**Model**

Designation	<b>DLE4CN</b>	<b>115-127V/60Hz 1~</b>	Sales code:	<b>102H3485</b>
-------------	---------------	-------------------------	-------------	-----------------

**Compressor design**

Oil type	Polyolester	Refrigerant(s)	<b>R290</b>
Oil viscosity	32cSt	Displacement	4cm <sup>3</sup> / 0,24cu.in
Oil quantity	221cm <sup>3</sup> / 7,5fl.oz	Compressors on pallet	80
Refr. charge - tech. limit	150g / 5,3oz		
Free gas volume comp.	1465cm <sup>3</sup> / 49,5fl.oz		
Weight	8kg / 17,6lbs		
Motor protection	1# internal		
Winding resistance main	2,72Ω (at 25°C)		
Winding resistance aux	6,35Ω (at 25°C)		
Max. winding temp.	125°C / 257°F		
Max. discharge temp.	120°C / 248°F		



**General - Configurations with DLE4CN**

	<b>Conf. 1</b>
Motorconfiguration	RSCR
Power supply (nominal)	115V/60Hz
Number of phases	1
Voltage range	95-135V
Approvals	UL
Starting torque	LST
Note	Electrical equipment is included and pre-assembled to compressor.

**Applications with DLE4CN**

	<b>Conf. 1</b>
Refrigerant	R290
Application	LBP+MBP
System cooling	static
Hot gas defrost	OK
Long interval pull down	OK

**Electrical data - Configurations with DLE4CN**

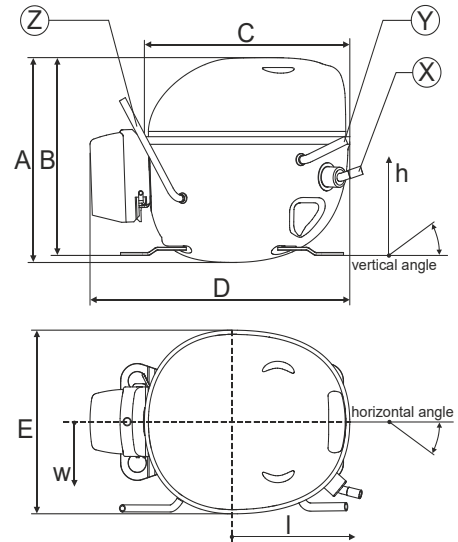
	<b>Conf. 1</b>
Starting device type	PTC
Run capacitor	15μF
Start capacitor	-/-
LRA (locked rotor amps / 4s)	12,7A
RLA (rated load amps / 1s)	2,4A
Cut in current	20,9A
IP class	21

**Model**

Designation	<b>DLE4CN</b>	115-127V/60Hz 1~	Sales code:	<b>102H3485</b>
-------------	---------------	------------------	-------------	-----------------

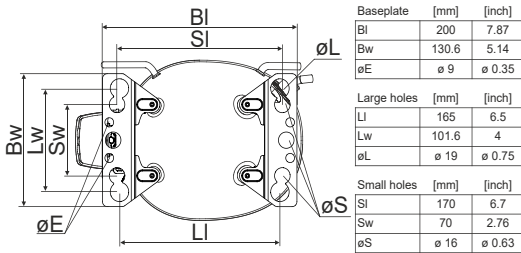
**Compressor dimensions**

<b>Housing</b>	A Height	174mm / 6,85in
	B Height	168mm / 6,61in
	C Length shell	183mm / 7,2in
	D Length w. cover	232mm / 9,13in
	E Width	156mm / 6,14in

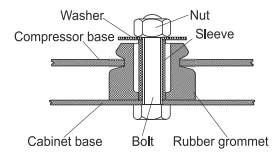


Connectors		Suction	Discharge	Process
		X	Y	Z
Diameter	[mm]	øi 8,11-8,29	øi 6,41-6,59	øi 6,4-6,6
(i:inside, o:outside)	[in]	øi 0,32-0,33	øi 0,25-0,26	øi 0,25-0,26
Material		copper	copper	copper
Horizontal angle	±2°	10°	0°	0°
Vertical angle	±2°	18°	25°	119°
Position l/h/w	[mm]	135/77/67	98/96/72	-98/133/73
	[in]	5,3/3/2,6	3,8/3,8/2,8	-3,9/5,2/2,9
Straight tube l.	[mm]	12	12	12
	[in]	0,5	0,5	0,5

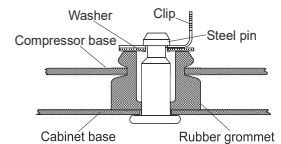
**Compressor fixation**



**Bolt joint**



**Snap-on**



Mounting accessories	one comp.	multi pack
Bolt joint   M6   ø16mm	118-1917	118-1918
Bolt joint   ø1/4"   ø16mm	118-1946	
Bolt joint   ø1/4"   ø19mm	118-1949	
Snap-on   ø7,3   ø16mm	118-1947	118-1919

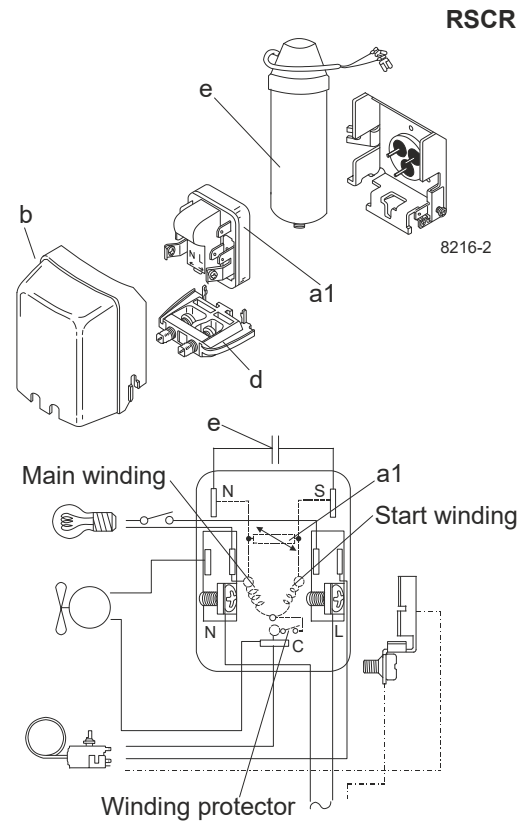
**Model**

Designation	<b>DLE4CN</b>	<b>115V/60Hz</b>	<b>Conf. 1</b>	Sales code:	<b>102H3485</b>
-------------	---------------	------------------	----------------	-------------	-----------------

**Configuration**

Motorconfiguration	RSCR
Power supply (nominal)	115V/60Hz 1~
Refrigerant	R290
Application	LBP+MBP
Voltage range	95-135V
Starting torque	LST
Approvals	UL SA3693

**Electrical accessories / wiring diagram**

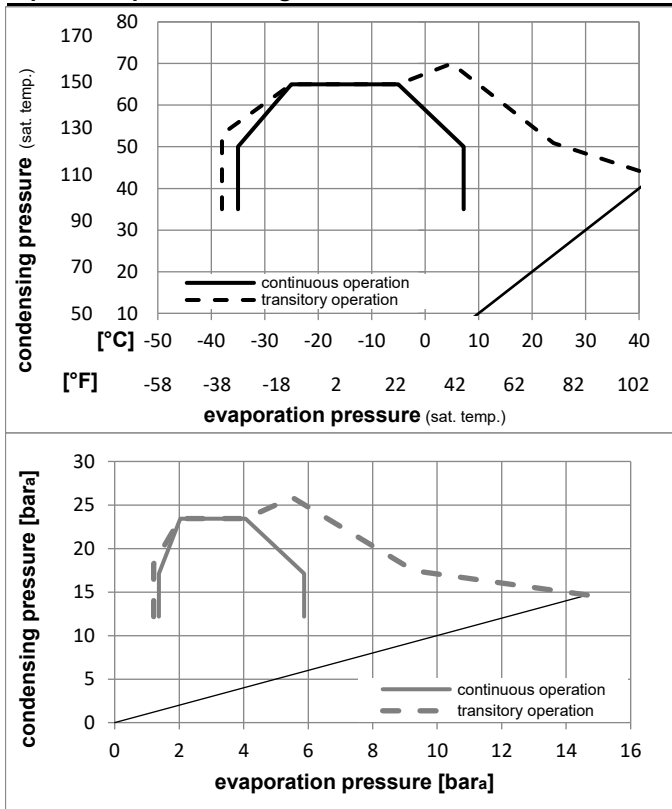


**Ambient temperatures / system cooling**

Ambient temperature min.:	10°C / 50°F
Ambient temperature max.:	43°C / 110°F

System cooling (n/a: outside limits)			
T ambient	LBP	MBP	HBP
32°C / 90°F	static	static	n/a
38°C / 100°F	static	static	n/a
43°C / 110°F	fan 3m/s	fan 3m/s	n/a

**Operation pressure range**



Components (already pre-assembled)

a1	e-PTC starter	103N0058
e	run capacitor (15μF, 6.3mm)	117-7118
b	plastic cover	103N0492
d	cord relief	103N1010
	bracket for run capacitor	117-0300
	screw M4x8mm	117-0301

Alternative components

a1	e-PTC starter (115V, 50Ohm, 6.3mm, 4.8-cap)	103N0057
e	run capacitor (15μF, 4.8mm)	117-7120
b	plastic cover	103N0492
d	cord relief	103N1010
	bracket for run capacitor	117-0300
	screw M4x8mm	117-0301

**Model**

Designation **DLE4CN 115V/60Hz** Conf. 1 Sales code: **102H3485**

**Optimization + standard conditions**

115V/60Hz 1~, RSCR, fan 3m/s, UL

Evaporating pressure (saturation temperature)		Condensing pressure (saturation temperature)				Power consumption									ASHRAE LBP		
Return gas temp.		Liquid temp.		Cooling capacity			COP			EER			Current consumption			Ref. mass flow m	
pe	pc	RGT	Tliq	[W]	[Btu/h]	[kcal/h]	[W/W]	[Btu/Wh]	[kcal/Wh]	P1	I	m					
[°C]	[°C]									[W]	[A]	[kg/h]					
[°F]	[°F]																
-23,3	54,4	32,2	32,2	233,9	799	201,3	1,58	5,40	1,36	147,8	1,33	2,37		ASHRAE LBP			
-10	130	90	90														
-25	55	32	55	175,1	598	150,7	1,22	4,17	1,05	143,4	1,29	2,18		cecomaf LBP			
-13	131	89,6	131														
-35	40	20	40	134,6	460	115,9	1,19	4,07	1,03	112,9	1,06	1,54		EN12900 LBP			
-31	104	68	104														
-6,66	54,4	35	46,1	422,8	1444	363,8	2,19	7,49	1,89	192,9	1,74	4,82		ASHRAE MBP			
20	130	95	115														
-10	55	32	55	334,5	1142	287,9	1,81	6,17	1,56	185,1	1,67	4,23		cecomaf MBP			
14	131	89,6	131														
-10	45	20	45	376,4	1285	323,9	2,21	7,54	1,90	170,4	1,57	4,62		EN12900 MBP			
14	113	68	113														

**Performance tables**

115V/60Hz 1~, RSCR, fan 3m/s, UL

pe	Cooling capacity			COP			EER			P1	I	m
	[°C]	[°F]	[W]	[Btu/h]	[kcal/h]	[W/W]	[Btu/Wh]	[kcal/Wh]				
[°C / °F]	-35	-31	128,3	438	110,4	1,12	3,82	0,96	114,6	1,07	1,44	
cond. pressure	-23,3	-10	225,3	769	193,9	1,59	5,44	1,37	141,6	1,30	2,54	
pc= 45/113	-15	5	321,4	1097	276,6	2,01	6,85	1,73	160,2	1,47	3,66	
return gas temp.	-9,4	15	400,3	1367	344,5	2,33	7,97	2,01	171,5	1,58	4,58	
RGT= 32/90	-3,9	25	492,7	1683	424,0	2,72	9,29	2,34	181,2	1,66	5,68	
liquid temp	0	32	566,0	1933	487,1	3,03	10,35	2,61	186,7	1,69	6,57	
Tliq= 45/113	7,2	45	722,9	2469	622,2	3,73	12,74	3,21	193,8	1,71	8,49	
[°C / °F]	-35	-31	105,5	360	90,8	0,91	3,09	0,78	116,6	1,08	1,30	
cond. pressure	-23,3	-10	189,3	646	162,9	1,28	4,36	1,10	148,1	1,33	2,36	
pc= 55/131	-15	5	272,8	932	234,8	1,59	5,43	1,37	171,5	1,55	3,43	
return gas temp	-9,4	15	342,0	1168	294,3	1,83	6,26	1,58	186,6	1,68	4,33	
RGT= 32/90	-3,9	25	423,5	1446	364,4	2,11	7,21	1,82	200,7	1,80	5,40	
liquid temp	0	32	488,5	1668	420,4	2,33	7,96	2,01	209,6	1,87	6,27	
Tliq= 55/131	7,2	45	628,6	2147	541,0	2,81	9,59	2,42	223,8	1,96	8,19	