

Model

Designation	DLE4.8CNT	220-240V/50Hz 1~ 208-230V/60Hz 1~	Sales code:	102H4587
-------------	------------------	-----------------------------------	-------------	-----------------

Compressor design

Oil type	Polyolester	Refrigerant(s)	R290
Oil viscosity	32cST	Displacement	4,8cm ³ / 0,29cu.in
Oil quantity	223cm ³ / 7,6fl.oz	Compressors on pallet	100
Refr. charge - tech. limit	150g / 5,3oz		
Free gas volume comp.	1325cm ³ / 44,8fl.oz		
Weight	8,5kg / 18,7lbs		
Motor protection	1# internal		
Winding resistance main	10,84Ω (at 25°C)		
Winding resistance aux	11,36Ω (at 25°C)		
Max. winding temp.	125°C / 257°F		
Max. discharge temp.	130°C / 266°F		



General - Configurations with DLE4.8CNT

	Conf. 1	Conf. 2	Conf. 3	Conf. 4	Conf. 5
Motorconfiguration	CSIR	CSIR	RSIR	RSCR	RSCR
Power supply (nominal)	208-230V/60Hz	220-240V/50Hz	220-240V/50Hz	208-230V/60Hz	220-240V/50Hz
Number of phases	1	1	1	1	1
Voltage range	187-253V	187-254V	187-254V	187-253V	187-254V
Approvals	UL, CCC	UL, CCC	UL, CCC	UL, CCC	UL, CCC
Starting torque	HST	HST	LST	LST	LST
Note	- / -				

Applications with DLE4.8CNT

	Conf. 1	Conf. 2	Conf. 3	Conf. 4	Conf. 5
Refrigerant	R290	R290	R290	R290	R290
Application	LBP+MBP	LBP+MBP	LBP+MBP	LBP+MBP	LBP+MBP
System cooling	fan 3m/s	fan 3m/s	fan 3m/s	fan 3m/s	fan 3m/s
Hot gas defrost	OK	OK	OK	OK	OK
Long interval pull down	OK	OK	OK	OK	OK

Electrical data - Configurations with DLE4.8CNT

	Conf. 1	Conf. 2	Conf. 3	Conf. 4	Conf. 5
Starting device type	relay	relay	PTC	PTC	PTC
Run capacitor	-/ -	-/ -	-/ -	5μF	5μF
Start capacitor	80μF	80μF	-/ -	-/ -	-/ -
LRA (locked rotor amps / 4s)	9,34A	9,65A	9,18A	8,39A	9,18A
RLA (rated load amps / 1s)	1,67A	1,91A	1,91A	1,65A	1,7A
Cut in current	9,34A	9,65A	14,3A	13,34A	14,3A

Model

Designation

DLE4.8CNT

220-240V/50Hz 1~ 208-230V/60Hz 1~

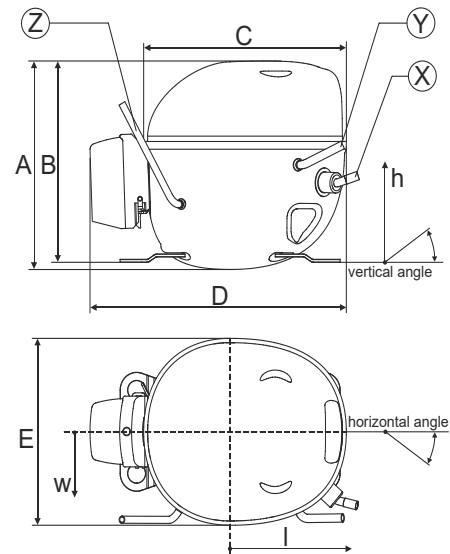
Sales code:

102H4587

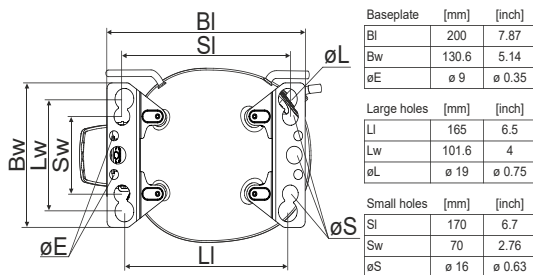
Compressor dimensions

Housing	A Height	174mm / 6,85in
	B Height	168mm / 6,61in
	C Length shell	183mm / 7,2in
	D Length w. cover	232mm / 9,13in
	E Width	156mm / 6,14in

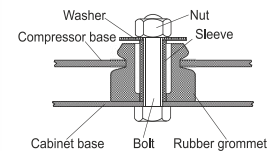
Connectors		Suction	Discharge	Process
		X	Y	Z
Diameter	[mm]	øi 8,11-8,29	øi 6,41-6,59	øi 6,4-6,6
	(i:inside, o:outside) [in]	øi 0,32-0,33	øi 0,25-0,26	øi 0,25-0,26
Material		copper	copper	copper
Horizontal angle	±2°	10°	0°	0°
Vertical angle	±2°	18°	25°	119°
Position l/h/w	[mm]	135/77/67	98/96/72	-98/133/73
	[in]	5,3/3/2,6	3,8/3,8/2,8	-3,9/5,2/2,9
Straight tube l.	[mm]	12	12	12
	[in]	0,5	0,5	0,5



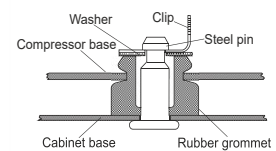
Compressor fixation



Bolt joint



Snap-on



Mounting accessories

	one comp.	multi pack
Bolt joint M6 ø16mm	118-1917	118-1918
Bolt joint ø1/4" ø16mm	118-1946	
Bolt joint ø1/4" ø19mm	118-1949	
Snap-on ø7,3 ø16mm	118-1947	118-1919

Application notes

LRA value on compressor label and datasheet may differ due to different test conditions for UL approval.

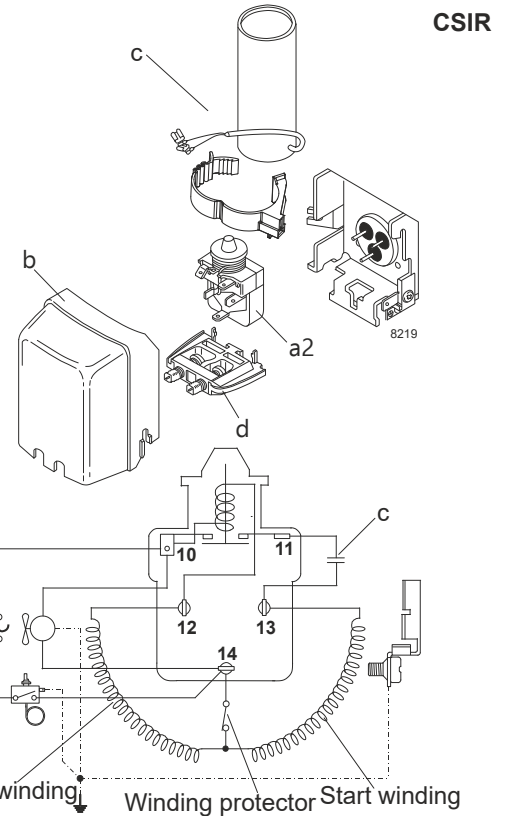
Model

Designation	DLE4.8CNT	208-230V/60Hz	Conf. 1	Sales code:	102H4587
-------------	------------------	----------------------	----------------	-------------	-----------------

Configuration

Motorconfiguration	CSIR	
Power supply (nominal)	208-230V/60Hz 1~	
Refrigerant	R290	
Application	LBP+MBP	
Voltage range	187-253V	
Starting torque	HST	
Approvals	UL	SA3693
	CCC	

Electrical accessories / wiring diagram

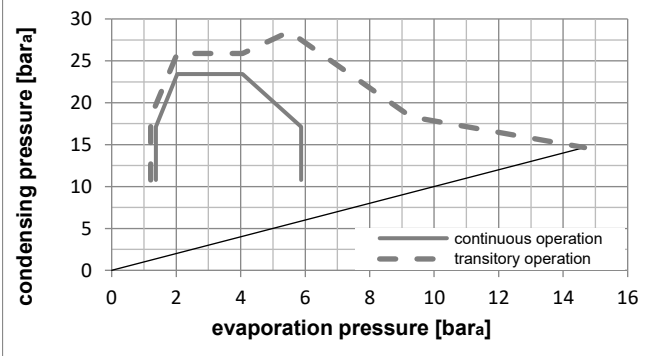
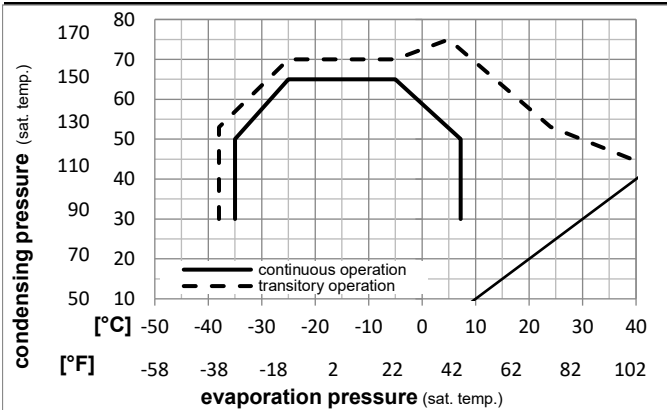


Ambient temperatures / system cooling

Ambient temperature min.:	10°C / 50°F
Ambient temperature max.:	43°C / 110°F

System cooling (n/a: outside limits)			
T ambient	LBP	MBP	HBP
32°C / 90°F	fan 3m/s	fan 3m/s	n/a
38°C / 100°F	fan 3m/s	fan 3m/s	n/a
43°C / 110°F	fan 3m/s	fan 3m/s	n/a

Operation pressure range



Components

a2	relay	117U7002
c	start capacitor (80µF)	117U5015
b	plastic cover	103N0491
d	cord relief	103N1010

Model

Designation **DLE4.8CNT 208-230V/60Hz** Conf. 1 Sales code: **102H4587**

Optimization + standard conditions

R290, 230V/60Hz, CSIR, fan 3m/s, UL, CCC

		Evaporating pressure (saturation temperature)				Condensing pressure (saturation temperature)			Return gas temp.		Liquid temp.		Cooling capacity			COP	EER	Power consumption		
		pe	pc	RGT	Tliq	[W]	[Btu/h]	[kcal/h]	[W/W]	[Btu/Wh]	[kcal/Wh]	P1	I	Current consumption		Ref. mass flow				
[°C]	[°F]	[°C]	[°F]	[°C]	[°F]							[W]	[A]	[kg/h]	ASHRAE LBP					
-23	-10	54	130	32	90	282,3	964	243,0	1,51	5,16	1,30	186,9	1,25	2,86	ASHRAE LBP					
-25	-13	55	131	32	90	211,9	724	182,3	1,17	3,99	1,01	181,3	1,23	2,64	cecomaf LBP					
-35	-31	40	104	20	68	160,3	547	138,0	1,15	3,91	0,99	139,8	1,13	1,83	EN12900 LBP					
-7	20	54	130	35	95	501,9	1714	432,0	2,03	6,93	1,75	247,3	1,44	5,73	ASHRAE MBP					
-10	14	55	131	32	90	398,2	1360	342,7	1,68	5,75	1,45	236,7	1,41	5,04	cecomaf MBP					
-10	14	45	113	20	68	443,3	1514	381,5	2,03	6,94	1,75	218,1	1,34	5,44	EN12900 MBP					

Performance tables

R290, 230V/60Hz, CSIR, fan 3m/s, UL, CCC

	pe		Cooling capacity			COP	EER	P1	I	m	
	[°C]	[°F]	[W]	[Btu/h]	[kcal/h]	[W/W]	[Btu/Wh]	[kcal/Wh]	[W]	[A]	[kg/h]
[°C / °F]	-35	-31	153,5	524	132,1	1,08	3,69	0,93	142,2	1,13	1,72
cond. pressure	-23	-10	267,2	912	229,9	1,50	5,13	1,29	178,0	1,22	3,02
pc= 45/113	-15	5	379,0	1294	326,2	1,86	6,35	1,60	203,8	1,30	4,31
return gas temp.	-9	15	471,4	1610	405,7	2,15	7,33	1,85	219,6	1,35	5,40
RGT= 32/90	-4	25	580,5	1982	499,6	2,49	8,50	2,14	233,3	1,40	6,69
liquid temp	0	32	667,7	2280	574,6	2,77	9,45	2,38	241,2	1,42	7,74
Tliq= 45/113	7,2	45	856,0	2923	736,7	3,41	11,64	2,93	251,2	1,46	10,06
[°C / °F]	-35	-31	127,2	435	109,5	0,86	2,95	0,74	147,4	1,14	1,57
cond. pressure	-23	-10	228,6	781	196,7	1,22	4,17	1,05	187,4	1,25	2,85
pc= 55/131	-15	5	326,3	1114	280,8	1,49	5,10	1,29	218,4	1,35	4,10
return gas temp	-9	15	406,9	1390	350,2	1,70	5,82	1,47	238,7	1,41	5,15
RGT= 32/90	-4	25	502,2	1715	432,2	1,95	6,65	1,68	257,8	1,48	6,41
liquid temp	0	32	578,6	1976	497,9	2,14	7,32	1,84	269,9	1,52	7,43
Tliq= 55/131	7,2	45	744,2	2542	640,5	2,58	8,80	2,22	288,9	1,60	9,70

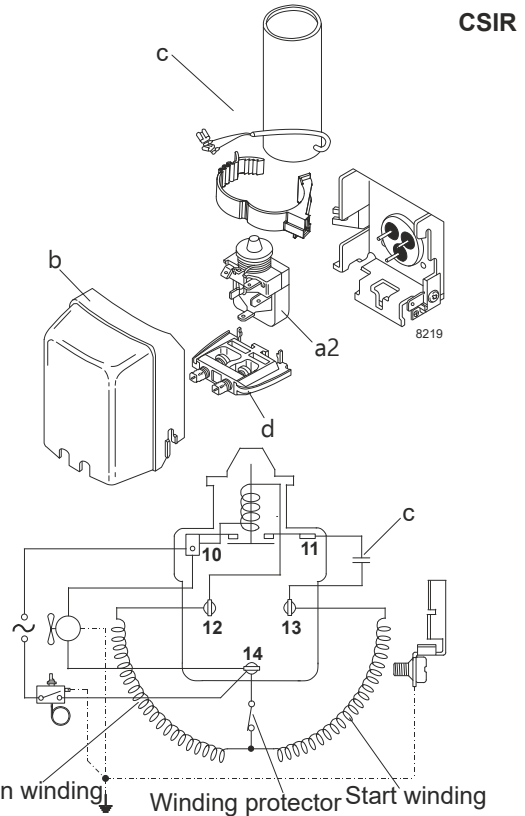
Model

Designation	DLE4.8CNT	220-240V/50Hz	Conf. 2	Sales code:	102H4587
-------------	------------------	----------------------	----------------	-------------	-----------------

Configuration

Motorconfiguration	CSIR	
Power supply (nominal)	220-240V/50Hz 1~	
Refrigerant	R290	
Application	LBP+MBP	
Voltage range	187-254V	
Starting torque	HST	
Approvals	UL	SA3693
	CCC	

Electrical accessories / wiring diagram

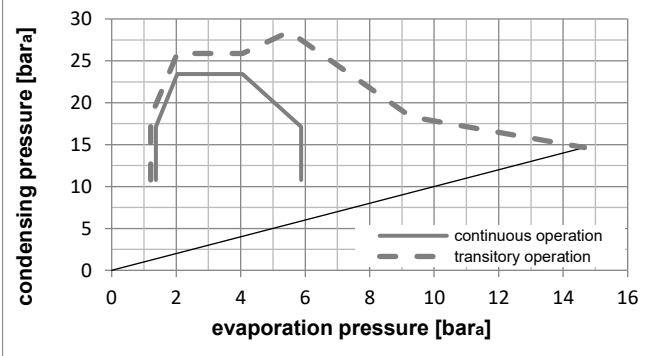
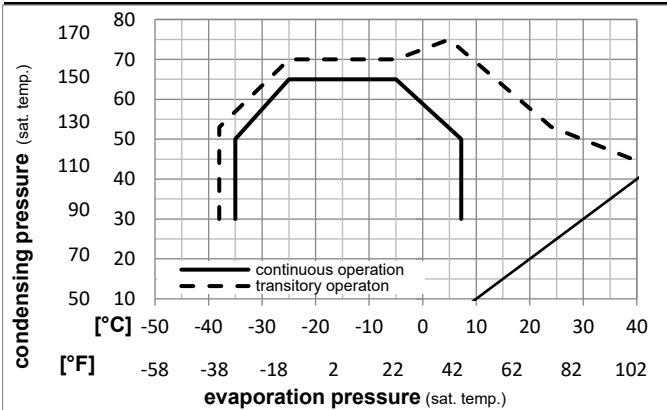


Ambient temperatures / system cooling

Ambient temperature min.:	10°C / 50°F
Ambient temperature max.:	43°C / 110°F

System cooling (n/a: outside limits)			
T ambient	LBP	MBP	HBP
32°C / 90°F	fan 3m/s	fan 3m/s	n/a
38°C / 100°F	fan 3m/s	fan 3m/s	n/a
43°C / 110°F	fan 3m/s	fan 3m/s	n/a

Operation pressure range



Components

a2	relay	117U7002
c	start capacitor (80µF)	117U5015
b	plastic cover	103N0491
d	cord relief	103N1010

Model

Designation **DLE4.8CNT** **220-240V/50Hz** Conf. 2 Sales code: **102H4587**

Optimization + standard conditions

R290, 220V/50Hz, CSIR, fan 3m/s, UL, CCC

		Evaporating pressure (saturation temperature)				Condensing pressure (saturation temperature)					Power consumption				
		Return gas temp.			Liquid temp.		Cooling capacity			COP	EER	Current consumption		Ref. mass flow	
		pe	pc	RGT	Tliq	[W]	[Btu/h]	[kcal/h]	[W/W]	[Btu/Wh]	[kcal/Wh]	P1	I	m	
[°C]	[°F]	[°C]	[°F]	[°C]	[°C]							[W]	[A]	[kg/h]	
-23	54	32	32	232,0	792	199,6	1,38	4,72	1,19	167,9	1,37	2,35	ASHRAE LBP		
-10	130	90	90												
-25	55	32	55	174,0	594	149,7	1,06	3,63	0,92	163,5	1,35	2,17	cecomaf LBP		
-13	131	90	131												
-35	40	20	40	132,5	452	114,0	1,04	3,57	0,90	126,9	1,25	1,51	EN12900 LBP		
-31	104	68	104												
-7	54	35	46	417,7	1426	359,4	1,95	6,68	1,68	213,7	1,52	4,76	ASHRAE MBP		
20	130	95	115												
-10	55	32	55	330,5	1129	284,4	1,61	5,48	1,38	205,9	1,49	4,18	cecomaf MBP		
14	131	90	131												
-10	45	20	45	367,8	1256	316,6	1,94	6,62	1,67	189,6	1,43	4,52	EN12900 MBP		
14	113	68	113												

Performance tables

R290, 220V/50Hz, CSIR, fan 3m/s, UL, CCC

	pe		Cooling capacity			COP	EER	P1	I	m	
	[°C]	[°F]	[W]	[Btu/h]	[kcal/h]	[W/W]	[Btu/Wh]	[kcal/Wh]	[W]	[A]	[kg/h]
[°C / °F]	-35	-31	127,0	434	109,3	0,98	3,36	0,85	129,1	1,25	1,42
cond. pressure	-23	-10	219,5	750	188,9	1,37	4,69	1,18	160,0	1,34	2,48
pc= 45/113	-15	5	313,2	1070	269,5	1,75	5,96	1,50	179,4	1,39	3,56
return gas temp.	-9	15	391,4	1337	336,8	2,05	7,01	1,77	190,7	1,43	4,48
RGT= 32/90	-4	25	484,0	1653	416,5	2,41	8,24	2,08	200,6	1,46	5,58
liquid temp	0	32	558,2	1906	480,4	2,70	9,22	2,32	206,7	1,49	6,47
Tliq= 45/113	7,2	45	718,7	2454	618,5	3,33	11,38	2,87	215,6	1,53	8,44
[°C / °F]	-35	-31	105,3	360	90,6	0,79	2,69	0,68	133,9	1,27	1,30
cond. pressure	-23	-10	187,8	641	161,6	1,12	3,81	0,96	168,4	1,37	2,34
pc= 55/131	-15	5	269,7	921	232,1	1,40	4,79	1,21	192,2	1,44	3,39
return gas temp	-9	15	337,8	1154	290,7	1,63	5,56	1,40	207,4	1,50	4,28
RGT= 32/90	-4	25	418,7	1430	360,3	1,89	6,45	1,62	221,8	1,55	5,34
liquid temp	0	32	483,7	1652	416,3	2,09	7,14	1,80	231,4	1,59	6,21
Tliq= 55/131	7,2	45	624,7	2134	537,7	2,52	8,61	2,17	247,9	1,67	8,14

Model

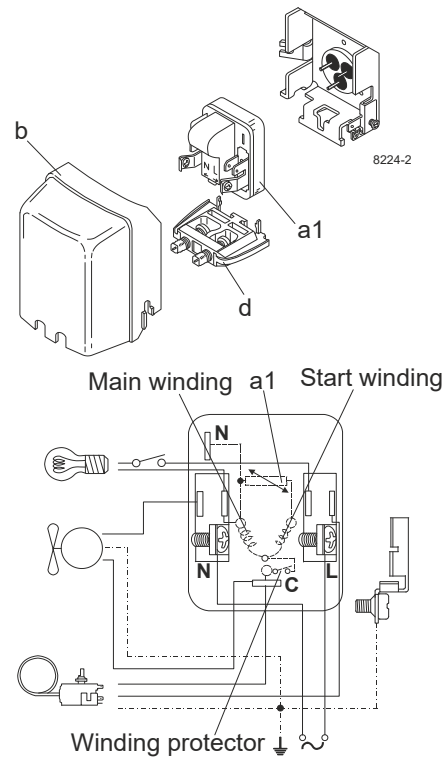
Designation	DLE4.8CNT	220-240V/50Hz	Conf. 3	Sales code:	102H4587
-------------	------------------	----------------------	----------------	-------------	-----------------

Configuration

Motorconfiguration	RSIR	
Power supply (nominal)	220-240V/50Hz 1~	
Refrigerant	R290	
Application	LBP+MBP	
Voltage range	187-254V	
Starting torque	LST	
Approvals	UL	SA3693
	CCC	

Electrical accessories / wiring diagram

RSIR

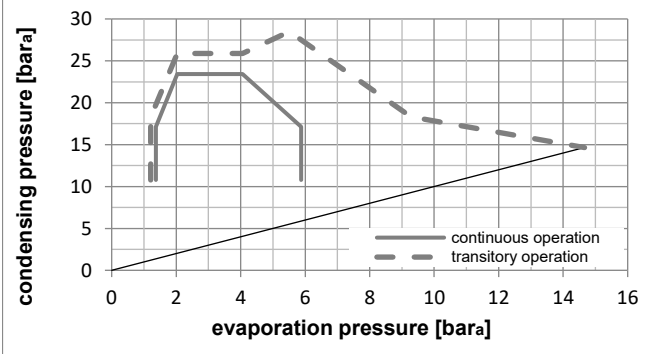
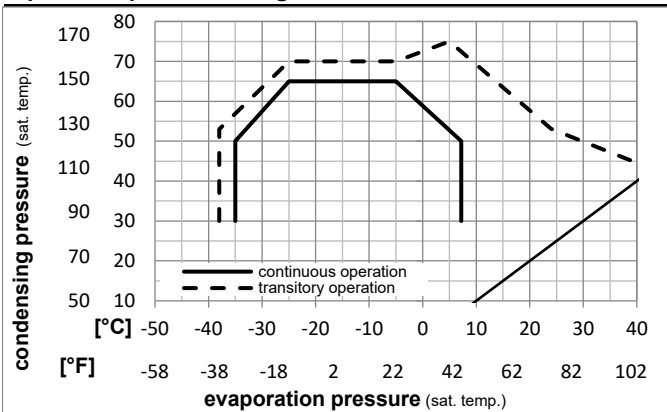


Ambient temperatures / system cooling

Ambient temperature min.:	10°C / 50°F
Ambient temperature max.:	43°C / 110°F

System cooling (n/a: outside limits)			
T ambient	LBP	MBP	HBP
32°C / 90°F	fan 3m/s	fan 3m/s	n/a
38°C / 100°F	fan 3m/s	fan 3m/s	n/a
43°C / 110°F	fan 3m/s	fan 3m/s	n/a

Operation pressure range



Components

a1	e-PTC starter (220V, 25Ohm, 4.8mm)	103N0050
b	plastic cover	103N0491
d	cord relief	103N1010

Model

Designation **DLE4.8CNT 220-240V/50Hz** Conf. 3 Sales code: **102H4587**

Optimization + standard conditions

R290, 220V/50Hz, RSIR, fan 3m/s, UL, CCC

		Evaporating pressure (saturation temperature)				Condensing pressure (saturation temperature)					Power consumption				
		Return gas temp.			Liquid temp.		Cooling capacity			COP	EER	Current consumption		Ref. mass flow	
		pe	pc	RGT	Tliq	[W]	[Btu/h]	[kcal/h]	[W/W]	[Btu/Wh]	[kcal/Wh]	P1	I	m	
[°C]	[°F]	[°C]	[°F]	[°C]	[°C]							[W]	[A]	[kg/h]	
-23	54	32	32	232,0	792	199,6	1,38	4,72	1,19	167,9	1,37	2,35	ASHRAE LBP		
-10	130	90	90												
-25	55	32	55	174,0	594	149,7	1,06	3,63	0,92	163,5	1,35	2,17	cecomaf LBP		
-13	131	90	131												
-35	40	20	40	132,5	452	114,0	1,04	3,57	0,90	126,9	1,25	1,51	EN12900 LBP		
-31	104	68	104												
-7	54	35	46	417,7	1426	359,4	1,95	6,68	1,68	213,7	1,52	4,76	ASHRAE MBP		
20	130	95	115												
-10	55	32	55	330,5	1129	284,4	1,61	5,48	1,38	205,9	1,49	4,18	cecomaf MBP		
14	131	90	131												
-10	45	20	45	367,8	1256	316,6	1,94	6,62	1,67	189,6	1,43	4,52	EN12900 MBP		
14	113	68	113												

Performance tables

R290, 220V/50Hz, RSIR, fan 3m/s, UL, CCC

	pe		Cooling capacity			COP	EER	P1			I	m
	[°C]	[°F]	[W]	[Btu/h]	[kcal/h]	[W/W]	[Btu/Wh]	[kcal/Wh]	[W]	[A]	[kg/h]	
[°C / °F]	-35	-31	127,0	434	109,3	0,98	3,36	0,85	129,1	1,25	1,42	
cond. pressure	-23	-10	219,5	750	188,9	1,37	4,69	1,18	160,0	1,34	2,48	
pc= 45/113	-15	5	313,2	1070	269,5	1,75	5,96	1,50	179,4	1,39	3,56	
return gas temp.	-9	15	391,4	1337	336,8	2,05	7,01	1,77	190,7	1,43	4,48	
RGT= 32/90	-4	25	484,0	1653	416,5	2,41	8,24	2,08	200,6	1,46	5,58	
liquid temp	0	32	558,2	1906	480,4	2,70	9,22	2,32	206,7	1,49	6,47	
Tliq= 45/113	7,2	45	718,7	2454	618,5	3,33	11,38	2,87	215,6	1,53	8,44	
[°C / °F]	-35	-31	105,3	360	90,6	0,79	2,69	0,68	133,9	1,27	1,30	
cond. pressure	-23	-10	187,8	641	161,6	1,12	3,81	0,96	168,4	1,37	2,34	
pc= 55/131	-15	5	269,7	921	232,1	1,40	4,79	1,21	192,2	1,44	3,39	
return gas temp	-9	15	337,8	1154	290,7	1,63	5,56	1,40	207,4	1,50	4,28	
RGT= 32/90	-4	25	418,7	1430	360,3	1,89	6,45	1,62	221,8	1,55	5,34	
liquid temp	0	32	483,7	1652	416,3	2,09	7,14	1,80	231,4	1,59	6,21	
Tliq= 55/131	7,2	45	624,7	2134	537,7	2,52	8,61	2,17	247,9	1,67	8,14	

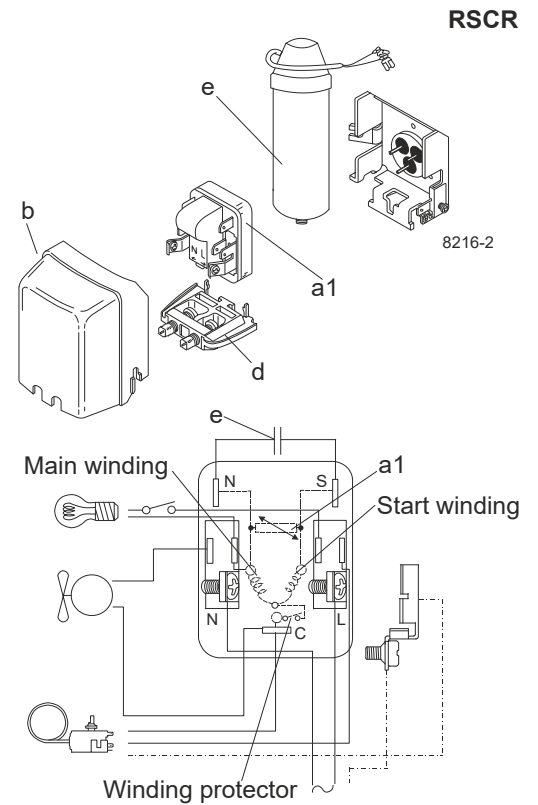
Model

Designation	DLE4.8CNT	208-230V/60Hz	Conf. 4	Sales code:	102H4587
-------------	------------------	----------------------	----------------	-------------	-----------------

Configuration

Motorconfiguration	RSCR	
Power supply (nominal)	208-230V/60Hz 1~	
Refrigerant	R290	
Application	LBP+MBP	
Voltage range	187-253V	
Starting torque	LST	
Approvals	UL	SA3693
	CCC	

Electrical accessories / wiring diagram

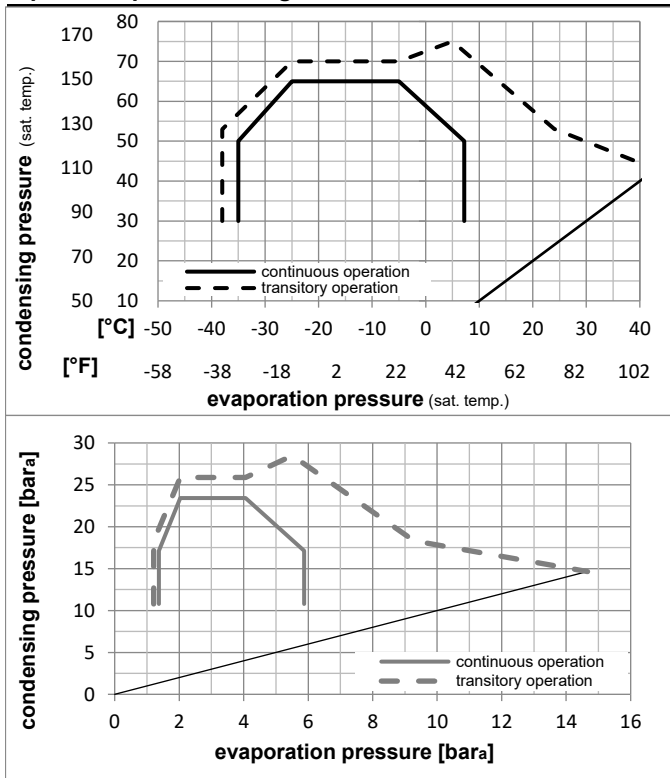


Ambient temperatures / system cooling

Ambient temperature min.:	10°C / 50°F
Ambient temperature max.:	43°C / 110°F

System cooling (n/a: outside limits)			
T ambient	LBP	MBP	HBP
32°C / 90°F	fan 3m/s	fan 3m/s	n/a
38°C / 100°F	fan 3m/s	fan 3m/s	n/a
43°C / 110°F	fan 3m/s	fan 3m/s	n/a

Operation pressure range



Components

a1	e-PTC starter (220V, 250hm, 4.8mm)	103N0050
e	run capacitor (5μF, 4.8mm)	117-7129
b	plastic cover	103N0491
d	cord relief bracket for run capacitor	103N1010
	screw M4x8mm	117-0301

Model

Designation **DLE4.8CNT** **208-230V/60Hz** Conf. 4 Sales code: **102H4587**

Optimization + standard conditions

R290, 230V/60Hz, RSCR, fan 3m/s, UL, CCC

		Evaporating pressure (saturation temperature)				Condensing pressure (saturation temperature)						Power consumption			
		Return gas temp.		Liquid temp.		Cooling capacity		COP	EER		P1	I	Ref. mass flow		
		pe	pc	RGT	Tliq	[W]	[Btu/h]	[kcal/h]	[W/W]	[Btu/Wh]	[kcal/Wh]	[W]	[A]	[kg/h]	
[°C]	[°F]	[°C]	[°F]	[°C]	[°F]										
-23	54	32	32	282,4	965	243,1	1,59	5,44	1,37	177,3	1,16	2,86	ASHRAE LBP		
-10	130	90	90												
-25	55	32	55	212,0	724	182,4	1,23	4,21	1,06	172,1	1,15	2,64	cecomaf LBP		
-13	131	90	131												
-35	40	20	40	160,3	548	138,0	1,20	4,11	1,04	133,3	1,08	1,83	EN12900 LBP		
-31	104	68	104												
-7	54	35	46	502,3	1716	432,3	2,15	7,33	1,85	233,9	1,32	5,73	ASHRAE MBP		
20	130	95	115												
-10	55	32	55	398,5	1361	343,0	1,78	6,08	1,53	224,0	1,29	5,04	cecomaf MBP		
14	131	90	131												
-10	45	20	45	443,5	1515	381,7	2,15	7,33	1,85	206,5	1,24	5,45	EN12900 MBP		
14	113	68	113												

Performance tables

R290, 230V/60Hz, RSCR, fan 3m/s, UL, CCC

	pe		Cooling capacity			COP	EER	P1	I	m	
	[°C]	[°F]	[W]	[Btu/h]	[kcal/h]	[W/W]	[Btu/Wh]				[kcal/Wh]
[°C / °F]	-35	-31	153,6	524	132,2	1,13	3,87	0,98	135,5	1,08	1,72
cond. pressure	-23	-10	267,3	913	230,0	1,58	5,40	1,36	169,0	1,14	3,02
pc= 45/113	-15	5	379,2	1295	326,3	1,96	6,70	1,69	193,2	1,20	4,31
return gas temp.	-9	15	471,7	1611	406,0	2,27	7,75	1,95	207,9	1,24	5,40
RGT= 32/90	-4	25	580,9	1984	499,9	2,63	8,99	2,26	220,8	1,28	6,70
liquid temp	0	32	668,2	2282	575,0	2,93	10,00	2,52	228,2	1,30	7,75
Tliq= 45/113	7,2	45	856,7	2926	737,3	3,61	12,31	3,10	237,6	1,33	10,07
[°C / °F]	-35	-31	127,3	435	109,5	0,91	3,10	0,78	140,4	1,09	1,57
cond. pressure	-23	-10	228,7	781	196,8	1,29	4,39	1,11	177,8	1,16	2,85
pc= 55/131	-15	5	326,5	1115	281,0	1,58	5,39	1,36	206,9	1,24	4,11
return gas temp	-9	15	407,2	1391	350,5	1,80	6,16	1,55	225,9	1,29	5,15
RGT= 32/90	-4	25	502,6	1716	432,5	2,06	7,04	1,77	243,7	1,35	6,41
liquid temp	0	32	579,1	1978	498,4	2,27	7,75	1,95	255,2	1,39	7,44
Tliq= 55/131	7,2	45	745,0	2544	641,1	2,73	9,32	2,35	273,0	1,45	9,71

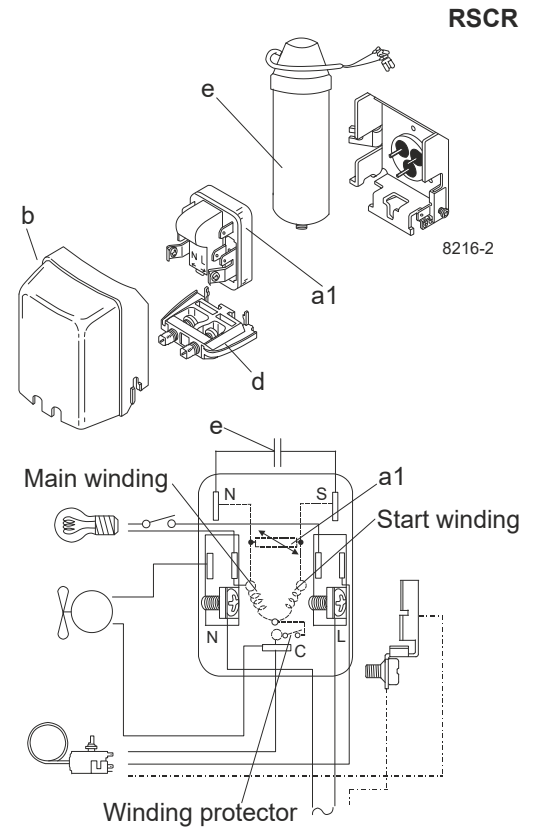
Model

Designation	DLE4.8CNT	220-240V/50Hz	Conf. 5	Sales code:	102H4587
-------------	------------------	----------------------	----------------	-------------	-----------------

Configuration

Motorconfiguration	RSCR	
Power supply (nominal)	220-240V/50Hz 1~	
Refrigerant	R290	
Application	LBP+MBP	
Voltage range	187-254V	
Starting torque	LST	
Approvals	UL	SA3693
	CCC	

Electrical accessories / wiring diagram

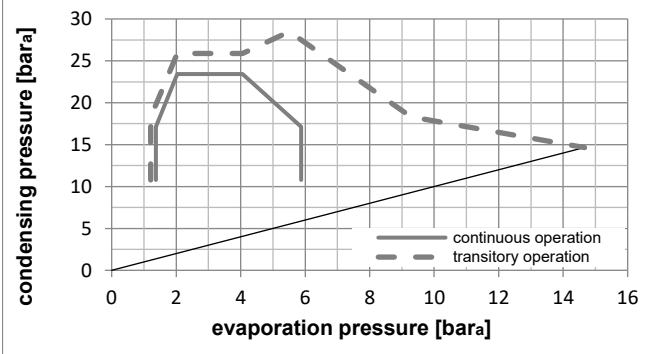
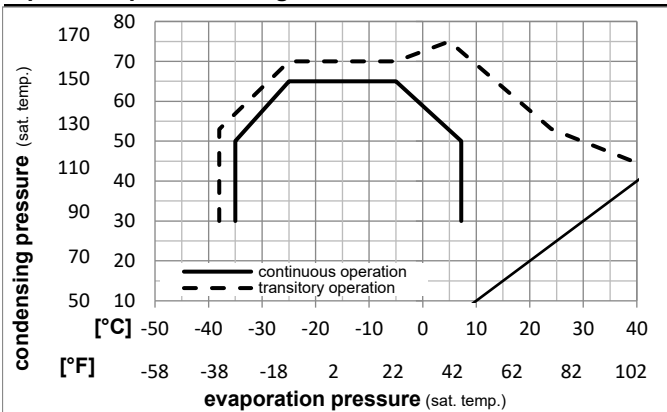


Ambient temperatures / system cooling

Ambient temperature min.:	10°C / 50°F
Ambient temperature max.:	43°C / 110°F

System cooling (n/a: outside limits)			
T ambient	LBP	MBP	HBP
32°C / 90°F	fan 3m/s	fan 3m/s	n/a
38°C / 100°F	fan 3m/s	fan 3m/s	n/a
43°C / 110°F	fan 3m/s	fan 3m/s	n/a

Operation pressure range



Components

a1	e-PTC starter (220V, 250hm, 4.8mm)	103N0050
e	run capacitor (5μF, 4.8mm)	117-7129
b	plastic cover	103N0491
d	cord relief	103N1010
	bracket for run capacitor	117-0300
	screw M4x8mm	117-0301

Model

Designation **DLE4.8CNT** **220-240V/50Hz** Conf. 5 Sales code: **102H4587**

Optimization + standard conditions

R290, 220V/50Hz, RSCR, fan 3m/s, UL, CCC

		Evaporating pressure (saturation temperature)				Condensing pressure (saturation temperature)					Power consumption						
		Return gas temp.			Liquid temp.		Cooling capacity			COP	EER	Current consumption		Ref. mass flow			
		pe	pc	RGT	Tliq	[W]	[Btu/h]	[kcal/h]	[W/W]	[Btu/Wh]	[kcal/Wh]	P1	I	m			
[°C]	[°F]	[°C]	[°F]	[°C]	[°C]							[W]	[A]	[kg/h]			
-23	-10	54	130	32	90	32	90	232,0	792	199,7	1,41	4,82	1,21	164,4	1,35	2,35	ASHRAE LBP
-25	-13	55	131	32	90	55	131	174,0	594	149,7	1,09	3,71	0,93	160,3	1,34	2,17	cecomaf LBP
-35	-31	40	104	20	68	40	104	132,5	453	114,0	1,06	3,61	0,91	125,3	1,26	1,51	EN12900 LBP
-7	20	54	130	35	95	46	115	417,8	1427	359,6	2,01	6,87	1,73	207,8	1,48	4,77	ASHRAE MBP
-10	14	55	131	32	90	55	131	330,6	1129	284,5	1,65	5,63	1,42	200,5	1,45	4,18	cecomaf MBP
-10	14	45	113	20	68	45	113	367,9	1257	316,7	1,99	6,79	1,71	185,1	1,40	4,52	EN12900 MBP

Performance tables

R290, 220V/50Hz, RSCR, fan 3m/s, UL, CCC

	pe		Cooling capacity			COP	EER	P1			I	m
	[°C]	[°F]	[W]	[Btu/h]	[kcal/h]	[W/W]	[Btu/Wh]	[kcal/Wh]	[W]	[A]	[kg/h]	
[°C / °F]	-35	-31	127,0	434	109,3	1,00	3,40	0,86	127,4	1,26	1,42	
cond. pressure	-23	-10	219,6	750	188,9	1,40	4,78	1,20	156,9	1,33	2,48	
pc= 45/113	-15	5	313,3	1070	269,6	1,79	6,10	1,54	175,3	1,37	3,56	
return gas temp.	-9	15	391,5	1337	336,9	2,10	7,18	1,81	186,1	1,40	4,48	
RGT= 32/90	-4	25	484,2	1654	416,7	2,48	8,46	2,13	195,5	1,43	5,58	
liquid temp	0	32	558,4	1907	480,6	2,78	9,48	2,39	201,2	1,45	6,48	
Tliq= 45/113	7,2	45	719,0	2455	618,8	3,43	11,71	2,95	209,7	1,49	8,45	
[°C / °F]	-35	-31	105,3	360	90,6	0,80	2,73	0,69	131,9	1,27	1,30	
cond. pressure	-23	-10	187,8	641	161,6	1,14	3,89	0,98	164,9	1,35	2,34	
pc= 55/131	-15	5	269,7	921	232,1	1,44	4,91	1,24	187,5	1,41	3,39	
return gas temp	-9	15	338,0	1154	290,9	1,67	5,72	1,44	201,9	1,46	4,28	
RGT= 32/90	-4	25	418,9	1431	360,5	1,94	6,64	1,67	215,5	1,50	5,35	
liquid temp	0	32	484,0	1653	416,5	2,15	7,36	1,85	224,6	1,54	6,22	
Tliq= 55/131	7,2	45	625,1	2135	538,0	2,60	8,89	2,24	240,2	1,61	8,14	